

Specialist building services range guide



Contents

MARLEY PVC SOIL & WASTE ● 4

Soil & Waste systems

Waste

Solvent waste PVC-c / PVCu	6-7
Solvent waste ABS	8
Push-fit waste polypropylene	9
PVCu vent and overflow system	10
Accessories	11

Soil

Push fit soil	12-14
Solvent soil	15-17
Rigid WC connectors, WC Manifolds, PVCu floor outlets & pipe support	18-19
Accessories	19-20

Plumbing

Traps	22-25
Compression waste/pipes & fittings	26
WC connectors/modern	27-28
WC connectors/old	29
WC connectors/stainless steel	30
Floor drainage/Linum/	31
Shower gullies	32
Spares and replacements	32-33

MARLEY HDPE ● 34

High performance soil & waste drainage	
Pipes & fittings	36-39
Accessories	40

DBLUE ● 42

Triple-layer acoustic drainage system	
Pipes & fittings	44-45

ACTIVE DRAINAGE VENTILATION ● 46

Active drainage ventilation	
P.A.P.A., Mini & Maxi-Vent	48-49

FRIAPHON ● 50

Sound attenuated drainage system	
Pipes & fittings	52-53
Accessories	54

HTA ● 56

System for hot & cold services	
Pipe & solvent weld fittings	58-61
Accessories	62-63

FLUXO® ● 64

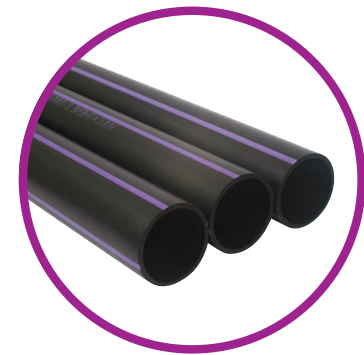
System for hot & cold services	
Pipes & coils	66
Brass fittings	66-67
PPSU fittings	68
Manifolds & screw caps	68
Clips & positioning rings	69
Aesthetic fitting covers	69
Tools	70-71

SUPERFLO ABS ● 72

System for chilled & cold water	
Metric pipe & solvent weld fittings	74-75
Metric accessories	76-77
Metric solvent valves	78
Imperial pipe & solvent weld fittings	79-86
Imperial valves & accessories	87-90

VULCATHENE ● 92

Chemical resistant laboratory drainage system	
Pipe, bench products & ancillaries	94-96
Mechanical fittings	97-99
Polyfusion/mechanical adaptors	99
Enfusion fittings	100-102



Contact us

Get in touch!

Visit: Aliaxis.co.uk/get-in-touch
Or call: +44 (0) 330 111 4233

Marley PVC Soil and Waste



Marley PVC Soil and Waste

Solvent waste PVC-c / PVCu



PIPE - 4m

Size	Colour	Qty	Part no.
32mm	W B G	10	KP104
40mm	W B G	10	KP204
50mm	W B G	5	KP304

Double spigot



STRAIGHT COUPLING

Size	Colour	Qty	Part no.
32mm	W B G	10	KSC1
40mm	W B G	10	KSC2
50mm	W B G	10	KSC3



STRAIGHT COUPLING - Expansion/ adaptor

Size	Colour	Qty	Part no.
32mm	W B G	10	KEC1
40mm	W B G	10	KEC2
50mm	W B G	10	KEC3



CLIP - Open PVCu

Size	Colour	Qty	Part no.
32mm	W B G	10	KF1
40mm	W B G	10	KF2
50mm	W B G	10	KF3



CLIP - Saddle ABS

Size	Colour	Qty	Part no.
32mm	W B G	10	WC3
40mm	W B G	10	WC4
50mm	W B G	80	WC5



BEND - 88½°

Size	Colour	Qty	Part no.
32mm	W B G	10	KB1
40mm	W B G	10	KB2
50mm	W B G	10	KB3



BEND - 45°

Size	Colour	Qty	Part no.
32mm	W B G	10	KB12
40mm	W B G	10	KB22
50mm	W B G	10	KB32



BEND - 45° Spigot

Size	Colour	Qty	Part no.
32mm	W B G	10	KBA12
40mm	W B G	10	KBA22
50mm	W B G	20	KBA32



KNUCKLE BEND - 90°

Size	Colour	Qty	Part no.
32mm	W B G	10	KBK15
40mm	W B G	20	KBK35*

*KBK35 is used as boss adaptor bend only



BEND - 87½°

Size	Colour	Qty	Part no.
32mm	W B G	20	KBS1
40mm	W B G	20	KBS2
50mm	W B G	20	KBS3

Long spigot



TEE - 88½°

Size	Colour	Qty	Part no.
32mm	W B G	10	KT1
40mm	W B G	10	KT2
50mm	W B G	10	KT3



TEE - 45°

Size	Colour	Qty	Part no.
32mm	W G	10	KT21
40mm	W G	10	KT31



CROSS TEE - 88½°

Size	Colour	Qty	Part no.
40mm	W G	10	KXT21
50mm	W G	10	KXT31



ACCESS PLUG

Size	Colour	Qty	Part no.
32mm	W B G	10	KAP1
40mm	W B G	10	KAP2
50mm	W B G	10	KAP3

Marley PVC Soil and Waste

Solvent waste PVC-c / PVCu



SOCKET REDUCER - 32-21.5

Size	Colour	Qty	Part no.
32-21.5mm	W B G	10	KR175



SOCKET REDUCER - 40-32

Size	Colour	Qty	Part no.
40-32mm	W B G	10	KR210



SOCKET REDUCER - 50-32

Size	Colour	Qty	Part no.
50-32mm	W G	10	KR310



SOCKET REDUCER - 50-40

Size	Colour	Qty	Part no.
50-40mm	W B G	10	KR320



IRON ADAPTOR - Female

Size	Colour	Qty	Part no.
32mm	W G	10	KFA1
40mm	W G	10	KFA2
50mm	W G	10	KFA3



IRON ADAPTOR - Male

Size	Colour	Qty	Part no.
32mm	W G	10	KMA1
40mm	W G	10	KMA2
50mm	W G	10	KMA3



PIPE - 3m

Size	Colour	Qty	Part no.
32mm	W B G	10	WAP33
40mm	W B G	10	WAP43
50mm	W B G	5	WAP53



STRAIGHT COUPLING

Size	Colour	Qty	Part no.
32mm	W B G	10	WAC3
40mm	W B G	10	WAC4
50mm	W B G	10	WAC5



STRAIGHT COUPLING - Expansion/ copper adaptor

Size	Colour	Qty	Part no.
32mm	W B	10	WAC31
40mm	W B	10	WAC41
50mm	W B	10	KEC3*



CLIP - Open PVCu

Size	Colour	Qty	Part no.
32mm	W B G	10	KF1
40mm	W B G	10	KF2
50mm	W B G	10	KF3



CLIP - Saddle ABS

Size	Colour	Qty	Part no.
32mm	W B G	10	WC3
40mm	W B G	10	WC4
50mm	W B G	10	WC5



BEND - 88½°

Size	Colour	Qty	Part no.
32mm	W B G	10	WAB3
40mm	W B G	10	WAB4
50mm	W B G	10	WAB5

Marley PVC Soil and Waste

Solvent waste ABS



BEND - 45°

Size	Colour	Qty	Part no.
32mm	W B G	10	WAB31
40mm	W B G	10	WAB41
50mm	W B G	10	WAB51



BEND - 45° Spigot

Size	Colour	Qty	Part no.
32mm	W B G	10	WAB32
40mm	W B G	10	WAB42



KNUCKLE BEND - 90°

Size	Colour	Qty	Part no.
32mm	W B G	10	WAB33
40mm	W B G	10	WAB43



BEND - 90° Spigot / socket

Size	Colour	Qty	Part no.
32mm	W B	50	WAB34
40mm	W B	30	WAB44
50mm	W B	20	WAB54



ACCESS PLUG

Size	Colour	Qty	Part no.
32mm	W B G	10	WAA3
40mm	W B G	10	WAA4
50mm	W B G	10	WAA5



TEE - 88½°

Size	Colour	Qty	Part no.
32mm	W B G	10	WAT3
40mm	W B G	10	WAT4
50mm	W B G	10	WAT5



TEE - 45°

Size	Colour	Qty	Part no.
32mm	W	10	WAT31
40mm	W	10	WAT41
50mm	W	10	WAT51



CROSS TEE - 88½°

Size	Colour	Qty	Part no.
40mm	W	10	WAT42
50mm	W	10	WAT52



SOCKET REDUCER

Size	Colour	Qty	Part no.
32mm	W B G	10	WAR43
40mm	W B G	10	WAR53
50mm	W B G	10	WAR54



IRON ADAPTOR - Female

Size	Colour	Qty	Part no.
32mm	W	10	WAF3
40mm	W	10	WAF4
50mm	W	10	WAF5



IRON ADAPTOR - Male

Size	Colour	Qty	Part no.
32mm	W	10	WAM3
40mm	W	10	WAM4
50mm	W	10	WAM5



CAP AND LINING

Size	Colour	Qty	Part no.
32mm	W	10	WAM31

Marley PVC Soil and Waste

Push-fit waste polypropylene



PIPE - 3m

Size	Colour	Qty	Part no.
32mm	W B G	10	WPP33
40mm	W B G	10	WPP43



STRAIGHT COUPLING

Size	Colour	Qty	Part no.
32mm	W B G	10	WPC3
40mm	W B G	10	WPC4



CLIPS - Open PVCu

Size	Colour	Qty	Part no.
32mm	W B G	10	KF1
40mm	W B G	10	KF2



CLIPS - Saddle ABS

Size	Colour	Qty	Part no.
32mm	W B G	10	WC3
40mm	W B G	10	WC4



BEND - 45°

Size	Colour	Qty	Part no.
32mm	W B G	10	WPB31
40mm	W B G	10	WPB41



BEND - 45° Spigot

Size	Colour	Qty	Part no.
32mm	W B G	10	WPB32
40mm	W B G	10	WPB42



KNUCKLE BEND - 90°

Size	Colour	Qty	Part no.
32mm	W B G	10	WPB33
40mm	W B G	10	WPB43



BEND - 87½° Swept, Socket/socket

Size	Colour	Qty	Part no.
32mm	W B G	10	WPB3
40mm	W B G	10	WPB4



BEND - 88½° spigot

Size	Colour	Qty	Part no.
32mm	W B G	10	WPB34
40mm	W B G	10	WPB44



TEE - 88½°

Size	Colour	Qty	Part no.
32mm	W B G	20	WPT31
40mm	W B G	30	WPT41



ACCESS PLUG

Size	Colour	Qty	Part no.
32mm	W B G	10	WPA31
40mm	W B G	10	WPA41



SOCKET REDUCER

Size	Colour	Qty	Part no.
40-32mm	W B G	10	WPR43



MULTI-FIT COMPONENT

Size	Colour	Qty	Part no.
32mm	G	10	WUM33
40mm	G	10	WUM34

Fit BS EN 1451, BS EN 1455 or BS EN 1566 pipe.
Straight tank connector

Marley PVC Soil and Waste

PVCu vent and overflow system



PIPE

Size	Colour	Qty	Part no.
3m			
21.5mm	W	30	OP213
3m			
21.5mm	W	30	OP21



STRAIGHT COUPLING

Size	Colour	Qty	Part no.
21.5mm	W	10	OSC21



CLIP - Saddle

Size	Colour	Qty	Part no.
21.5mm	W	10	OC21



BEND - 90°

Size	Colour	Qty	Part no.
21.5mm	W	10	OB90



BEND - 45°

Size	Colour	Qty	Part no.
21.5mm	W	10	OB45



TEE - 90°

Size	Colour	Qty	Part no.
21.5mm	W	10	OT90



ADAPTORS - Female iron - 3/4" BSP female thread

Size	Colour	Qty	Part no.
21.5mm	W	10	OFA21



ADAPTOR - Straight, to 22mm

Size	Colour	Qty	Part no.
21.5mm	W	10	OCA21



ADAPTOR - Cap and lining - 3/4" BSP female thread

Size	Colour	Qty	Part no.
21.5mm	W	10	OCL21



TANK CONNECTOR - Straight

Size	Colour	Qty	Part no.
21.5mm	W	10	OTC21



TANK CONNECTOR - Bent

Size	Colour	Qty	Part no.
21.5mm	W	10	OBC90

Including polyethylene washers and quick fix Acme threads

Marley PVC Soil and Waste

Accessories

Key to symbols and colours: W: White B: Black G: Grey AG: Anthracite Grey BR: Brown NU: Neutral V: Vandyke Brown
FF: Foundry Finish Kitemark certified product BBA certified product



SOLVENT CEMENT - 250ml

Size	Qty	Part no.
Tub 250ml	1	KS10



SOLVENT CEMENT - 500ml

Size	Qty	Part no.
Can 500ml	1	KS20



SILICONE LUBRICANT - 50g

Size	Qty	Part no.
Tube with sponge applicator 50g	1	SZ50



SILICONE LUBRICANT - 100g

Size	Qty	Part no.
100g bottle	1	SZ100

* an ozone friendly aerosol



SILICONE LUBRICANT - 400ml

Size	Qty	Part no.
Aerosol* 400ml	1	SZ400



SILICONE LUBRICANT - 500g

Size	Qty	Part no.
500g tub	1	SZ500

Water Research Centre Approved



SOLVENT CLEANER

Size	Qty	Part no.
Bottle 250ml	1	KC10

Marley PVC Soil and Waste

Push-fit soil



PIPE - 110mm co-ex soil

Size	Colour	Qty	Part no.
2.5m			
110mm	G	1	SP4025
3m			
82mm	B G	1	SP303
110mm	W B G	1	SP403
160mm	G	1	SP603
4m			
82mm	G	1	SP304
110mm	G	1	SP404
160mm	G	1	SP604
Push-fit socket			



STRAIGHT COUPLING - Loose pipe socket

Size	Colour	Qty	Part no.
82mm	B G	10	SE300
110mm	W B G	8	SE400
160mm	G	4	SE600



STRAIGHT COUPLING - Double ring seal slip coupling

Size	Colour	Qty	Part no.
82mm	B G	10	SE305
110mm	W B G	8	SE405
160mm	G	4	SE605



STRAIGHT COUPLING - Triple socket

Size	Colour	Qty	Part no.
110mm	G	4	SE402



SHORT RADIUS BEND - 87 1/2°

Size	Colour	Qty	Part no.
82mm	B G	20	SB31
110mm	W B G	4	SB41
160mm	G	1	SFB61

Push-fit socket/spigot



SHORT RADIUS BEND - 45°

Size	Colour	Qty	Part no.
82mm	B G	20	SB35
110mm	W B G	4	SB45
160mm	G	1	SFB65

Push-fit socket/spigot

SHORT RADIUS BEND

Size	Colour	Qty	Part no.
10°			
110mm	W B G	4	SB410
20°			
110mm	W B G	4	SB420
30°			
110mm	W B G	4	SB430

Push-fit socket/spigot



SHORT RADIUS BEND - 87 1/2°

Size	Colour	Qty	Part no.
110mm	B G	4	SB411

Double push-fit socket



ADJUSTABLE BEND - 11° - 87 1/2°

Size	Colour	Qty	Part no.
82mm	B G	10	SB37



ADJUSTABLE BEND - 5° - 14°

Size	Colour	Qty	Part no.
110mm	G	4	SB46



ADJUSTABLE BEND - 21° - 90°

Size	Colour	Qty	Part no.
110mm	B G	4	SB47



ADJUSTABLE BEND - 31° - 90°

Size	Colour	Qty	Part no.
160mm	G	2	SB67



OFFSET BEND - 67 1/2°

Size	Colour	Qty	Part no.
82mm	B G	30	SNE300
160mm	G	1	SNE600

Push-fit solvent socket



OFFSET BEND - 67 1/2°

Size	Colour	Qty	Part no.
110mm	W B G	4	SNE405

Push-fit solvent socket



EQUAL BRANCH - 87 1/2°

Size	Colour	Qty	Part no.
110mm	W B G	4	SY401
160mm	G	2	SY601



EQUAL BRANCH - 45°

Size	Colour	Qty	Part no.
82mm	G	10	SY36
110	B G	4	SY460
160mm	G	2	SY63

Push-fit sockets/spigot



EQUAL BRANCH - 45°

Size	Colour	Qty	Part no.
110mm	B G	4	SY466

Push-fit sockets/spigot



FIVE BOSS BRANCH - 87 1/2° spigot

Size	Colour	Qty	Part no.
110mm	W B G	4	SY405

Push-fit sockets/spigot



FIVE BOSS BRANCH - 87 1/2° solvent socket

Size	Colour	Qty	Part no.
110mm	B G	4	SY415

Push-fit sockets/solvent socket



THREE BOSS BRANCH - 87 1/2°

Size	Colour	Qty	Part no.
82mm	B G	10	SY33F

To BS 4514 and / or BS EN 1329 'B' as appropriate



UNEQUAL BRANCH - 87 1/2°

Size	Colour	Qty	Part no.
160x110 mm	G	2	SY64

Push-fit sockets/spigot. 2 boss/access upstands



UNEQUAL BRANCH - 45 1/2°

Size	Colour	Qty	Part no.
160x110mm	G	1	SY66

Push-fit sockets/spigot



DOUBLE BRANCH - 87 1/2°

Size	Colour	Qty	Part no.
110mm	B G	4	SY404

Push-fit sockets/spigot. 4 boss upstands



CORNER BRANCH - 87 1/2°

Size	Colour	Qty	Part no.
110mm	G	1	SY411

Push-fit sockets/spigot



BOSS PIPE - 87 1/2°

Size	Colour	Qty	Part no.
82mm	B G	15	SW30

Push-fit socket/spigot. 3 boss upstands, 1 drilled



BOSS PIPE - 87 1/2°

Size	Colour	Qty	Part no.
110mm	W B G	4	SW41

Push-fit socket/spigot. One 40mm boss connection



BOSS PIPE - 87 1/2°

Size	Colour	Qty	Part no.
110mm	B G	4	SW415

Push-fit socket/spigot. One 32mm boss connection



BOSS PIPE

Size	Colour	Qty	Part no.
110mm	W B G	4	SW40

Push-fit socket/spigot. 4 boss upstands



ACCESS PIPE - Solvent socket

Size	Colour	Qty	Part no.
82mm	B G	15	SF31



ACCESS PIPE - Socket/spigot

Size	Colour	Qty	Part no.
110mm	W B G	4	SF4 1



REAR ACCESS BEND - 87 1/2°

Size	Colour	Qty	Part no.
82mm	B G	1	SB38



REAR ACCESS BEND - 87 1/2° Push-fit socket/spigot

Size	Colour	Qty	Part no.
110mm	B G	4	SB42

Marley PVC Soil and Waste

Push-fit soil



REAR ACCESS BRANCH - 87½°

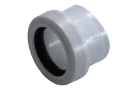
Size	Colour	Qty	Part no.
82mm	B G	1	SY34F



REAR ACCESS BRANCH

Size	Colour	Qty	Part no.
110mm	B G	4	SY402

2 boss upstands



BOSS CONNECTOR - 87½°

Size	Colour	Qty	Part no.
32mm	W B G	50	SA411
40mm	W B G	40	SA421
50mm	B G	40	SA420

Solvent weld with push-fit seal



LEVEL INVERT REDUCER

Size	Colour	Qty	Part no.
110x82mm	B G	20	SRM304
160x110mm	G	4	SRM604

Spigot/socket



ADAPTOR - Soil to drain

Size	Colour	Qty	Part no.
110mm	B	1	SA42



ADAPTOR - Waste to drain

Size	Colour	Qty	Part no.
110mm	B	1	SA110



PIPE - 110mm co-ex soil

Size	Colour	Qty	Part no.
3m			
110mm	W B G	1	SL403
160mm	G	1	SL603
4m			
110mm	G	1	SP404
160mm	G	1	SP604

Double socket



STRAIGHT COUPLING - Loose pipe socket

Size	Colour	Qty	Part no.
82mm	B G	10	SE300
110mm	W B G	8	SE400
160mm	G	4	SE600

Double solvent socket



STRAIGHT COUPLING - Double solvent socket

Size	Colour	Qty	Part no.
82mm	G	50	SES301
110mm	B G	8	SES401
160mm	G	4	SES601



EXPANSION COUPLING

Size	Colour	Qty	Part no.
110mm	B G	8	SE409
110mm	Clear	8	SE409CLR

To accommodate thermal movement in both vertical and horizontal solvent pipework



SHORT RADIUS BENDS - 87½° Solvent socket/spigot

Size	Colour	Qty	Part no.
110mm	W B G	4	SBS41



SHORT RADIUS BENDS - 87½°

Size	Colour	Qty	Part no.
110mm	W B G	4	SBS42



SHORT RADIUS BENDS - 87½°

Size	Colour	Qty	Part no.
160mm	G	2	SBS62

Marley PVC Soil and Waste

Solvent soil



SHORT RADIUS BENDS - 45°

Size	Colour	Qty	Part no.
110mm	W B G	4	SBS45



SHORT RADIUS BENDS - 45° Double socket/spigot

Size	Colour	Qty	Part no.
160mm	G	2	SBS65



SHORT RADIUS BENDS - 45°

Size	Colour	Qty	Part no.
110mm	B G	4	SBS415

SHORT RADIUS BENDS - 67½°

Size	Colour	Qty	Part no.
160mm	G	2	SBS615

Solvent socket/spigot



LONG SPIGOT BEND - 87½°

Size	Colour	Qty	Part no.
110mm	W B G	4	SBS40

Solvent socket/spigot



OFFSET BEND - 67½°

Size	Colour	Qty	Part no.
82mm	B G	30	SNE300
160mm	G	1	SNE600

Push-fit solvent socket



OFFSET BEND - 67½°

Size	Colour	Qty	Part no.
110mm	W B G	4	SNE405

Push-fit solvent socket



EQUAL BRANCH - 87½°

Size	Colour	Qty	Part no.
160mm	G	2	SYS601

Triple solvent socket



EQUAL BRANCH - 45°

Size	Colour	Qty	Part no.
110mm	B G	4	SYS460

Solvent sockets/spigot



EQUAL BRANCH - 45°

Size	Colour	Qty	Part no.
110mm	B G	4	SYS466
160mm	G	4	SYS666

Triple solvent sockets



FIVE BOSS BRANCH - 87½° Triple solvent sockets

Size	Colour	Qty	Part no.
110mm	B G	4	SYS405

Push-fit solvent socket



FIVE BOSS BRANCH - 87½° Solvent socket/spigot

Size	Colour	Qty	Part no.
110mm	B G	4	SY415



UNEQUAL BRANCH - 87½°

Size	Colour	Qty	Part no.
160x110mm	G	4	SYS664

All solvent sockets. Three 50mm boss upstands



UNEQUAL BRANCH - 45°

Size	Colour	Qty	Part no.
160x110mm	G	4	SYS644



DOUBLE BRANCH - 87½°

Size	Colour	Qty	Part no.
110mm	G	1	SYS404

All solvent sockets, 4 boss upstands



CORNER BRANCH

Size	Colour	Qty	Part no.
110mm	G	1	SYS411

All solvent sockets



BOSS PIPE - 45°

Size	Colour	Qty	Part no.
110mm	G	4	SWS4135

All solvent sockets. Three 50mm boss upstands

Marley PVC Soil and Waste

Solvent soil



BOSS PIPES - 87½° 32mm boss connection

Size	Colour	Qty	Part no.
110mm	W B G	4	SWS415

Double solvent socket. One 32mm boss connection



BOSS PIPES - 87½° 40mm boss connection

Size	Colour	Qty	Part no.
110mm	W B G	4	SWS41

Double solvent socket. One 40mm boss connection



BOSS PIPE

Size	Colour	Qty	Part no.
110mm	B G	4	SWS42

Double solvent socket. One 50mm boss connection



STRAP-ON BOSS - 90°

Size	Colour	Qty	Part no.
110 / 32mm	B G	40	SWS4150
110 / 40mm	B G	40	SWS410
110 / 50mm	B G	30	SWS420



CONDENSATE STRAP-ON BOSS - 90°

Size	Colour	Qty	Part no.
110 / 21.5mm	G	50	SWS4C



PATCH BOSS

Size	Colour	Qty	Part no.
32mm			
82mm	G	40	SWS332
40mm			
82mm	G	40	SWS340
50mm			
82mm	G	30	SWS350



8-WAY COLLAR BOSS - Solvent socket/spigot

Size	Colour	Qty	Part no.
110mm	G	1	SCB41



8-WAY COLLAR BOSS - Double solvent socket tail

Size	Colour	Qty	Part no.
110mm	G	1	SCBS41



8-WAY COLLAR BOSS - Solvent socket/spigot with 350mm spigot tail

Size	Colour	Qty	Part no.
110mm	G	1	SCBL41



BOSS PIPE

Size	Colour	Qty	Part no.
110mm	B G	4	SWS40



BOSS PIPE - Solvent socket/spigot

Size	Colour	Qty	Part no.
110mm	B G	4	SWS405

4 boss upstands, 1 drilled



BOSS PIPE

Size	Colour	Qty	Part no.
110mm	G	1	SWS406



BOSS PIPE - Double solvent socket

Size	Colour	Qty	Part no.
160mm	G	4	SWS60

4 boss upstands, 1 drilled



BOSS PIPE - Solvent socket/spigot

Size	Colour	Qty	Part no.
160mm	G	1	SW60



CONDENSATION TRAP

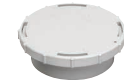
Size	Colour	Qty	Part no.
110mm	G	6	SCT4

With 21.5/22mm overflow connection



SOCKET PLUG

Size	Colour	Qty	Part no.
110mm	W B G	35	SE43



ACCESS CAP

Size	Colour	Qty	Part no.
82	B G	30	SE30
110	W B G	50	SE40
160	G	15	SE62

With pressure plug



ACCESS PIPE - Double solvent socket

Size	Colour	Qty	Part no.
110	W B G	4	SFS41

3 boss upstands



ACCESS PIPE - Double solvent socket

Size	Colour	Qty	Part no.
160	G	2	SF611



REAR ACCESS BEND - 87½°

Size	Colour	Qty	Part no.
110	B G	4	SBS420

Double solvent socket



BOSS CONNECTOR - 87½° Solvent weld with push-fit seal

Size	Colour	Qty	Part no.
32	W B G	50	SA411
40	W B G	40	SA421
50	B G	40	SA420



BOSS CONNECTOR - 87½° Solvent weld with solvent weld joint

Size	Colour	Qty	Part no.
32	G	40	SA415
40	B G	40	SA425
50	G	50	SA435



BOSS CONNECTOR - 87½° Solvent weld

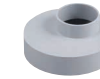
Size	Colour	Qty	Part no.
40	W B	20	KBK25
50	W B	10	KBK35



ECCENTRIC REDUCER - 82-50

Size	Colour	Qty	Part no.
82-50	B G	90	SRM30

Solvent socket to boss upstand



ECCENTRIC REDUCER - 110-50

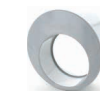
Size	Colour	Qty	Part no.
110-50	B G	10	SRM402

Solvent socket to boss upstand



ECCENTRIC REDUCER - 110-50

Size	Colour	Qty	Part no.
110-82	G	6	SRS304



ECCENTRIC REDUCER - 160-110

Size	Colour	Qty	Part no.
160-110	G	6	SRS604

Key to symbols and colours: W: White B: Black G: Grey AG: Anthracite Grey BR: Brown NU: Neutral V: Vandyke Brown
FF: Foundry Finish Kitemark certified product BBA certified product

Marley PVC Soil and Waste

Rigid WC connectors and manifold components



STRAIGHT CONNECTOR - 14° Spigot

Size	Colour	Qty	Part no.
110mm	W	1	SG40



STRAIGHT CONNECTOR - 14° Solvent socket

Size	Colour	Qty	Part no.
110mm	W	1	SGS41W*

Pan socket to be trimmed to suit WC spigot



BENT CONNECTOR - 90° Solvent socket

Size	Colour	Qty	Part no.
110mm	W	4	ST40



BENT CONNECTOR - 90° Long spigot

Size	Colour	Qty	Part no.
110mm	W	4	ST41W



BENT CONNECTORS - 85° Solvent socket

Size	Colour	Qty	Part no.
110mm	W	4	STS41W*

Pan socket to be trimmed to suit WC spigot



BENT CONNECTORS - 90° Long spigot/solvent socket

Size	Colour	Qty	Part no.
110mm	W	4	SBS40W



WC SEAL AND CAP

Size	Colour	Qty	Part no.
83 - 114mm outlet	W	70	SA323W

For use with SGS41 and STS41

Universal push-fit WC connectors



STRAIGHT CONNECTOR

Size	Colour	Qty	Part no.
100mm	W	24	SWC11



STRAIGHT CONNECTOR - 14°

Size	Colour	Qty	Part no.
100mm	W	20	SWCB14



STRAIGHT CONNECTOR - 22°

Size	Colour	Qty	Part no.
100mm	W	24	SWC22



LONG BENT CONNECTOR - 90°

Size	Colour	Qty	Part no.
100mm	W	10	SWCB90



EXTENSION PIECE

Size	Colour	Qty	Part no.
100mm	W	12	SWCE33

*When fitted to short WC pan spigots, pan socket should be trimmed to suit before SA323W (not supplied) is fitted. Push-fit WC connectors are manufactured to BS 5627

Marley PVC Soil and Waste

Rigid WC connectors and manifold components



EXTENSION PIPE

Size	Colour	Qty	Part no.
110x90mm	W	50	SM45W

300mm. For use with SM43 only



BRANCH

Size	Colour	Qty	Part no.
110x90mm	W	10	SM41W

Solvent sockets



ADJUSTABLE WC BEND - 50° - 90°

Size	Colour	Qty	Part no.
90mm	W	15	SM42W*

50mm boss upstand. Pan socket to be trimmed to suit WC spigot



ADJUSTABLE SPIGOT BEND - 50° - 90°

Size	Colour	Qty	Part no.
90mm	W	15	SM43W

50mm boss upstand



WC CONNECTOR

Size	Colour	Qty	Part no.
90mm	W	30	SM44W*

Solvent socket. Pan socket to be trimmed to suit WC spigot

*When fitted to short WC pan spigots, pan socket should be trimmed to suit before SA323W (not supplied) is fitted. Push-fit WC connectors are manufactured to BS 5627

Key to symbols and colours: W: White B: Black G: Grey AG: Anthracite Grey BR: Brown NU: Neutral V: Vandyke Brown
FF: Foundry Finish Kitemark certified product BBA certified product

Accessories



SOCKET CLIP

Size	Colour	Qty	Part no.
110	B G	50	SC41
160	G	50	SC61

PVC coated mild steel including nut and bolt



BARREL CLIP COLLAR

Size	Colour	Qty	Part no.
1000	G	25	SC621

Converts socket clip to pipe clip



PIPE CLIP

Size	Colour	Qty	Part no.
82	B G	20	SC35
110	W B G	50	SC45

PVCu



PIPE CLIP

Size	Colour	Qty	Part no.
82	B G	20	SC35S

For use with drive-in spike or backplate



DRIVE-IN-SPIKE

Colour	Qty	Part no.
G	200	RSS1

Galvanised mild steel



BACKPLATE

Colour	Qty	Part no.
W B G	100	RCB300



CONCENTRIC REDUCER

Size	Colour	Qty	Part no.
110-50	B G	18	SE41

Spigot to boss upstand



DURGO AIR ADMITTANCE VALVE

Size	Colour	Qty	Part no.
50	W	32	SVD2*
82	G	18	SVD3*
110	G	18	SVD4

Durgo valve including polystyrene insulating hood

*Can be fitted below flood level

BBA certified for use up to 10 storeys

Marley PVC Soil and Waste

Accessories



ROOF COWL/VENT TERMINAL

Size	Colour	Qty	Part no.
110	W B G	10	SVCT



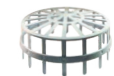
VENT TERMINAL

Size	Colour	Qty	Part no.
50	W B G	30	RV225



VENT TERMINAL

Size	Colour	Qty	Part no.
82	B G	30	SV321
110	W B G	60	SV42



VENT TERMINAL

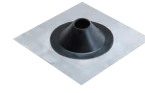
Size	Colour	Qty	Part no.
160	G	20	SV62



WEATHERING COLLAR

Size	Colour	Qty	Part no.
82	B	100	SV31*
110	W B G	30	SV43

PVCu for solvent joint to pipe.
*Available in black rubber only.



WEATHERING SLATES - Flat

Size	Colour	Qty	Part no.
400	G	5	SAS40



WEATHERING SLATES - Inclined

Size	Colour	Qty	Part no.
400	G	5	SAS45
610	G	5	SAS61



SPARE RING SEALS - 'T' ring

Size	Qty	Part no.
82	5	SR82T
110	5	SR110T
160	5	SR160T

To BS EN 681/1



TRAPPED FLOOR GULLIES

Size	Colour	Qty	Part no.
50mm	G	8	SFG42AS

Solvent outlet. 90mm adjustable water seal

Size	Colour	Qty	Part no.
82mm	G	8	SFG43AS

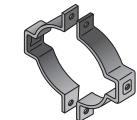
Solvent outlet. 75mm adjustable water seal



STAINLESS STEEL TILE GRATE AND COVER

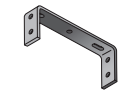
Size	Colour	Qty	Part no.
150x150mm	NU	1	SGG4

Grade 304 stainless steel



TWO PIECE PIPE BRACKET

Size	Colour	Qty	Part no.
110mm	NU	1	JB42
160mm	NU	1	JB62



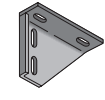
DOUBLE SUPPORT BASE PLATE

Size	Colour	Qty	Part no.
110mm	NU	1	JBP42
160mm	NU	1	JBP62



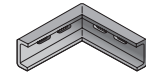
CHANNEL STRIP

Size	Colour	Qty	Part no.
2m	NU	1	JCS2



SINGLE SUPPORT BASE PLATE

Colour	Qty	Part no.
NU	1	JDP1



CHANNEL STRIP ANGLE

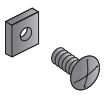
Colour	Qty	Part no.
NU	1	JCA1



BARREL CLIP COLLAR

Colour	Qty	Part no.
G	1	SC621

1m PVC strip when cut to length converts pipe bracket to pipe size



NUTS AND BOLTS

Size	Colour	Qty	Part no.
20mm x 6mm	NU	10	RNB11

To BS EN 1519 as appropriate

Active Drainage Ventilation

Controlling the movement of air within a drainage system by attenuating and balancing positive and negative pressures.

ADV provides an alternative to traditional secondary venting, saving on material costs and installation times and minimising the number of required roof penetrations.

Turn to page 48 for more information.



Multikwik

Traps



BOTTLE – Standard

Size	Pack	Box	Part no.
32mm	10	50	B032
40mm	10	40	B040



BOTTLE – Resealing

Size	Pack	Box	Part no.
32mm	10	50	B032R
40mm	10	40	B040R

Resealing function to prevent loss of water seal



BOTTLE – Adjustable

Size	Pack	Box	Part no.
32mm	10	40	B032A
40mm	10	40	B040A

Adjustable inlet for installation flexibility
Min height: 195mm; max height: 300mm



BOTTLE – Adjustable/Resealing

Size	Pack	Box	Part no.
32mm	5	40	B032RA
40mm	5	30	B040RA

Resealing function to prevent loss of water seal
Adjustable inlet for installation flexibility
Min height: 195mm; max height: 300mm



BOTTLE – Anti-vac

Size	Pack	Box	Part no.
32mm	10	50	B032V
40mm	10	50	B040V

Resealing function to prevent loss of water seal
Anti-vac allows air to be drawn in to prevent self-syphonage of the water trap seal and gurgling



BOTTLE – Compact

Size	Pack	Box	Part no.
32mm	5	65	B032S
40mm	5	50	B040S

Use when connecting into flat bottomed appliances that discharge into a gully



BOTTLE – Slimline

Size	Pack	Box	Part no.
32mm	5	40	BS032

Space saving
Adjustable inlet for installation flexibility
Min height: 195mm; max height: 300mm



STRAIGHT THROUGH ADJUSTABLE

Size	Pack	Box	Part no.
32mm	10	40	ST032

Unique slimline design, saving space
Adjustable telescopic outlet for installation flexibility
Easy to clean and maintain



BOTTLE – Adjustable

Size	Pack	Box	Part no.
32mm	1	20	B032ACR

High quality mirror chrome finish
Includes 400mm x 32mm chromed pipe
Adjustable inlet for installation flexibility
Min height: 195mm; max height: 300mm



BOTTLE – Adjustable/Resealing

Size	Pack	Box	Part no.
32mm	1	40	B032RACR
40mm	1	40	B040RACR

High quality mirror chrome finish
Adjustable inlet for installation flexibility
Min height: 195mm; max height: 300mm
Resealing function to prevent loss of water seal



UNIVERSAL ALL IN ONE

Size	Pack	Box	Part no.
32mm	10	40	SP032

Adjustable inlet for installation flexibility
Multi position outlet adjusts 360° providing installation flexibility
Use as either an 'S' or 'P' trap



RUNNING

Size	Pack	Box	Part no.
32mm	5	50	RP032
40mm	5	35	RP040
50mm	5	40	RP050X

Use to trap a range of appliances

Multikwik

Traps



'P' TRAP

Size	Pack	Box	Part no.
32mm	10	60	P032
40mm	10	40	P040
50mm	5	50	P050

Use for horizontal pipework



'P' TRAP ADJUSTABLE

Size	Pack	Box	Part no.
32mm	10	50	P032A
40mm	10	40	P040A

Adjustable inlet for installation flexibility
Min height: 220mm; max height: 270mm



'S' TRAP

Size	Pack	Box	Part no.
40mm	10	60	S032
50mm	10	40	S040



TUBULAR SWIVEL TRAP

Size	Pack	Box	Part no.
40mm	5	40	SWM040A

Adjustable inlet for installation flexibility
Inlet and outlet swivel to aid easy connection, even in confined areas



SHOWER COMPACT

Size	Pack	Box	Part no.
40mm	10	40	S5040C

Chrome waste
70mm flange
High flow rate: 0.76 l/s



SHOWER COMPACT

Size	Pack	Box	Part no.
40mm	10	40	S5040W

Key to symbols and colours:

Resealing
 Adjustable
 Seal Depth
 Chrome
 Stainless Steel
 White
 BBA certified product



SHALLOW SHOWER TRAP

Size	Pack	Box	Part no.
40mm	1	10	S5040CD

70mm flange



SHALLOW SHOWER TRAP

Size	Pack	Box	Part no.
40mm	1	20	S9040CD

115mm flange



BATH – One piece

Size	Pack	Box	Part no.
40mm	10	80	P1940

For ground floor appliances which discharge into a gully



BATH – Low level

Size	Pack	Box	Part no.
40mm	10	40	P5040

Rodding point for cleaning



BATH – Low level

Size	Pack	Box	Part no.
40mm	5	80	P5040V

Rodding point for cleaning
Anti-vac allows air into the waste pipe to prevent self-syphonage of the water trap seal and gurgling

Multikwik

Traps



BATH – Swivel 'P' low level

Size	Pack	Box	Part no.
40mm	5	40	P040L



BATH – Swivel 'P' low level

Size	Pack	Box	Part no.
40mm	5	35	P6040

Rodding point for cleaning



BATH – Low level

Size	Pack	Box	Part no.
40mm	1	20	P5040F

Flexible overflow pipe for ease of installation

Plug tidy overflow to retain plug when not in use



BATH – Standard

Size	Pack	Box	Part no.
40mm	5	40	P6040F

Flexible overflow pipe for ease of installation

Plug tidy overflow to retain plug when not in use



ANTI-VAC GURGLE MASTER

Size	Pack	Box	Part no.
32mm	10	150	WV032
40mm	10	100	WV040

Anti-vac allows air into the waste pipe to prevent self-syphonage of the water trap seal and gurgling
Quick installation with simple multifit-in-line assembly
Install within 150mm of the trap



ANTI SYPHON UNIT

Size	Pack	Box	Part no.
32mm	10	250	WW150
40mm	10	250	WW151

Anti-vac allows air into the waste pipe to prevent self-syphonage of the water trap seal and gurgling
Use with any BS EN 1566/5255 solvent weld sockets
To BS EN 12380



WASHING MACHINE

Size	Pack	Box	Part no.
40mm	5	30	PWM040

Includes 500mm standpipe, retaining clips, screws and raw plugs



UTILITY 'P' COMPACT – Single nozzle

Size	Pack	Box	Part no.
40mm	10	60	PWM040T

Nozzle for connecting a washing machine or dishwasher



ADJUSTABLE UTILITY 'P' – Single nozzle

Size	Pack	Box	Part no.
40mm	10	30	PWM040S

Adjustable inlet for installation flexibility
For connecting a washing machine or dishwasher
Non-return valve to prevent backflow in nozzle
Min height: 250mm; max height: 310mm



ADJUSTABLE UTILITY 'P' – Double nozzle

Size	Pack	Box	Part no.
40mm	10	40	PWM040D

Adjustable inlet for installation flexibility
Non-return valve to prevent backflow in nozzle
Min height: 250mm; max height: 310mm
For connecting two appliances



ADJUSTABLE UTILITY 'S' – Single nozzle

Size	Pack	Box	Part no.
40mm	10	30	SWM040S

Adjustable inlet for installation flexibility
Non-return valve to prevent backflow in nozzle
Min height: 250mm; max height: 310mm
For connecting a washing machine or dishwasher



ADJUSTABLE UTILITY 'S' – Double nozzle

Size	Pack	Box	Part no.
40mm	10	25	SWM040D

Adjustable inlet for installation flexibility
Non-return valve to prevent backflow in nozzle
Min height: 250mm; max height: 330mm
For connecting two appliances



SPACE SAVER KIT

Size	Pack	Box	Part no.
40mm	1	25	SBK040D

Single bowl, double nozzle
Flexible installation with full width and height adjustment

Multikwik

Traps



1½ BOWL KIT – Single nozzle

Size	Pack	Box	Part no.
40mm	1	35	XSB040S

Flexible installation with full width and height adjustment



DOUBLE BOWL KIT – Single nozzle

Size	Pack	Box	Part no.
40mm	1	30	DBK040S

Flexible installation with full width and height adjustment



EXTENDED DOUBLE BOWL KIT – double nozzle

Size	Pack	Box	Part no.
40mm	1	25	DBKDS040

Flexible installation with full width and height adjustment



TRAP HEIGHT ADJUSTER – Single nozzle

Size	Pack	Box	Part no.
40mm	5	90	WA040S

Non-return valve prevents backflow in nozzle
For connecting a washing machine or dishwasher



SPACE SAVER

Size	Pack	Box	Part no.
40mm	5	30	SBSK040

Trap not included
Space saving design: Pushes the trap and pipework to the back of the cupboard



NOZZLE - Angled

Size	Pack	Box	Part no.
40mm	10	300	NK001

Non-return valve to prevent backflow in nozzle
Nozzle can be cut to suit a variety of applications
To suit 1" & ¾" hose diameter



NOZZLE – Straight

Size	Pack	Box	Part no.
40mm	10	300	NKT001

Use with 40mm compression waste appliance hose connection



WASHING MACHINE TEE

Size	Pack	Box	Part no.
40mm	1	100	WMT001

1½ BSP sink waste connection
Can be inserted between an existing trap and outlet



FLEXIBLE CONNECTOR

Size	Pack	Box	Part no.
40/32mm	1	1	WW170

350mm length. Cut ends to suit compression fittings



WASHING MACHINE – HOSE 1.5M

Size	Pack	Box	Part no.
40mm	1	1	WW171

Non kink hose with rest support for reliable installation



BASIC SINK WASTE AND OVERFLOW STANDARD KIT

Size	Pack	Box	Part no.
40mm	1	20	CWS01

Extendible overflow to suit various overflow heights
Flexible overflow pipe



BATH WASTE AND OVERFLOW STANDARD KIT

Size	Pack	Box	Part no.
40mm	1	20	CWB01

Extendible overflow to suit various overflow heights
Flexible overflow pipe



BATH WASTE AND OVERFLOW KIT

Size	Pack	Box	Part no.
40mm	5	40	W040F

Extendible overflow to suit various overflow heights
Flexible overflow pipe
Plug tidy overflow to retain the plug when not in use



BATH WASTE AND OVERFLOW KIT

Size	Pack	Box	Part no.
40mm	1	5	WPU040C

Extendible overflow to suit various overflow heights
Flexible overflow pipe, includes pop up waste



BATH WASTE AND OVERFLOW KIT

Size	Pack	Box	Part no.
40mm	5	40	W4070RF

Extendible overflow to suit various overflow heights
Flexible overflow pipe



SLOTTED BASIN WASTE OUTLET

Size	Pack	Box	Part no.
32mm	1	40	SBW01

Includes polyplug, chain and stay
Slotted – for basins with an integral overflow

Multikwik

Compression Waste / Pipes & Fittings



OVERFLOW CONDENSE ADAPTOR

Size	Pack	Box	Part no.
40mm	1	400	EB40R

Adapts to condense pipework
Connects 40mm to 16.5 – 24mm



MULTIFLEX BEND

Size	Pack	Box	Part no.
32mm	1	50	MFW32
40mm	1	50	MFW40

Adjustable from 0 – 90° to meet the demands of almost any installation



REDUCER

Size	Pack	Box	Part no.
40/32mm	1	200	WP124
50/40mm	1	130	WP225



STRAIGHT COUPLING

Size	Pack	Box	Part no.
32mm	1	280	WP114
40mm	1	220	WP115
50mm	1	90	WP216



90° BEND

Size	Pack	Box	Part no.
32mm	1	200	WP120
40mm	1	150	WP121
50mm	1	112	WP222



135° BEND

Size	Pack	Box	Part no.
32mm	1	230	WP126
40mm	1	180	WP127
50mm	1	70	WP218



92.5° TEE

Size	Pack	Box	Part no.
32mm	1	120	WP128
40mm	1	80	WP129
50mm	1	80	WP230



PIPE – Chrome

Size	Pack	Box	Part no.
400mm			
40mm	1	10	WP101C
50mm	1	10	WP102C
1.1m			
40mm	1	10	WP105C
50mm	1	10	WP106C

High quality mirror chrome finish



STRAIGHT COUPLING – Chrome

Size	Pack	Box	Part no.
32mm	1	100	WP114C
40mm	1	80	WP115C

High quality mirror chrome finish



PIPE CLIP – Chrome

Size	Pack	Box	Part no.
32mm	3	250	WP141C
40mm	3	250	WP142C

Price is for a pack of 3

High quality mirror chrome finish



90° BEND – Chrome

Size	Pack	Box	Part no.
32mm	1	100	WP120C
40mm	1	80	WP121C

High quality mirror chrome finish



92.5° TEE – Chrome

Size	Pack	Box	Part no.
40mm	1	40	WP129C

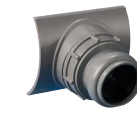
High quality mirror chrome finish



PIPE COVER – Chrome

Size	Pack	Box	Part no.
32mm	1	200	WP153C
40mm	1	200	WP154C

High quality mirror chrome finish



EASY BOSS CONNECTOR – 32/40mm

Size	Pack	Box	Part no.
Grey			
110mm	1	30	MKEB4032G
Black			
110mm	1	30	MKEB4032B

For connection (push fit or solvent weld) to 110mm soil stacks

Multikwik

WC Connectors / Modern



STRAIGHT

Size	Pack	Box	Part no.
------	------	-----	----------

WC spigot outer diameter: 97–108mm
Soil pipe inner diameter: 99–105mm

This connector is for new style pans only



EXTENDED STRAIGHT

Size	Pack	Box	Part no.
------	------	-----	----------

WC spigot outer diameter: 97–108mm
Soil pipe inner diameter: 99–105mm



LONG ADJUSTABLE STRAIGHT

Size	Pack	Box	Part no.
------	------	-----	----------

WC spigot outer diameter: 97–108mm
Soil pipe inner diameter: 99–105mm

This connector is for new style pans only



STRAIGHT – Including vent boss

Size	Pack	Box	Part no.
------	------	-----	----------

WC spigot outer diameter: 97–108mm
Soil pipe inner diameter: 99–105mm

40mm boss



18MM OFFSET

Size	Pack	Box	Part no.
------	------	-----	----------

WC spigot outer diameter: 97–108mm
Soil pipe inner diameter: 99–105mm



40MM OFFSET

Size	Pack	Box	Part no.
------	------	-----	----------

WC spigot outer diameter: 97–108mm
Soil pipe inner diameter: 99–105mm

Key to symbols and colours:

Resealing Audstjuasbtlaeble Seal Depth Chrome Stainless Steel White BBA certified product



MULTICLIK – Flexible straight

Size	Pack	Box	Part no.
------	------	-----	----------

WC spigot outer diameter: 97–108mm
Soil pipe inner diameter: 99–105mm

Extends from 255 to 550mm
Ideal when installing back to the wall, floor standing pans



MULTICLIK 90° BEND

Size	Pack	Box	Part no.
------	------	-----	----------

WC spigot outer diameter: 97–108mm
Soil pipe inner diameter: 99–105mm

Extends from 375 to 710mm
Converts a 'P' trap into an 'S' trap with adjustment for final connection



MULTICLIK 90° BEND - Including vent boss

Size	Pack	Box	Part no.
------	------	-----	----------

WC spigot outer diameter: 97–108mm
Soil pipe inner diameter: 99–105mm

Extends from 405 to 740mm
Converts a 'P' trap into an 'S' trap with adjustment for final connection
Must be used in a vertical position if venting boss is being used



14° BEND

Size	Pack	Box	Part no.
------	------	-----	----------

WC spigot outer diameter: 97–108mm
Soil pipe inner diameter: 99–105mm



45° BEND

Size	Pack	Box	Part no.
------	------	-----	----------

WC spigot outer diameter: 97–108mm
Soil pipe inner diameter: 99–105mm

Ideal for corner installations



104° BEND

Size	Pack	Box	Part no.
------	------	-----	----------

WC spigot outer diameter: 97–108mm
Soil pipe inner diameter: 99–105mm



90° BEND

Size	Pack	Box	Part no.
------	------	-----	----------

WC spigot outer diameter: 97–108mm
Soil pipe inner diameter: 99–105mm

Multikwik

WC Connectors / Modern / Cast iron



90° BEND – Including vent boss

Size	Pack	Box	Part no.
WC spigot outer diameter: 97–108mm Soil pipe inner diameter: 99–105mm	1	15	MKBB2190

40mm venting boss
Must be used in a vertical position if venting boss is being used



90° BEND – Tall

Size	Pack	Box	Part no.
WC spigot outer diameter: 97–108mm Soil pipe inner diameter: 99–105mm	3	15	MKB3190

Includes 40mm compression venting boss
Must be used in a vertical position if venting boss is being used



90° BEND – Including vent boss

Size	Pack	Box	Part no.
WC spigot outer diameter: 97–108mm Soil pipe inner diameter: 99–105mm	1	10	MKBB3190

Includes 40mm compression venting boss
Must be used in a vertical position if venting boss is being used



90° SPACE SAVER BEND

Size	Pack	Box	Part no.
WC spigot outer diameter: 97–108mm Soil pipe inner diameter: 99–105mm	1	12	MKBAR90

Can be cut to suit both horizontally and vertically
Ideal when replacing old BS1213 'S' trap pans



RIGID 18MM OFFSET

Size	Pack	Box	Part no.
WC spigot outer diameter: 97–108mm Soil pipe inner diameter: 99–105mm	1	30	MKRO2

WC spigot outer diameter: 97–108mm
Soil pipe inner diameter: 99–105mm



RIGID 14° BEND

Size	Pack	Box	Part no.
WC spigot outer diameter: 97–108mm Soil pipe inner diameter: 99–105mm	1	30	MKRB14

WC spigot outer diameter: 97–108mm
Soil pipe inner diameter: 99–105mm



RIGID 90° BEND

Size	Pack	Box	Part no.
WC spigot outer diameter: 97–108mm Soil pipe inner diameter: 99–105mm	1	15	MKRB90

Adjustable length: remove finned seal with a fine tooth saw and cut



RIGID STRAIGHT

Size	Pack	Box	Part no.
WC spigot outer diameter: 97–108mm Soil pipe inner diameter: 99–105mm	1	30	MKRS2

WC spigot outer diameter: 97–108mm
Soil pipe inner diameter: 99–105mm



EXTENDED STRAIGHT – For 3½" soil

Size	Pack	Box	Part no.
WC spigot outer diameter: 97–108mm Soil pipe inner diameter: 88–92mm	1	20	MKS7

Extension length: 15mm



18MM OFFSET – For 3½" soil

Size	Pack	Box	Part no.
WC spigot outer diameter: 97–108mm Soil pipe inner diameter: 88–92mm	1	30	MK07

WC spigot outer diameter: 97–108mm
Soil pipe inner diameter: 88–92mm



14° BEND – For oversize soil

Size	Pack	Box	Part no.
WC spigot outer diameter: 97–108mm Soil pipe inner diameter: 105–108mm	1	30	MKB114S

WC spigot outer diameter: 97–108mm
Soil pipe inner diameter: 105–108mm



STRAIGHT

Size	Pack	Box	Part no.
WC spigot outer diameter: 108–114mm Soil pipe inner diameter: 99–105mm	5	30	MKS1

WC spigot outer diameter: 108–114mm
Soil pipe inner diameter: 99–105mm

This connector is for old style pans only



STRAIGHT – Old BS1213 syphonic pan

Size	Pack	Box	Part no.
WC spigot outer diameter: 108–114mm Soil pipe inner diameter: 99–105mm	1	30	MKS1

WC spigot outer diameter: 108–114mm
Soil pipe inner diameter: 99–105mm



18MM OFFSET – Old BS1213 pan

Size	Pack	Box	Part no.
WC spigot outer diameter: 108–114mm Soil pipe inner diameter: 99–105mm	5	30	MK01

WC spigot outer diameter: 108–114mm
Soil pipe inner diameter: 99–105mm



90° TIGHT KNUCKLE BEND – Old BS1213 pan

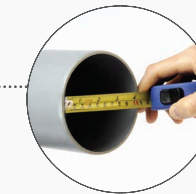
Size	Pack	Box	Part no.
WC spigot outer diameter: 108–114mm Soil pipe inner diameter: 99–105mm	1	20	MKB21

WC spigot outer diameter: 108–114mm
Soil pipe inner diameter: 99–105mm

TRUST MULTIKWIK

Selecting the right WC CONNECTOR:

Measure the INNER diameter of your pipe

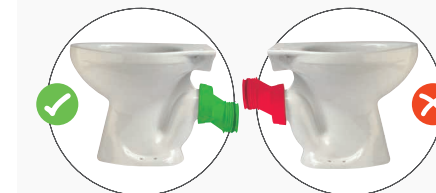


Measure the OUTER diameter of your spigot

Then take a look at the dimensions provided for the individual connectors to find the best matches!

Selecting the right OFFSET:

Measure from the centre line of your pipe to the centre line of your WC spigot.



Remember, offsets should not be installed in an upwards position. Water should be able to run horizontally or down.

Key to symbols and colours:

Resealing Audstjuasbtlaeble Seal Depth Chrome Stainless Steel White BBA certified product



90° BEND – Old BS1213 pan

Size	Pack	Box	Part no.
WC spigot outer diameter: 108–114mm Soil pipe inner diameter: 99–105mm	1	15	MKB22

WC spigot outer diameter: 108–114mm
Soil pipe inner diameter: 99–105mm



STRAIGHT – For 3½" soil

Size	Pack	Box	Part no.
WC spigot outer diameter: 108–114mm Soil pipe inner diameter: 88–92mm	1	30	MKS3

WC spigot outer diameter: 108–114mm
Soil pipe inner diameter: 88–92mm



18MM OFFSET

Size	Pack	Box	Part no.
WC spigot outer diameter: 108–114mm Soil pipe inner diameter: 88–92mm	1	30	MK03

WC spigot outer diameter: 108–114mm
Soil pipe inner diameter: 88–92mm

Suitable old BS1213 pans to 3½" soil



STRAIGHT – For 3½" soil

Size	Pack	Box	Part no.
WC spigot outer diameter: 108–114mm Soil pipe inner diameter: 74–77mm	1	20	MKS10

WC spigot outer diameter: 108–114mm
Soil pipe inner diameter: 74–77mm



90° TIGHT KNUCKLE BEND

Size	Pack	Box	Part no.
WC spigot outer diameter: 108–114mm Soil pipe inner diameter: 105–108mm	1	20	MKB21S

WC spigot outer diameter: 108–114mm
Soil pipe inner diameter: 105–108mm

Multikwik

WC Connectors / Stainless Steel



STRAIGHT – Undersize spigot

Size	Pack	Box	Part no.
------	------	-----	----------

WC spigot outer diameter: 76–95mm
Soil pipe inner diameter: 99–105mm



EXTENDED STRAIGHT – Undersize spigot

Size	Pack	Box	Part no.
------	------	-----	----------

WC spigot outer diameter: 76–95mm
Soil pipe inner diameter: 99–105mm

Extension length: 59mm



18MM OFFSET – Undersize spigot

Size	Pack	Box	Part no.
------	------	-----	----------

WC spigot outer diameter: 76–95mm
Soil pipe inner diameter: 99–105mm



14° BEND – Undersize spigot

Size	Pack	Box	Part no.
------	------	-----	----------

WC spigot outer diameter: 76–95mm
Soil pipe inner diameter: 99–105mm



14° BEND – Undersize spigots to 3½" soil

Size	Pack	Box	Part no.
------	------	-----	----------

WC spigot outer diameter: 76–95mm
Soil pipe inner diameter: 88–92mm



SOIL PIPE EXTENSION – For 4" soil

Size	Pack	Box	Part no.
------	------	-----	----------

Soil pipe inner diameter: 99–105mm

Can be cut to required length

Ideal for replacing 4" cast iron, clay and PVCu



SOIL PIPE EXTENSION – For 3½" soil

Size	Pack	Box	Part no.
------	------	-----	----------

Soil pipe inner diameter: 88–92mm

Can be cut to required length

Ideal for replacing 3½" cast iron



SOIL PIPE EXTENSION – For 3" soil

Size	Pack	Box	Part no.
------	------	-----	----------

Soil pipe inner diameter: 74–77mm

Can be cut to required length

Ideal for replacing 3" cast iron



RIGID SOIL PIPE EXTENSION

Size	Pack	Box	Part no.
------	------	-----	----------

WC spigot outer diameter: 97–108mm
Soil pipe inner diameter: 99–105mm

Adjustable length: remove finned seal and cut with a fine tooth saw



FLUSH PIPE CONNECTOR

Size	Pack	Box	Part no.
------	------	-----	----------

n/a



MULTILINK

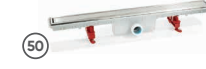
Size	Pack	Box	Part no.
------	------	-----	----------

n/a

For connecting 2 or more pan connectors

Multikwik

Floor drainage / Linum / Shower gullies



LINNUM – Shower drain body

Size	Box	Part no.
------	-----	----------

650mm
750mm
950mm

Water seal depth: 50mm

Min. height: 115mm; Max. height: 131mm

For tiled flooring



LINNUM – Soft floor grate

Size	Box	Part no.
------	-----	----------

650mm
750mm
950mm



LINNUM – Elegance floor grate

Size	Box	Part no.
------	-----	----------

650mm
950mm



LINNUM – Bubble floor grate

Size	Box	Part no.
------	-----	----------

950mm



LINNUM – Shower grid frame – spare

Size	Box	Part no.
------	-----	----------

950mm

Stainless steel



LINNUM – Shower clamping frame – Spare

Size	Box	Part no.
------	-----	----------

950mm

For use with floor thickness spacer (TRL478)



SHOWER GULLY – Horizontal/steel

Size	Pack	Part no.
------	------	----------

50mm seal depth
50mm
75mm seal depth
50mm

Vinyl flooring



SHOWER GULLY – Vertical/steel

Size	Pack	Part no.
------	------	----------

50mm seal depth
50mm
75mm seal depth
50mm

Vinyl flooring



SHOWER GULLY – Horizontal ABS

Size	Pack	Part no.
------	------	----------

50mm seal depth
50mm
75mm seal depth
50mm

Vinyl flooring



SHOWER GULLY – Vertical ABS

Size	Pack	Part no.
------	------	----------

50mm seal depth
50mm
75mm seal depth
50mm

Vinyl flooring

Key to symbols and colours:
 Resealing Audstjuasbtlaebl Seal Depth Chrome Stainless Steel White BBA certified product

Multikwik

Shower gullies



SHOWER GULLY – Vertical

Size	Pack	Part no.
50mm seal depth		
50mm	1	SG50VT
75mm seal depth		
50mm	1	SG75VT

Requires 'Grate and Riser' set
Tiled flooring



SHOWER GULLY – Horizontal

Size	Pack	Part no.
50mm seal depth		
50mm	1	SG50HT
75mm seal depth		
50mm	1	SG75HT

Requires 'Grate and Riser' set
Tiled flooring



DUAL GRATE & RISER

Size	Box	Part no.
n/a	1	SG1T

Riser can be cut between 36.5-130mm
Requires shower gully body
Tiled flooring



SQUARE GRATE & RISER

Size	Box	Part no.
n/a	1	SG2T

Riser can be cut between 36.5-130mm
Requires shower gully body
Tiled flooring



CLASSIC GRATE & RISER

Size	Box	Part no.
n/a	1	SG3T

Riser can be cut between 36.5-130mm
Requires shower gully body
Tiled flooring

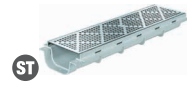


CLASSIC VANDAL RESISTANT GRATE & RISER

Size	Box	Part no.
n/a	1	SG4T

Riser can be cut between 36.5-130mm
Requires shower gully body
Screwed anti-vandal grate
Tiled flooring

Continuous channel



CONTINUOUS CHANNEL

Size	Box	Part no.
500mm	1	L29142

For tiled flooring only



40/50MM HORIZONTAL OUTLET

Size	Box	Part no.
150mm	1	L29158

40/50mm horizontal outlet

Spares and replacements



FLOOR THICKNESS SPACER – Spare

Size	Box	Part no.
n/a	1	TRL478

Pack of 12
For use with Linnum shower clamping
Accommodates three different heights



OUTLET ADAPTOR

Size	Pack	Part no.
Linnum		
40mm	1	TRL487
50mm	1	TRL490
Continuous channel		
40mm	1	TRL489
50mm	1	TRL488

To BSEN1566/5255 solvent waste

Multikwik

Spares and replacements



MULTIFLUSH VALVE – 340mm Cable

Size	Box	Part no.
1½" BSP	10	MFV1C
2" BSP	10	MFV3C

Dual flush button
Includes MFVB7B chrome dual flush button



MULTIFLUSH VALVE – 800mm Cable

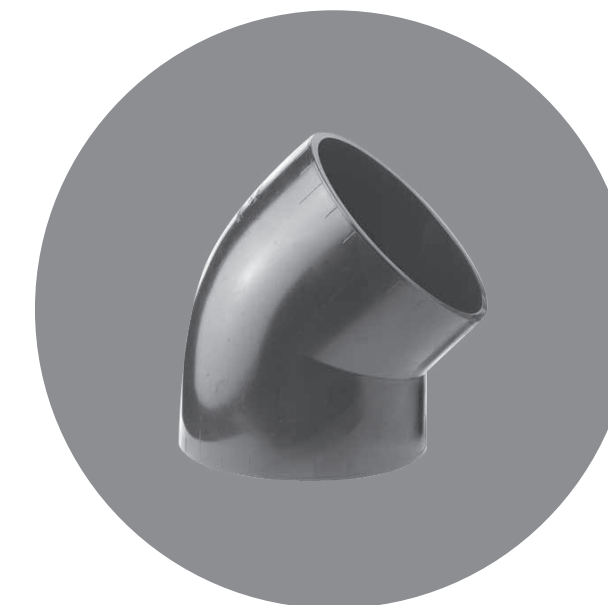
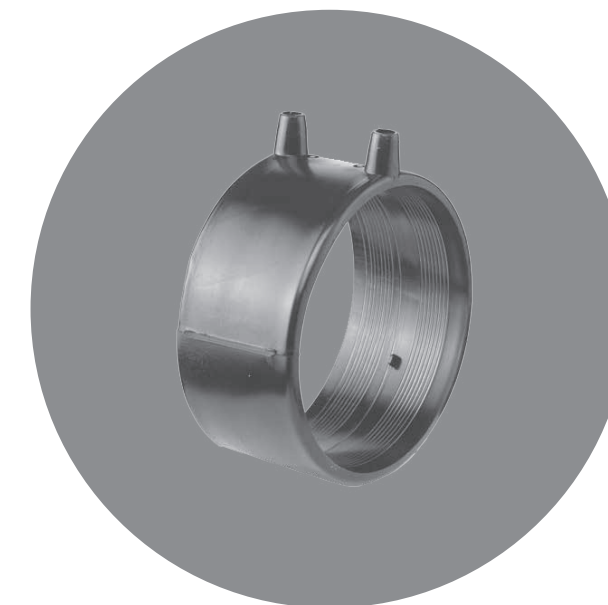
Size	Box	Part no.
1½" BSP	10	MFV2C
2" BSP	10	MFV4C

Dual flush button
Includes MFVB7B chrome dual flush button

Key to symbols and colours:

Reseating
 Audstjuasbtlaeble
 Seal Depth
 Chrome
 Stainless Steel
 White
 BBA certified product

Marley HDPE Drainage



Marley HDPE

Pipes & fittings



PIPE

Size	Colour	Qty	Part no.
3m			
110mm	B	144	S 10 11 03
5m			
56mm	B	745*	S 10 56 00
75mm	B	405*	S 10 07 00
110mm	B	375*	S 10 11 00
160mm	B	195*	S 10 16 00
200mm	B	100*	S 10 20 00
250mm	B	60*	S 10 25 00
315mm	B	50*	S 10 31 00

* Pack quantity in m per crate



ELECTROFUSION COUPLER

Size	Colour	Qty	Part no.
56mm	B	20	S 41 56 95
75mm	B	20	S 41 07 95
110mm	B	20	S 41 11 95
160mm	B	5	S 41 16 95
200mm	B	1	S 41 20 65
250mm	B	1	S 41 25 65
315mm	B	1	S 41 31 65



EXPANSION SOCKET

Size	Colour	Qty	Part no.
56mm	B	20	S 40 56 20
75mm	B	20	S 42 07 20
110mm	B	20	S 42 11 20
160mm	B	5	S 42 16 20
200mm **	B	1	S 40 20 20
250mm **	B	1	S 40 25 20
315mm **	B	1	S 40 31 20

**Butt weld only, also excludes protection plug



PLUG-IN SOCKET

Size	Colour	Qty	Part no.
56/32mm	B	20	S 42 32 50
56/40mm	B	30	S 42 40 50
56mm	B	20	S 42 56 50
75mm	B	20	S 42 07 50
110mm	B	20	S 42 11 50
160mm *	B	10	S 42 16 50

Includes protection plug
* Butt-weld only



SOLVENT WELD PVC REDUCER

Size	Colour	Qty	Part no.
56/32mm	B	20	KR310H
56/40mm	B	20	KR320H

Reducer pushes inside S 42 56 50



INSPECTION SCREW

Size	Colour	Qty	Part no.
56mm	B	20	S 66 56 40
75mm	B	20	S 66 07 40
110mm	B	10	S 66 11 40
110mm	B	20	S 66 11 20*

* Short



BEND - 90°

Size	Colour	Qty	Part no.
160mm	B	10	S 11 16 91
200mm	B	10	S 11 20 91
250mm	B	1	S 11 25 91
315mm	B	1	S 11 31 91

Butt-weld only



BEND - 90°

Size	Colour	Qty	Part no.
56mm	B	20	S 11 56 92
75mm	B	25	S 11 07 92
110mm	B	25	S 11 11 96

Electrofusible at one side



BEND - 15°

Size	Colour	Qty	Part no.
110mm	B	1	S 18 11 15
160mm	B	1	S 18 16 15
200mm	B	1	S 18 20 15
250mm	B	1	S 18 25 15
315mm	B	1	S 18 31 15

Fabricated



BEND - 30°

Size	Colour	Qty	Part no.
110mm	B	1	S 18 11 30
160mm	B	1	S 18 16 30
200mm	B	1	S 18 20 30
250mm	B	1	S 18 25 30
315mm	B	1	S 18 31 30

Fabricated



ELBOW - 88½°

Size	Colour	Qty	Part no.
56mm	B	20	S 12 56 88
75mm	B	20	S 12 07 88
110mm	B	20	S 12 11 88
160mm	B	10	S 12 16 88
200mm	B	1	S 12 20 88*
250mm	B	1	S 12 25 88*
315mm	B	1	S 12 31 88*

*Fabricated

Marley HDPE

Pipes & fittings



ELBOW - 45°

Size	Colour	Qty	Part no.
56mm	B	20	S 12 56 45
75mm	B	20	S 12 07 45
110mm	B	20	S 12 11 45
160mm	B	5	S 12 16 45
200mm	B	5	S 12 20 45
250mm	B	5	S 12 25 45
315mm	B	5	S 12 31 45



ELBOW - 45°

Size	Colour	Qty	Part no.
75mm	B	20	S 12 07 46
110mm	B	20	S 12 11 46

Long spigot



BRANCH - 45°

Size	Colour	Qty	Part no.
110/110mm	B	10	S 36 11 11



Y-BRANCH - 45°

Size	Colour	Qty	Part no.
56/56mm	B	20	S 30 56 56
75/56mm	B	20	S 30 07 56
75/75mm	B	20	S 30 07 07
110/56mm	B	10	S 30 11 56
110/75mm	B	10	S 30 11 07
110/110mm	B	15	S 30 11 11
160/56mm *	B	5	S 30 16 56
160/75mm	B	5	S 30 16 07
160/110mm	B	5	S 30 16 11
160/160mm	B	5	S 30 16 16
200/75mm	B	1	S 30 20 07
200/110mm	B	1	S 30 20 11
200/160mm	B	1	S 30 20 16
200/200mm	B	1	S 30 20 20
250/110mm *	B	1	S 30 25 11
250/160mm *	B	1	S 30 25 16
250/200mm *	B	1	S 30 25 20
250/250mm *	B	1	S 30 25 25
315/110mm *	B	1	S 30 31 11
315/160mm *	B	1	S 30 31 16
315/200mm *	B	1	S 30 31 20
315/250mm *	B	1	S 30 31 25
315/315mm *	B	1	S 30 31 31

* Fabricated



Y-BRANCH - 60°

Size	Colour	Qty	Part no.
110/110mm	B	5	S 37 11 11



BRANCH - 88½° Swept entry

Size	Colour	Qty	Part no.
110/110mm	B	15	S 25 11 11



BRANCH - 88½°

Size	Colour	Qty	Part no.
56/56mm	B	20	S 20 56 56
75/56mm	B	20	S 20 07 56
75/75mm	B	20	S 20 07 07
110/56mm	B	10	S 20 11 56
110/75mm	B	10	S 20 11 07
110/110mm	B	15	S 20 11 11
160/56mm *	B	5	S 20 16 56
160/75mm*	B	5	S 20 16 07
160/110mm*	B	5	S 20 16 11
160/160mm*	B	5	S 20 16 16
200/75mm*	B	1	S 20 20 07
200/110mm*	B	1	S 20 20 11
200/160mm*	B	1	S 20 20 16
200/200mm*	B	1	S 20 20 20
250/110mm*	B	1	S 20 25 11
250/160mm*	B	1	S 20 25 16
250/200mm*	B	1	S 20 25 20
250/250mm*	B	1	S 20 25 25
315/110mm*	B	1	S 20 31 11
315/160mm*	B	1	S 20 31 16
315/200mm*	B	1	S 20 31 20
315/250mm*	B	1	S 20 31 25
315/315mm*	B	1	S 20 31 31

* Fabricated

Equal branches for rainwater applications only



CLEAN OUT BRANCH - 45°

Size	Colour	Qty	Part no.
110/110mm	B	1	S 33 11 00
160/110mm	B	1	S 33 16 00



CLEAN OUT BRANCH - 90°

Size	Colour	Qty	Part no.
56/56mm	B	1	S 23 56 00
75/75mm	B	1	S 23 07 00
110/110mm	B	1	S 23 11 20
160/110mm	B	1	S 23 16 20
200/110mm	B	1	S 23 20 00
250/110mm	B	1	S 23 25 00
315/110mm	B	1	S 23 31 00



DOUBLE BALL BRANCH 88½° - Fabricated - 90°

Size	Colour	Qty	Part no.
110/56mm	B	1	S 24 11 15
110/75mm	B	1	S 24 11 17
110/110mm	B	1	S 24 11 01

Marley HDPE

Pipes & fittings



DOUBLE BALL BRANCH 88½° - Fabricated – 135°

Size	Colour	Qty	Part no.
110/56mm	B	1	S 24 11 25
110/75mm	B	1	S 24 11 27
110/110mm	B	1	S 24 11 02



DOUBLE BALL BRANCH 88½° - Fabricated – 180°

Size	Colour	Qty	Part no.
110/56mm	B	1	S 24 11 35
110/75mm	B	1	S 24 11 37
110/110mm	B	1	S 24 11 03



TRIPLE BALL BRANCH 88½° - 90°

Size	Colour	Qty	Part no.
110/56mm	B	1	S 34 11 15
110/75mm	B	1	S 34 11 17
110/110mm	B	1	S 34 11 01

Fabricated



TRIPLE BALL BRANCH 88½° - 135°

Size	Colour	Qty	Part no.
110/56mm	B	1	S 34 11 25
110/75mm	B	1	S 34 11 27
110/110mm	B	1	S 34 11 02

Fabricated



FOUR WAY BALL BRANCH 88½° - Fabricated – 90°

Size	Colour	Qty	Part no.
110/56mm	B	1	S 44 11 15
110/75mm	B	1	S 44 11 17
110/110mm	B	1	S 44 11 01



FOUR WAY RISER

Size	Colour	Qty	Part no.
110/4x56mm	B	1	S 46 11 11



FOUR WAY SOIL MANIFOLD 135°

Size	Colour	Qty	Part no.
110/56mm		1	S 44 11 56



AERATOR

Size	Colour	Qty	Part no.
110mm	B	1	S 60 11 17
160mm	B	1	S 60 16 17

Butt-weld only



END CAP – Flat

Size	Colour	Qty	Part no.
56mm	B	20	S 67 56 07
75mm	B	20	S 67 07 07
110mm	B	20	S 67 11 07

Butt-weld only



END CAP – Dome

Size	Colour	Qty	Part no.
160mm	B	1	S 67 16 09
200mm	B	1	S 67 20 09
250mm	B	1	S 67 25 09
315mm	B	1	S 67 31 09

Butt-weld only



56MM BOSS ADAPTER

Size	Colour	Qty	Part no.
32mm	45	1	S 00 56 32
40mm	55	1	S 00 56 40



REDUCER ECCENTRIC – Long

Size	Colour	Qty	Part no.
200/110mm	B	1	S 14 20 11*
200/160mm	B	1	S 14 20 16**
250/200mm	B	1	S 14 25 20**
315/200mm	B	1	S 14 31 20*
315/250mm	B	1	S 14 31 25**

* type A ** type B

Please refer to the HDPE brochure for further details.



REDUCER ECCENTRIC – Short

Size	Colour	Qty	Part no.
75/56mm	B	20	S 16 07 56
110/40mm	B	10	S 16 11 04
110/56mm	B	10	S 16 11 56
110/75mm	B	20	S 16 11 07
160/110mm	B	5	S 16 16 11



CONTRACTION SLEEVE

Size	Colour	Qty	Part no.
50/70mm	B	5	S 55 05 03
56/75mm	B	5	S 55 56 01
75/90mm	B	5	S 55 07 01
110/125mm	B	5	S 55 11 02

Marley HDPE

Pipes & fittings



REDUCER CONCENTRIC

Size	Colour	Qty	Part no.
75/56mm	B	20	S 15 07 56
110/40mm	B	20	S 15 11 04
110/56mm	B	20	S 15 11 56
110/75mm	B	20	S 15 11 07
160/110mm	B	1	S 15 16 11
200/160mm * B		20	S 15 20 16
250/160mm * B		20	S 15 25 16
250/200mm * B		20	S 15 25 20
315/200mm * B		20	S 15 31 20
315/250mm * B		20	S 15 31 25

* Butt-weld only



STUB FLANGE

Size	Colour	Qty	Part no.
56mm *	B	5	S 47 56 02
75mm *	B	5	S 47 07 02
110mm	B	5	S 47 11 02
160mm	B	1	S 47 16 02
200mm *	B	1	S 47 20 02
250mm *	B	1	S 47 25 02
315mm *	B	1	S 47 31 02

* Butt-weld only



WALL-LAVATORY BEND 90°

Size	Colour	Qty	Part no.
110/90mm	B	10	S 50 11 85

Includes protection plug



WALL-LAVATORY BEND 90° - Horizontal Left

Size	Colour	Qty	Part no.
110/90mm	B	5	S 50 10 32
110/110mm*	B	5	S 50 11 32

Includes protection plug *NBR o-ring



WALL-LAVATORY BEND 90° - Horizontal Right

Size	Colour	Qty	Part no.
110/90mm	B	5	S 50 10 33
110/110mm *	B	5	S 50 11 33

Includes protection plug *NBR o-ring



DOUBLE WALL-LAVATORY BEND 90° - Vertical

Size	Colour	Qty	Part no.
110/110mm	B	5	S 50 11 34

With protection plug NBR o-ring



DOUBLE WALL-LAVATORY BEND 90° - Horizontal

Size	Colour	Qty	Part no.
110/90mm	B	1	S 50 09 35
110/110mm	B	1	S 50 11 35

With protection plug NBR o-ring



WALL-CONNECTOR SOCKET

Size	Colour	Qty	Part no.
90/90mm	B	10	S 50 09 51
110/110mm	B	10	S 50 11 71

Butt-weld only



ANCHOR BRACKET

Size	Colour	Qty	Part no.
56mm x ½"		1	S 70 56 78
75mm x ½"		1	S 70 07 78
110mm x ½"		1	S 70 11 78
160mm x ½"		1	S 70 16 78
200mm x 1"		1	S 70 20 80
250mm x 1"		1	S 70 25 80
315mm x 1"		1	S 70 31 80



GUIDE BRACKET

Size	Colour	Qty	Part no.
56mm x M10		1	S 70 56 10
75mm x M10		1	S 70 07 10
110mm x M10		1	S 70 11 10
160mm x M10		1	S 70 16 10



CLAMP LINER

Size	Colour	Qty	Part no.
56mm		1	S 70 56 15
75mm		1	S 70 07 15
90mm		1	S 70 09 15
110mm		1	S 70 11 15
160mm		1	S 70 16 15
200mm		1	S 70 20 15

Marley HDPE

Accessories



MOUNTING PLATE

Size	Colour	Qty	Part no.
1/2**		1	S 70 94 78
1**		1	S 70 94 80
M10**		1	S 70 94 10

* For anchor bracket
** For guide bracket



MANUAL PIPE SCRAPER

Qty	Part no.
1	S 41 96 00



SPIDER SCRAPER

Qty	Part no.
1	S 40 09 10
Replacement blades	S 49 11 10



PIPE CUTTER

Size	Colour	Qty	Part no.
40 - 63mm		1	S 40 09 10
110 - 160mm		1	S 49 11 10



WELDING PLATE CLEANING WIPE

Qty	Part no.
1	S 60 10 00



GREASE PENCIL

Qty	Part no.
1	S 41 96 20



PROTECTION FOR PLUG-IN SOCKET

Size	Colour	Qty	Part no.
56mm		1	S 40 56 19
75mm		1	S 40 07 19
110mm		1	S 40 11 28
160mm		1	S 40 16 19
200mm		1	S 40 20 19



PROTECTION CAP FOR PIPE END

Size	Colour	Qty	Part no.
56mm		1	S 40 56 29
75mm		1	S 40 07 29
110mm		1	S 40 11 29
160mm		1	S 40 16 29



Need to find a stockist?

We have a tool for that!

alixis.co.uk/stockist-finder



dBlue



dBlue

Accoustic drainage



PIPE WITH SOCKET - 3m

Size	Colour	Qty	Part no.
110mm	BL	10	PPA-110-034-300-D
160mm	BL	28	PPA-160-049-300-D



SHORT PIPE SOCKET

Size	Colour	Qty	Part no.
110mm	BL	6	VDK-110-000-00D



SLIP COUPLING

Size	Colour	Qty	Part no.
110mm	BL	6	VMP-110-000-00D
160mm	BL	6	VMP-160-000-00D



DOUBLE SOCKET COUPLING

Size	Colour	Qty	Part no.
110mm	BL	6	VMD-110-000-00D
160mm	BL	6	VMD-160-000-00D

EXPANSION COUPLING

Size	Colour	Qty	Part no.
110mm	BL	8	SE409BL



SHORT RADIUS BEND

Size	Colour	Qty	Part no.
15°			
110mm	BL	8	VKL-110-000-15D
30°			
110mm	BL	8	VKL-110-000-30D
45°			
110mm	BL	14	VKL-110-000-45D
160mm	BL	6	VKL-160-000-45D
67½°			
110mm	BL	4	VKL-110-000-67D
90°			
110mm	BL	14	VKL-110-000-90D
160mm	BL	4	VKL-160-000-90D



PHONOKLIP® BRACKET-ANCHOR/GUIDE

Size	Colour	Qty	Part no.
110mm	B	10	POB-PHO-110-000
160mm	B	10	POB-PHO-160-000



BRACKET -ANCHOR/GUIDE

Size	Colour	Qty	Part no.
110mm	BL	1	POB-STL-110-000
160mm	BL	1	POB-STL-160-000

Rubber lined



BACKPLATE

Size	Colour	Qty	Part no.
M8		10	BPTM8
M10		10	BPTM10

Includes thread.
BZP – recommended for internal use only.



EQUAL BRANCH

Size	Colour	Qty	Part no.
45°			
110/110mm	BL	7	VTR-110-110-45D
160/110mm	BL	3	VTR-160-110-45D
160/160mm	BL	2	VTR-160-160-45D
67½°			
110/110mm	BL	8	VTR-110-110-67D



ECCENTRIC REDUCER

Size	Colour	Qty	Part no.
160/110mm	BL	15	VRD-160-110-00D



SOCKET PLUG

Size	Colour	Qty	Part no.
M8		10	BPTM8
M10		10	BPTM10



SOCKET PLUG HOLDER

Size	Qty	Part no.
110mm	1	VCPL-KIE-STL-110
160mm	1	VCPL-KIE-STL-160



AERATOR

Size	Qty	Part no.
110mm	1	VVEN-110-110-75D
160mm	1	VVEN-160-110-75D



ACCESS PIPE

Size	Colour	Qty	Part no.
110mm	BL	6	VCZ-110-000-00D
160mm	BL	6	VCZ-160-000-00D



8-WAY COLLAR BOSS

Size	Colour	Qty	Part no.
110mm	BL	1	SCB41BL†

Solvent socket / spigot

PVCu products manufactured using a mineral filler

dBlue

Accoustic drainage



BRANCH - 5 bosses

Size	Colour	Qty	Part no.
110mm	BL	1	SY405BL†

BRANCH - No bosses

Size	Colour	Qty	Part no.
110mm	BL	4	SY401BL



DOUBLE BRANCH

Size	Colour	Qty	Part no.
110mm	BL	4	SY404BL†

CORNER BRANCH

Size	Colour	Qty	Part no.
110mm	BL	12	SY411BL



BOSS PIPE

Size	Colour	Qty	Part no.
110mm	BL	1	SW40BL†

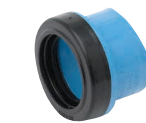
Additional Size are available.
For further information, contact our Customer Services department.



STRAIGHT COUPLING

Size	Colour	Qty	Part no.
110mm	BL	4	SE402BL†

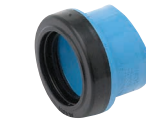
Triple socket



BOSS CONNECTOR - 32mm

Size	Colour	Qty	Part no.
32mm	BL	1	SA411XBL†

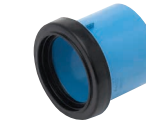
To connect to standard Marley Waste pipe



BOSS CONNECTOR - 40mm

Size	Colour	Qty	Part no.
40mm	BL	1	SA421XBL†

To connect to standard Marley Waste pipe



BOSS CONNECTOR - 50mm

Size	Colour	Qty	Part no.
50mm	BL	1	SA420XBL†

To connect to standard Marley Waste pipe

Active drainage ventilation



Active drainage ventilation

Key to symbols and colours: W: White B: Black G: Grey AG: Anthracite Grey BR: Brown NU: Neutral V: Vandyke Brown
 FF: Foundry Finish  Kitemark certified product  BBA certified product



STUDOR P.A.P.A. (Positive Air Pressure Attenuator)

Size	Qty	Part no.
75/100mm 	1	8F-STU616-WHB

INSTALLATION RECOMMENDATIONS

5 - 10 floors	One unit on the base
11 - 15 floors	One unit on the base, one halfway
16 - 25 floors	One on base, one on 5th floor, one half way or remaining floors above 5th floor
26 - 50 floors	Two units in series on the base, then one unit on every fifth floor up to the 25th floor, and then one every 10th floor
51 or more	Please consult with manufacturer for further information

VOLUME CAPACITY

Series assembly	(litres)
1 unit	3.785
2 units	7.570
3 units	11.355
4 units	15.140

Temperature range:
 - 20°C to + 60°C - 40°F to + 150°F

Max. pressure rating:
 10,000 Pa (1m/40" H₂O) at 0 Pa or higher



STUDOR MAXI-VENT WITH CONNECTOR

Size	Qty	Part no.
75/100mm 	1	49112

PERFORMANCE PARAMETER

Temperature range:
 - 40°C to + 60°C (CE)
 - 40°F to + 150°F (ASSE)

Opening pressure:
 -70 Pa (-0.010 PSI)

Max. pressure rating tightness:
 10,000 Pa (1m/40" H₂O) at 0 Pa or higher

Air flow capacity	Branch	Stack
Europe	32 l/s	32 l/s
AU/NZ	32 l/s / 1728 FU	32 l/s / 125 FU
USA	1 to 160 DFU	72 to 500 DFU



STUDOR MAXI-VENT ALUMINIUM COVER

Size	Qty	Part no.
75/100mm 	1	99093

For use with product Part no. 49112 (Maxi-vent)



STUDOR MINI-VENT WITH CONNECTOR

Size	Qty	Part no.
32-63mm 	1	49017

PERFORMANCE PARAMETER

Temperature range:
 - 20°C to + 60°C (CE)
 - 40°F to + 150°F (ASSE)

Opening pressure:
 -70 Pa (-0.010 PSI)

Max. pressure rating tightness:
 10,000 Pa (1m/40" H₂O) at 0 Pa or higher

Air flow capacity	Branch	Stack
Europe	75 l/s	75 l/s
AU/NZ	75 l/s / 94 FU	75 l/s / 7 FU
USA	1 to 160 DFU	8 to 24 DFU

Here to support you and your project



Let us help you with your project challenges

Our website is packed full of useful product information, calculation tools, BIM and CAD models, training videos and installation guides.

Our experts are also on hand to provide specification advice, on-site support and details on our bespoke fabrication services.

To find more visit:
alixis.co.uk



Friaphon



Friaphon

Sound attenuated drainage



SOUND INSULATED PIPE - With plain end

Nominal Diameter	Pipe Diameter	Standard Length	Product Part no.
100mm	110mm	3m	FP 12 12 71
150mm	160mm	3m	FP 12 12 73



DOUBLE COUPLER - Standard connection

Nominal Diameter	Pipe Diameter	Standard Length	Product Part no.
100mm	110mm	10m	FP 12 22 70
150mm	160mm	2m	FP 12 22 72



BEND 15°

Nominal Diameter	Pipe Diameter	Bend	Standard pack qty	Product Part no.
100mm	110mm	15°	10	FP 12 20 19
150mm	160mm	15°	2	FP 12 20 31



BEND 30°

Nominal Diameter	Pipe Diameter	Bend	Standard pack qty	Product Part no.
100mm	110mm	30°	10	FP 12 20 20
150mm	160mm	30°	2	FP 12 20 32



BEND 45°

Nominal Diameter	Pipe Diameter	Bend	Standard pack qty	Product Part no.
100mm	110	45°	10	FP 12 20 21
150mm	160	45°	2	FP 12 20 33



BEND 67°

Nominal Diameter	Pipe Diameter	Bend	Standard pack qty	Product Part no.
100mm	110mm	67°	10	FP 12 20 22



BEND 87°

Nominal Diameter	Pipe Diameter	Bend	Standard pack qty	Product Part no.
100mm	110mm	87°	10	FP 12 20 24
150mm	160mm	87°	2	FP 12 20 36



SHORT CUSHIONING SECTION - Height of fall up to 10m

Nominal Diameter	Pipe Diameter	Bend	Standard pack qty	Product Part no.
100mm	110mm	90°	5	FP 12 23 07
150mm	160mm	90°	2	FP 12 23 09



LONG CUSHIONING SECTION - Height of fall exceeding 10m

Nominal Diameter	Pipe Diameter	Bend	Standard pack qty	Product Part no.
100mm	110mm	90°	5	FP 12 23 01
150mm	160mm	90°	2	FP 12 23 03



BRANCH 45°

Nominal Diameter	Pipe Diameter	Standard pack qty	Product Part no.
100/100	110/110mm	10	FP 12 22 24
150/100	160/100	2	FP 12 22 39
150/150	160/160	2	FP 12 22 45



SINGLE BRANCH 92½° - Five boss

Nominal Diameter	Pipe Diameter	Standard pack qty	Product Part no.
100/100mm	110mm	6	FP 12 26 01



SINGLE BRANCH 92½°

Nominal Diameter	Pipe Diameter	Standard pack qty	Product Part no.
150/150mm	160mm	3	FP 12 27 03



SINGLE BRANCH 92½° - Two boss, unequal

Nominal Diameter	Pipe Diameter	Standard pack qty	Product Part no.
150/100mm	160x110mm	3	FP 12 28 03



DOUBLE BRANCH 45°

Nominal Diameter	Pipe Diameter	Standard pack qty	Product Part no.
150/100mm	160x110mm	3	FP 12 28 03

All supplied without boss connections.



DOUBLE BRANCH 92½° - Four boss

Nominal Diameter	Pipe Diameter	Standard pack qty	Product Part no.
100/100mm	110/110mm	4	FP 12 30 01



CORNER BRANCH 92½° - Two boss/ access upstand

Nominal Diameter	Pipe Diameter	Standard pack qty	Product Part no.
100mm	110mm	2	FP 12 31 01



ACCESS PIPE

Nominal Diameter	Pipe Diameter	Standard pack qty	Product Part no.
100mm	110mm	10	FP 12 25 26
150mm	160mm	2	FP 12 25 28

All supplied without boss connections.



ACCESS BOSS PIPE - Three boss upstand

Nominal Diameter	Pipe Diameter	Standard pack qty	Product Part no.
100mm	110mm	9	FP 12 32 01



BOSS PIPE - Four boss upstands, one open

Nominal Diameter	Pipe Diameter	Standard pack qty	Product Part no.
100mm	110mm	11	FP 12 33 01
150mm	150mm	6	FP 12 33 03



STRAP-ON BOSS

Nominal Diameter	Standard pack qty	Product Part no.
110 x 32mm	1	FP 12 35 01
110 x 40mm	1	FP 12 36 01
110 x 50mm	1	FP 12 37 01
160 x 50mm*	10	FP 12 34 03

*For push fit connection use FP 12 39 ** boss connectors.



WASTE MANIFOLD* - Four port

Size	Standard pack quantity	Product Part no.
110mm	18	FP 12 43 01

* For 32mm use with 32mm Rubber Boss Adaptor FP 12 40 01
For 40mm use with 40mm Rubber Boss Adaptor FP 12 40 02
For 50mm use with 50mm Solvent Boss Adaptor FP 12 41 0



REDUCER

Nominal Diameter	Pipe Diameter	Standard pack qty	Product Part no.
150/110mm	160/110mm	2	FP 12 25 10



REDUCER - Solvent socket, single boss upstand

Size	Description	Standard pack qty	Product Part no.
110mm	110-50 (Waste)	1	FP 12 38 01



SLEEVE

Nominal Diameter	Pipe Diameter	Standard pack qty	Product Part no.
100mm	110mm	10	FP 12 25 30
150mm	160mm	2	FP 12 25 32

Only for repair use.

Friaphon

Sound Attenuated Drainage



BONDING SLEEVE

Nominal Diameter (mm)	Size (mm)	Standard pack qty	Product Part no.
100	110	10	FP 12 25 44
150	160	2	FP 12 25 46



DOUBLE BONDING SLEEVE

Nominal Diameter (mm)	Size (mm)	Standard pack qty	Product Part no.
100	110	10	FP 12 25 62
150	160	2	FP 12 25 64



SOCKET PLUG

Nominal Diameter (mm)	Size (mm)	Standard pack qty	Product Part no.
100	110	10	FP 12 25 40



ACCESS CAP - Screwed

Description	Size (mm)	Standard pack qty	Product Part no.
Spigot tail	110	1	FP 12 42 01



BOSS CONNECTOR - Solvent joint

Description	Size (mm)	Standard pack qty	Product Part no.
Ring seal socket/spigot for solvent joint	32	1	FP 12 39 01
Ring seal socket/spigot for solvent joint	40	1	FP 12 39 02
Ring seal socket/spigot for solvent joint	50	1	FP 12 39 03



BOSS ADAPTOR - Rubber push-fit

Size (mm)	Standard pack quantity	Product Part no.
32	10	FP 12 40 01
40	10	FP 12 40 02



BOSS ADAPTOR - Solvent joint

Description	Size (mm)	Standard pack qty	Product Part no.
90° solvent connection	50	10	FP 12 41 01

Use for 50mm waste connection to waste manifold.



SUPPORT CLIP - With support ring and wall fixing

Nominal Diameter (mm)	Size (mm)	Standard pack qty	Product Part no.
100	110	5	FP 12 13 01
150	160	2	FP 12 13 03



RUBBER LINED PIPE CLIP

Nominal Diameter (mm)	Size (mm)	Standard pack qty	Product Part no.
100	110	50	FT PC 11 00
150	160	50	FT PC 16 01



LUBRICANT

Contents	Standard pack quantity	Product Part no.
125g	50	FP 12 29 70



CLEANER

Size	Standard pack quantity	Product Part no.
1ltr	1	GD171P



PVC-U RH THF FREE SOLVENT CEMENT

Size	Standard pack quantity	Product Part no.
½ 1ltr	12	03 462 397



PIPE CUTTER

Dimension (mm)	Standard pack quantity	Product Part no.
50-125	1	FT 80 00 03
110-160	1	FT 80 00 09



CHAMFERING TOOL

Dimension (mm)	Standard pack quantity	Product Part no.
75-160	1	FT 55 05 10



Innovative aluminium guttering, rainwater drainage and eaves solutions

- Looks and performs like cast iron but is 65% lighter
- 100% recyclable
- Simple and fast installation
- Available in a variety of colours
- 50+ years life expectancy
- Guttering, fascia and soffit systems, coping systems and drainage outlets



To find out more visit:
marleyalutec.co.uk

HTA



HTA

Pipe and solvent weld fittings



C-PVC PIPE, CHAMFERED BOTH ENDS - PN16

Size	Standard Length	Standard pack qty	Product Part no.
32mm	3m	10	GHHT3216
40mm	3m	10	GHHT4016
50mm	3m	5	GHHT5016
63mm	4m	5	GTUBHT63
75mm	4m	1	GTUBHT75
90mm	4m	1	GTUBHT90
110mm	4m	1	GUBHT110
125mm	4m	1	GUBHT125
160mm	4m	1	GUBHT160



C-PVC PIPE, CHAMFERED BOTH ENDS - PN25

Size	Standard Length	Standard pack qty	Product Part no.
16mm	3m	10	GUBHT163
20mm	3m	10	GUBHT203
25mm	3m	10	GUBHT253
32mm	3m	10	GUBHT323
40mm	3m	10	GUBHT403
50mm	3m	5	GUBHT503
63mm	4m	5	GHHT6325



ELBOW 90°

Size	Standard pack quantity	Product Part no.
16mm	15	GH4M16
20mm	15	GH4M20
25mm	10	GH4M25
32mm	10	GH4M32
40mm	10	GH4M40
50mm	5	GH4M50
63mm	1	GH4M63
75mm	1	GH4M75
90mm	1	GH4M90
110mm	1	GH4M110
125mm	1	GH4M125
160mm	1	GH4M160



ELBOW 45°

Size	Standard pack quantity	Product Part no.
16mm	15	GH8M16
20mm	15	GH8M20
25mm	10	GH8M25
32mm	10	GH8M32
40mm	10	GH8M40
50mm	5	GH8M50
63mm	1	GH8M63
75mm	1	GH8M75
90mm	1	GH8M90
110mm	1	GH8M110
125mm	1	GH8M125
160mm	1	GH8M160



SOCKET

Size	Standard pack quantity	Product Part no.
16mm	15	GHMA16
20mm	15	GHMA20
25mm	10	GHMA25
32mm	10	GHMA32
40mm	10	GHMA40
50mm	5	GHMA50
63mm	1	GHMA63
75mm	1	GHMA75
90mm	1	GHMA90
110mm	1	GHMA110
125mm	1	GHMA125
160mm	1	GHMA160



END CAP

Size	Standard pack quantity	Product Part no.
16mm	15	GHBO16
20mm	15	GHBO20
25mm	10	GHBO25
32mm	10	GHBO32
40mm	10	GHBO40
50mm	5	GHBO50
63mm	1	GHBO63
75mm	1	GHBO75
90mm	1	GHBO90
110mm	1	GHBO110
125mm	1	GHBO125
160mm	1	GHBO160



T-PIECE 90°

Size	Standard pack quantity	Product Part no.
16mm	15	GHTE16
20mm	15	GHTE20
25mm	10	GHTE25
32mm	10	GHTE32
40mm	10	GHTE40
50mm	5	GHTE50
63mm	1	GHTE63
75mm	1	GHTE75
90mm	1	GHTE90
110mm	1	GHTE110
125mm	1	GHTE125
160mm	1	GHTE160



REDUCING BUSH - Short pattern

Size	Standard pack quantity	Product Part no.
20/16mm	15	GHRS20
25/20mm	20	GHRS25
32/25mm	10	GHRS32
40/32mm	10	GHRS40
50/40mm	5	GHRS50
63/50mm	1	GHRS63
75/63mm	1	GHRS75
90/75mm	1	GHRS90
110/90mm	1	GHRS110
125/63mm	1	GRDC1263
125/75mm	1	GRDC1275
125/110mm	1	GHRS125
160/110mm	1	GRDC1611
160/125mm	1	GRDC1612

HTA

Solvent weld fittings



REDUCED TEE

Size	Standard pack quantity	Product Part no.
20/16mm	15	GHTR2016
25/16mm	10	GHTR2516
25/20mm	10	GHTR2520
32/16mm*	10	GHTR3216
32/20mm	10	GHTR3220
32/25mm	10	GHTR3225
40/20mm	5	GHTR4020
40/25mm	5	GHTR4025
40/32mm	5	GHTR4032
50/20mm	5	GHTR5020
50/25mm	5	GHTR5025
50/32mm	5	GHTR5032
50/40mm	5	GHTR5040
63/20mm	1	GHTR6320
63/25mm	1	GHTR6325
63/32mm	1	GHTR6332
63/40mm	1	GHTR6340
63/50mm	1	GHTR6350
75/20mm	1	GHTR7520
75/25mm	1	GHTR7525
75/32mm	1	GHTR7532
75/40mm	1	GHTR7540
75/50mm	1	GHTR7550
75/63mm	1	GHTR7563
90/32mm	1	GHTR9032
90/40mm	1	GHTR9040
90/50mm	1	GHTR9050
90/63mm	1	GHTR9063
90/75mm	1	GHTR9075
110/40mm	1	GHTR1140
110/50mm	1	GHTR1150
110/63mm	1	GHTR1163
110/75mm	1	GHTR1175
110/90mm	1	GHTR1190

*Made to Order (Please refer to our Terms & Conditions)



REDUCER

Size	Standard pack quantity	Product Part no.
25/16mm	10	GHRD2516
32/16mm*	10	GHRD3216
32/20mm	10	GHRD3220
40/16mm*	5	GHRD4016
40/20mm	5	GHRD4020
40/25mm	5	GHRD4025
50/20mm	5	GHRD5020
50/25mm	5	GHRD5025
50/32mm	5	GHRD5032
63/20mm	1	GHRD6320
63/25mm	1	GHRD6325
63/32mm	1	GHRD6332
63/40mm	1	GHRD6340
75/20mm	1	GHRD7520
75/25mm	1	GHRD7525
75/32mm	1	GHRD7532
75/40mm	1	GHRD7540
75/50mm	1	GHRD7550
90/25mm	1	GHRD9025
90/32mm	1	GHRD9032
90/40mm	1	GHRD9040
90/50mm	1	GHRD9050
90/63mm	1	GHRD9063
110/50mm	1	GHRD1150
110/63mm	1	GHRD1163
110/75mm	1	GHRD1175
125/90mm	1	GHRD1290
160/75mm	1	GHRD1675
160/90mm	1	GHRD1690
160/110mm	1	GHRD1611
160/125mm	1	GHRD1612

*Made to Order (Please refer to our Terms & Conditions)



INSTRUMENTATION TEE - Brass thread female branch

Size	Standard pack quantity	Product Part no.
75mm x 1/2"	1	GTL7512
90mm x 1/2"	1	GTL9012
110mm x 1/2"	1	GML11012
125mm x 1/2"	1	GTL12512
160mm x 1/2"	1	GTL16012

*Made to Order (Please refer to our Terms & Conditions)



ADAPTOR NIPPLE A - Brass thread male

Size	Standard pack quantity	Product Part no.
20/25mm x 1/2"	5	GHEAL20
25/32mm x 3/4"	5	GHEAS25
32/40mm x 1"	5	GHEAS32
16/20mm x 3/8"	5	GHEAL16
20/25mm x 1/2"	5	GHEAL20
25/32mm x 3/4"	5	GHEAL25
32/40mm x 1"	5	GHEAL32
40/50mm x 1 1/4"	1	GHEAL40
50/63mm x 1 1/2"	1	GHEAL50
63/75mm x 2"	1	GHEAL63
75/90mm x 2 1/2"	1	GHEAL75
90/110mm x 3"	1	GHEAL90

*Made to Order (Please refer to our Terms & Conditions)



ADAPTOR NIPPLE B - Brass thread male

Size	Standard pack quantity	Product Part no.
16/20mm x 1/2"	5	GHEBL16
20/25mm x 1/2"	5	GHEBL20
25/32mm x 1"	5	GHEBL25

*Made to Order (Please refer to our Terms & Conditions)



ADAPTOR NIPPLE A - 316L Stainless steel male thread insert

Size	Standard pack quantity	Product Part no.
20/25mm x 1/2"	5	GHEAS20
25/32mm x 3/4"	5	GHEAS25
32/40mm x 1"	5	GHEAS32

*Made to Order (Please refer to our Terms & Conditions)

HTA

Solvent weld fittings



3 PIECE UNION C-PVC - Male thread brass

Size	Standard pack quantity	Product Part no.
16 mm x 3/8"	5	GH3F/L16
20mm x 1/2"	5	GH3F/L20
25mm x 3/4"	5	GH3F/L25
32mm x 1"	5	GH3F/L32
40mm x 1 1/4"	5	GH3F/L40
50mm x 1 1/2"	1	GH3F/L50
63mm x 2"	1	GH3F/L63

*Made to Order (Please refer to our Terms & Conditions)



3 PIECE UNION C-PVC - Female thread brass

Size	Standard pack quantity	Product Part no.
16 mm x 3/8"	5	GH3G/L16
20mm x 1/2"	5	GH3G/L20
25mm x 3/4"	5	GH3G/L25
32mm x 1"	5	GH3G/L32
40mm x 1 1/4"	5	GH3G/L40
50mm x 1 1/2"	1	GH3G/L50
63mm x 2"	1	GH3G/L63

*Made to Order (Please refer to our Terms & Conditions)



3 PIECE UNION (C-PVC) - Plastic (C-PVC) male thread

Size	Standard pack quantity	Product Part no.
16mm x 1/2"	5	GH3FPB16
20mm x 1/2"	5	GH3F/P20
20mm x 3/4"	5	GH3FPB20
25mm x 3/4"	5	GH3F/P25
25mm x 1"	5	GH3FPB25



3 PIECE UNION (C-PVC) - Plastic (C-PVC) female

Size	Standard pack quantity	Product Part no.
16mm	15	GH3P16
20mm	15	GH3P20
25mm	10	GH3P25
32mm	10	GH3P32
40mm	10	GH3P40
50mm	5	GH3P50
63mm	1	GH3P63



THREADED ADAPTOR FEMALE - Stainless steel insert

Size	Standard pack quantity	Product Part no.
20/25mm x 1/2"	1	GHMMS20
25/32mm x 3/4"	1	GHMMS25
32/40mm x 1"	1	GHMMS32

*Made to Order (Please refer to our Terms & Conditions)



THREADED ADAPTOR FEMALE - Brass thread*

Size	Standard pack quantity	Product Part no.
16/20mm x 3/8"	5	GHMML16
20/25mm x 1/2"	5	GHMML20
25/32mm x 3/4"	5	GHMML25
32/40mm x 1"	5	GHMML32
40/50mm x 1 1/4"	1	GHMML40
50/63mm x 1 1/2"	1	GHMML50
63/75mm x 2"	1	GHMML63
75/90mm x 2 1/2"	1	GHMML75
90/110mm x 3"	1	GHMML90

*BSP female (parallel) to male (taper) conversion nipples available on request.

**Made to Order (Please refer to our Terms & Conditions)



THREADED CONVERSION NIPPLE

Size	Standard pack quantity	Product Part no.
1/2 x 1/2"	1	GCNL12
3/4 x 3/4"	1	GCNL34
1 x 1"	1	GCNL1
1 1/4 x 1 1/4"	1	GCNL114
1 1/2 x 1 1/2"	1	GCNL112
2 x 2"	1	GCNL2

BSP female (parallel) to male (taper) conversion nipples available on request.



TAP CONNECTOR WITH BRASS NUT

Size	Standard pack quantity	Product Part no.
16mm x 1/2"	15	GHDR16
20mm x 3/4"	15	GHDR20
25mm x 1"	10	GHDR25
32mm x 1 1/4"	10	GHDR32
40mm x 1 1/2"	10	GHDR40
50mm x 2"	5	GHDR50

HTA

Solvent weld fittings



THREADED TEE REDUCED 90° - Brass thread female

Size	Standard pack quantity	Product Part no.
32mm x 3/4"	1	GHTGRL32
40mm x 3/4"	1	GHTGRL40
50mm x 3/4"	1	GHTGRL50
63mm x 3/4"	1	GHTGRL63

32mm x 1/2"	1	GHTGR322
40mm x 1/2"	1	GHTGR402
50mm x 1/2"	1	GHTGR502
63mm x 1/2"	1	GHTGR632

*Made to Order (Please refer to our Terms & Conditions)



THREADED ELBOW 90° - Brass thread female and back plate

Size	Standard pack quantity	Product Part no.
16mm x 1/2"	5	GH4GP16
20mm x 1/2"	5	GH4GP20
25mm x 3/4"	5	GH4GP25

*Made to Order (Please refer to our Terms & Conditions)



THREADED ELBOW 90° - Brass thread female

Size	Standard pack quantity	Product Part no.
16mm x 1/2"	5	GH4GL16
20mm x 1/2"	5	GH4GL20
25mm x 3/4"	5	GH4GL25



THREADED ELBOW 90° - Brass thread female (For use with temperature probe)

Size (mm x inch)	Standard pack quantity	Product Part no.
32mm x 1/2"	1	GH4M1322
40mm x 1/2"	1	GH4M1402
50mm x 1/2"	1	GH4M1502
63mm x 1/2"	1	GH4M1632

*Made to Order (Please refer to our Terms & Conditions)



STRAIGHT BRASS COUPLING - For use with temperature contact probe

Size (mm)	Standard pack quantity	Product Part no.
16mm	1	GHMI 16
20mm	1	GHMI 20
25mm	1	GHMI 25
32mm	1	GHMI 32



ANCHOR POINT

Size	Standard pack quantity	Product Part no.
25mm	2	GHPTF25
32mm	2	GHPTF32
40mm	2	GHPTF40
50mm	2	GHPTF50
63mm	2	GHPTF63



SERRATED STUB FLANGE

Size	Standard pack quantity	Product Part no.
25mm	10	GHCS25
32mm	10	GHCS32
40mm	10	GHCS40
50mm	5	GHCS50
63mm	1	GHCS63
75mm	1	GHCS75
90mm	1	GHCS90
110mm	1	GHCS110
125mm	1	GHCS125
160mm	1	GHCS160



BALL VALVE - Flanged socket

Size	Standard pack quantity	Product Part no.
75mm	1	GVHFEP75
90mm	1	GVHFEP90
110mm	1	GVHFEP11



PLAIN NIPPLE

Size	Standard pack quantity	Product Part no.
16 x 33mm*	15	GHMC16
20 x 37mm	15	GHMC20
25 x 42mm	10	GHMC25
32 x 49mm	10	GHMC32
40 x 57mm	10	GHMC40
50 x 67mm	5	GHMC50
63 x 80mm	1	GHMC63
75 x 92mm	1	GHMC75

*Made to Order (Please refer to our Terms & Conditions)



BALL VALVE - Double union

Size	Standard pack quantity	Product Part no.
16mm	1	GVHCEP16
20mm	1	GVHCEP20
25mm	1	GVHCEP25
32mm	1	GVHCEP32
40mm	1	GVHCEP40
50mm	1	GVHCEP50
63mm	1	GVHCEP63

HTA

Accessories



LINEAR EXPANSION BELOW - To be flanged (PN16)

Size	Standard pack quantity	Product Part no.
40mm	1	GCOMP40
50mm	1	GCOMP50
63mm	1	GCOMP63
75mm	1	GCOMP75
90mm	1	GCOMP90
110mm	1	GCOMP110
125mm	1	GCOMP125
160mm	1	GCOMP160



FLANGE KITS FOR 'COMP' BELOW

Size	Standard pack quantity	Product Part no.
40mm*	1	GCOMPK40
50mm*	1	GCOMPK50
63mm*	1	GCOMPK63
75mm*	1	GCOMPK75
90mm*	1	GCOMPK90
110mm*	1	GCOMPK110
125mm*	1	GCOMPK120
160mm*	1	GCOMPK160

*Made to Order (Please refer to our Terms & Conditions)



CPVC EXPANSION COMPENSATOR

Size	Standard pack quantity	Product Part no.
32mm	1	GHCOMP32
40mm	1	GHCOMP40
50mm	1	GHCOMP50
63mm	1	GHCOMP63



FIBREGLASS REINFORCED BACKING RING WITH PN16 DRILLING - (BVR = Polyester, BPA = Polyamide)

Size	Standard pack quantity	Product Part no.
FLANGE DRILLED 10/16 D.25 x 20mm	1	GBVR20
FLANGE DRILLED 10/16 D.32 x 25mm	1	GBVR25
FLANGE DRILLED 10/16 D.40 x 32mm	1	GBVR32B
FLANGE DRILLED 10/16 D.50 x 40mm	1	GBPA40
FLANGE DRILLED 10/16 D.63 x 50mm	1	GBPA50
FLANGE DRILLED 10/16 D.75 x 60mm	1	GBPA65
FLANGE DRILLED 10/16 D.90 x 80mm	1	GBPA80
FLANGE DRILLED 10/16 D.110 x 100mm	1	GBPA100
FLANGE DRILLED 10/16 D.125 x 125	1	GBPA125
FLANGE DRILLED 10/16 D.160 x 150	1	GBVR150



FLAT GASKETS FOR SERRATED STUB FLANGE - EPDM

Size	Standard pack quantity	Product Part no.
20mm	1	GJPNCS20
25mm	1	GJPNCS25
32mm	1	GJPNCS32
40mm	1	GJPNCS40
50mm	1	GJPNCS50
63mm	1	GJPNCS63
75mm	1	GJPNCS75
90mm	1	GJPNCS90
110mm	1	GPNC110
125mm	1	GPNC125
140mm	1	GPNC140
160mm	1	GPNC160



EXPANSION/CONTRACTION BRAID - Male thread x female loose nut

Size	Standard pack quantity	Product Part no.
16mm x 1/2 x 1/2"	1	GHCD/G16
20mm x 1/2 x 1/2"	1	GHCD/G20
25mm x 3/4 x 3/4"	1	GHCD/G25
32mm x 1 x 1"	1	GHCD/G32
40mm x 1 1/4 x 1 1/4"	1	GHCD/G40
50mm x 1 1/2 x 1 1/2"	1	GHCD/G50

*Made to Order (Please refer to our Terms & Conditions)



EXPANSION/CONTRACTION BRAID (SILICONE) - Male thread x female loose nut

Size	Standard pack quantity	Product Part no.
16mm x 1/2 x 1/2"	1	GHFS/G16
20mm x 1/2 x 1/2"	1	GHFS/G20
25mm x 3/4 x 3/4"	1	GHFS/G25
32mm x 1 x 1"	1	GHFS/G32
40mm x 1 1/4 x 1 1/4"	1	GHFS/G40

*Made to Order (Please refer to our Terms & Conditions)



MONOKLIP BRACKET WITH M8 - Threaded insert

Size	Standard pack quantity	Product Part no.
16mm	50	GHCK16/8
20mm	50	GHCK20/8
25mm	50	GHCKC258
32mm	25	GHCKC328
40mm	25	GHCKC408
50mm	25	GHCKC508
63mm	25	GHCKC638
75mm	1	GHCKC758
90mm	1	GHCKC908
110mm	1	GHCKC110
125mm	1	GHCKC125
160mm	1	GHCKC160

HTA

Accessories



RUBBER LINED PIPE CLIP*

Size	Thread	Standard pack quantity	Product Part no.
16mm	M10	50	FT PC 1600
20mm	M10	50	FT PC 2000
25mm	M10	50	FT PC 2500
32mm	M10	50	FT PC 3200
40mm	M10	50	FT PC 4000
50mm	M10	50	FT PC 5000
63mm	M10	50	FT PC 6300
75mm	M10	50	FT PC 7500
90mm	M10	50	FT PC 9000
110mm	M10	50	FT PC 1100
160mm	M10	50	FT PC 1601

*Single screw up to 32mm; double screw above 32mm



CHAMFERING TOOL

Size	Standard pack quantity	Product Part no.
Up to 50mm	1	GCONE50U
75-160mm	1	FTS50510



TEMPERATURE PROBE KIT WITH PROBE HOLDER

Size	Standard pack quantity	Product Part no.
50 x 1/2"	1	GDGSF50
60 x 1/2"	1	GDGSF60
90 x 1/2"	1	GDGSF90
100 x 1/2"	1	GDGSF100
250 x 1/2"	1	GDGSF250



TEMPERATURE CONTACT PROBE

Size	Standard pack quantity	Product Part no.
16-32mm*	1	GSF1632

*Made to Order (Please refer to our Terms & Conditions)



HTA SOLVENT CEMENT

Size	Standard pack quantity	Product Part no.
250ml	1	GRERFIXP
1ltr	1	GRERFIXB



HTA SOLVENT CEMENT - THF Free

Size	Standard pack quantity	Product Part no.
250ml	1	GRERFIXP-ECO
1ltr	1	GRERFIXB-ECO



CLEANER

Size	Standard pack quantity	Product Part no.
1ltr	1	GD171P

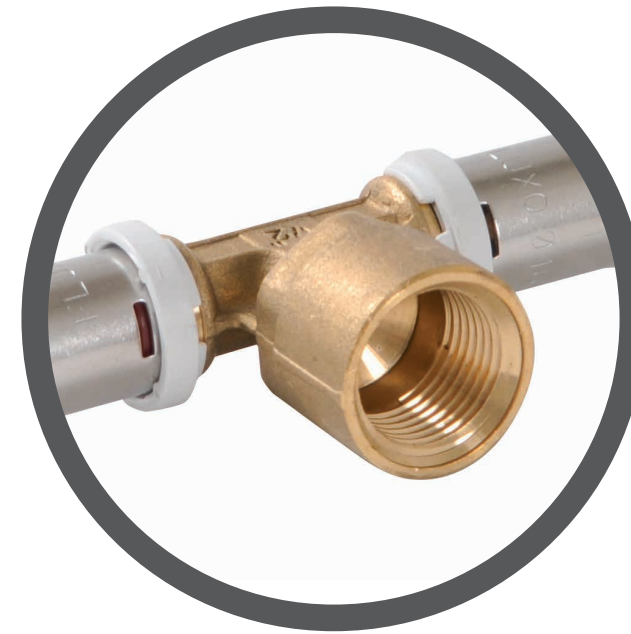


PIPE CUTTER

Description	Standard pack quantity	Product Part no.
16-50mm pipe cutter	1	FT 80 00 01
50-125mm pipe cutter	1	FT 80 00 03
110-160mm pipe cutter	1	FT 80 00 09
16-63mm spare cutter wheel	1	FT 80 00 02
50-125mm spare cutter wheel	1	FT 80 00 04



Fluxo®



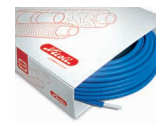
Fluxo®

Pipes and coils



BARE COILS

Size (mm)	Length (mm)	Weight Kg/m or EA	Product Part no.
16mm	100m	0.104	FLEM100C16
16mm	200m	0.137	FLEM200C16
20mm	100m	0.104	FLEM100C20
26mm	50m	0.253	FLEM50C26
32mm	50m	0.351	FLEM50C32



BLUE SHEATHED COILS

Size (mm)	Length (mm)	Weight Kg/m or EA	Product Part no.
16mm	100m	0.100	FLEM100FB16
16mm	50m	0.100	FLEM50FB16
20mm	50m	0.140	FLEM50FB20



RED SHEATHED COILS

Size (mm)	Length (mm)	Weight Kg/m or EA	Product Part no.
16mm	100m	0.100	FLEM100FR16
16mm	50m	0.100	FLEM50FR16
20mm	50m	0.140	FLEM50FR20
26mm	50m	0.250	FLEM50FR26



PRE INSULATED COILS

Size (mm)	Length (mm)	Weight Kg/m or EA	Product Part no.
16mm	50m	0.137	FLEM50G10P16
20mm	50m	0.253	FLEM50G10P20
26mm	50m	0.351	FLEM50G10P26
32mm	25m	0.104	FLEM25G10P32



BARE PIPE LENGTHS

Size (mm)	Length (mm)	Weight Kg/m or EA	Product Part no.
16mm	3m	0.104	FLEM3L16
16mm	4m	0.137	FLEM4L16
20mm	3m	0.104	FLEM3L20
20mm	4m	0.253	FLEM4L20
26mm	4m	0.253	FLEM4L26
32mm	4m	0.351	FLEM4L32

Fluxo®

Brass fittings



THREADED BRASS MALE TRANSITION ELBOW 90°

Size (mm)	Weight Kg/m or EA	Product Part no.
16mm x 3/8"	0.076	FXC1612M
16mm x 1/2"	0.083	FXC1615M
20mm x 1/2"	0.098	FXC2015M
20mm x 3/4"	0.135	FXC2020M
26mm x 3/4"	0.173	FXC2620M
26mm x 1"	0.237	FXC2626M
32mm x 1"	0.302	FXC3226M



THREADED BRASS FEMALE TRANSITION ELBOW 90°

Size (mm)	Weight Kg/m or EA	Product Part no.
16mm x 1/2"	0.094	FXC1615F
20mm x 1/2"	0.114	FXC2015F
20mm x 3/4"	0.155	FXC2020F
26mm x 3/4"	0.194	FXC2620F
26mm x 1"	0.240	FXC2626F
32mm x 1"	0.303	FXC3226F



WALL MOUNTED BRASS TRANSITION ELBOW

Size (mm)	Weight Kg/m or EA	Product Part no.
16mm x 1/2"	0.158	FXCA1615F
20mm x 1/2"	0.180	FXCA2015F



BRASS TRANSITION ELBOW WITH ROTATING NUT 90°

Size (mm)	Weight Kg/m or EA	Product Part no.
16mm x 1/2"	0.089	FXCT1615F
20mm x 3/4"	0.115	FXCT1620F
20mm x 1/2"	0.114	FXCT2015F
20mm x 3/4"	0.138	FXCT2020F
26mm x 3/4"	0.184	FXCT2620F



THREADED BRASS MALE STRAIGHT TRANSITION ADAPTOR

Size (mm)	Weight Kg/m or EA	Product Part no.
16mm x 3/8"	0.056	FXM1612M
16mm x 1/2"	0.066	FXM1615M
16mm x 3/4"	0.095	FXM1620M
20mm x 1/2"	0.074	FXM2015M
20mm x 3/4"	0.107	FXM2020M
26mm x 1/2"	0.122	FXM2615M
26mm x 3/4"	0.116	FXM2620M
26mm x 1"	0.166	FXM2626M
32mm x 1"	0.178	FXM3226M

Fluxo®

Brass fittings



THREADED BRASS FEMALE STRAIGHT TRANSITION ADAPTOR

Size (mm)	Weight Kg/m or EA	Product Part no.
16mm x 1/2"	0.077	FXM1615F
16mm x 3/4"	0.107	FXM1620F
20mm x 1/2"	0.084	FXM2015F
20mm x 3/4"	0.117	FXM2020F
20mm x 1"	0.182	FXM2026F
26mm x 3/4"	0.143	FXM2620F
26mm x 1"	0.192	FXM2626F
32mm x 1"	0.211	FXM3226F
32mm x 1 1/4"	0.272	FXM3233F



STRAIGHT BRASS/COPPER TRANSITION ADAPTOR WITH OLIVE

Size (mm)	Weight Kg/m or EA	Product Part no.
16 x 15mm	0.076	FXM16CU15F
2m x 22mm	0.120	FXM20CU22F



BRASS/COPPER PIPE SPIGOT TRANSITION

Size (mm)	Weight Kg/m or EA	Product Part no.
20 x 22mm	0.096	FXM20CU22



STRAIGHT BRASS TRANSITION ADAPTOR FOR PER

Size (mm)	Weight Kg/m or EA	Product Part no.
16 x 12mm	0.024	FXM16PER12
16 x 16mm	0.026	FXM16PER16



BRASS REDUCER

Size (mm)	Weight Kg/m or EA	Product Part no.
26 x 16mm	0.094	FXM2616
26 x 20mm	0.100	FXM2620
32 x 16mm	0.139	FXM3216
32 x 20mm	0.142	FXM3220



THREADED STRAIGHT BRASS FEMALE COMPRESSION ADAPTOR

Size (mm)	Weight Kg/m or EA	Product Part no.
16mm x 1/2"	0.043	FXMP1615F
16mm x 3/4"	0.075	FXMP1620F
20mm x 3/4"	0.084	FXMP2020F



NICKEL MALE COMPRESSION ADAPTOR FOR HEATER

Size (mm)	Weight Kg/m or EA	Product Part no.
16mm x 3/8"	0.065	FLMPN1612M
16mm x 1/2"	0.060	FLMPN1615M
20mm x 1/2"	0.117	FLMPN2015M
20mm x 3/4"	0.121	FLMPN2020M



BRASS FEMALE TRANSITION ADAPTOR WITH ROTATING NUT

Size (mm)	Weight Kg/m or EA	Product Part no.
16mm x 3/8"	0.056	FXMT1612F
16mm x 1/2"	0.069	FXMT1615F
16mm x 3/4"	0.078	FXMT1620F
20mm x 1/2"	0.080	FXMT2015F
20mm x 3/4"	0.084	FXMT2020F
26mm x 3/4"	0.113	FXMT2620F
26mm x 1"	0.149	FXMT2626F
32mm x 1"	0.190	FXMT3226F
32mm x 1 1/4"	0.194	FXMT3233F



BRASS FEMALE WALL PLATE

Size (mm)	Weight Kg/m or EA	Product Part no.
16mm x 1/2"	0.479	FXSM1615F
20mm x 1/2"	0.509	FXSM2015F



BRASS FEMALE THREADED TRANSITION TEE

Size (mm)	Weight Kg/m or EA	Product Part no.
16mm x 1/2"	0.124	FXT1615F
20mm x 1/2"	0.161	FXT2015F
20mm x 3/4"	0.205	FXT2020F
26mm x 1/2"	0.253	FXT2615F
26mm x 3/4"	0.266	FXT2620F
32mm x 1/2"	0.373	FXT3215F
32mm x 3/4"	0.357	FXT3220F



BRASS MALE THREADED TRANSITION TEE

Size (mm)	Weight Kg/m or EA	Product Part no.
16mm x 1/2"	0.125	FXT1615M
26mm x 3/4"	0.246	FXT2620M



BRASS REDUCING TEE

Size (mm)	Weight Kg/m or EA	Product Part no.
16 x 20 x 16mm	0.120	FXT162016
20 x 20 x 16mm	0.140	FXT202016
20 x 26 x 20mm	0.241	FXT202620
26 x 16 x 20mm	0.202	FXT261620
26 x 26 x 16mm	0.230	FXT262616
26 x 26 x 20mm	0.232	FXT262620
32 x 16 x 32mm	0.327	FXT321632

Fluxo ZP®

PPSU fittings



PPSU CRIMP ELBOW A 90°

Size (mm)	Weight Kg/m or EA	Product Part no.
D.16	0.024	FLC16ZPN
D.20	0.034	FLC20ZPN
D.26	0.055	FLC26ZPN
D.32	0.074	FLC32ZPN



PPSU CRIMP EQUAL TEE

Size (mm)	Weight Kg/m or EA	Product Part no.
D.16	0.035	FLT16ZPN
D.20	0.050	FLT20ZPN
D.26	0.068	FLT26ZPN
D.32	0.108	FLT32ZPN



PPSU CRIMP REDUCING TEE

Size (mm)	Weight Kg/m or EA	Product Part no.
D.20/16/16	0.041	FLT201616ZPN
D.20/16/20	0.045	FLT201620ZPN
D.20/20/16	0.049	FLT202016ZPN
D.26/16/26	0.066	FLT261626ZPN
D.26/20/20	0.063	FLT262020ZPN
D.26/20/26	0.072	FLT262026ZPN
D.32/20/32	0.094	FLT322032ZPN
D.32/26/32	0.098	FLT322632ZPN



PPSU CRIMP SLEEVE REDUCER

Size (mm)	Weight Kg/m or EA	Product Part no.
D.20/16	0.063	FLM2016ZPN
D.32/26	0.057	FLM3226ZPN



PPSU EQUAL CRIMP SLEEVE

Size (mm)	Weight Kg/m or EA	Product Part no.
D.16	0.024	FLM16ZPN
D.20	0.029	FLM20ZPN
D.26	0.048	FLM26ZPN
D.32	0.062	FLM32ZPN

Fluxo®

Manifolds and screw caps



NICKEL PLATED MANIFOLDS

Size (mm)	Weight Kg/m or EA	Product Part no.
2 Port 3/4" Blue	0.308	COLR2SB20M
2 Port 1" Blue	0.376	COLR2SB26M
2 Port 3/4" Red	0.308	COLR2SR20M
2 Port 1" Red	0.376	COLR2SR26M
3 Port 3/4" Blue	0.460	COLR3SB20M
3 Port 1" Blue	0.502	COLR3SB26M
3 Port 3/4" Red	0.470	COLR3SR20M
3 Port 1" Red	0.502	COLR3SR26M
4 Port 3/4" Blue	0.660	COLR4SB20M
4 Port 1" Blue	0.660	COLR4SB26M
4 Port 3/4" Red	0.620	COLR4SR20M
4 Port 1" Red	0.660	COLR4SR26M



BRASS MANIFOLDS

Size (mm)	Weight Kg/m or EA	Product Part no.
2 Port 3/4"	0.205	COL2S20M
2 Port 1"	0.257	COL2S26M
3 Port 3/4"	0.290	COL3S20M
3 Port 1"	0.338	COL3S26M
4 Port 3/4"	0.385	COL4S20M
4 Port 1"	0.435	COL4S26M
5 Port 3/4"	0.447	COL5S20M
5 Port 1"	0.572	COL5S26M



SCREW CAPS FOR MANIFOLDS

Size (mm)	Weight g/m or EA	Product Part no.
1/2"	0.026	BC15F
3/4"	0.035	BC20F
1"	0.055	BC26F
1/4"	0.108	BC33F

Fluxo®

Clips and positioning rings



CUT-AWAY BRASS POSITIONING RINGS

Size (mm)	Weight Kg/m or EA	Product Part no.
Ø 16	0.010	10FLBM16
Ø 20	0.010	10FLBM20
Ø 26	0.010	10FLBM26



PIPE CLIPS

Size (mm)	Weight Kg/m or EA	Product Part no.
Ø 16-20 Single	0.006	CLIP1222B
Ø 16-20 Single /Double Set	0.008	CLIPCA1222B
Ø 16-20 Double	0.017	CLIPD1222B



CLIP REDUCTION RING

Size (mm)	Weight Kg/m or EA	Product Part no.
16/20	0.001	FLBKH20

Fluxo®

Aesthetic fitting covers



AESTHETIC FITTING CLIP COVERS FOR 90° CRIMPED ELBOW

Fits to	Weight Kg/m or EA	Product Part no.
FLC16	0.014	FLCKH16
FLC20 if cut : FLC2015m, FLC2020m, FLC2015f, FLC2020f, FLCt2015f, FLCt2020f	0.024	FLCKH20



AESTHETIC FITTING COVER FOR MALE TO FEMALE ELBOW TO SCREW

Fits to	Weight Kg/m or EA	Product Part no.
FLC1615F, FLC115M, FLCt1615F, FLCt1620F	0.008	FLCMFKH16



AESTHETIC FITTING COVERS FOR HALF SLEEVES

Fits to	Weight Kg/m or EA	Product Part no.
M/F: FLM16, FLM1615F, FLM1620F, FLM1612M, FLM1615M, FLMT1612F, FLMT1615F, FLMT1620F	0.005	FLMKH16
M/F: FLM20, FLM2020M, FKM2020F, FLM2015M, FLM2015F, FLMT2015F, FLMT2020F	0.007	FLMKH20



AESTHETIC FITTING COVERS FOR TEES

Fits to	Weight Kg/m or EA	Product Part no.
CLIP FOR EQUAL AND UNEQUAL CRIMP TEE FLT201620, FLT201616, FLT162016	0.026	FLTBKH20
CLIP FOR EQUAL AND UNEQUAL CRIMP TEE FLT16	0.138	FLTKH16
CLIP FOR EQUAL AND UNEQUAL CRIMP TEE FLT20 If cut : FLT2015M, FLT2020M, FLT2015F, FLT2020F	0.018	FLTKH20

Fluxo®

Crimping tools



MINI JAWS

Description	Weight Kg/m or EA	Product Part no.
Mini press 22V Metal case	8.000	578010R220
Mini press 22V ABS case	6.280	578014R220
Rapid Charger	0.470	571575R220
Crimping tool Mini TH 16	1.370	578352
Crimping tool Mini TH 20	1.340	578358
Crimping tool Mini TH 26	1.270	578362
Crimping tool Mini TH 32	1.210	578364



UNIVERSAL JAWS

Size (mm)	Weight Kg/m or EA	Product Part no.
16mm	1.960	570460
20mm	1.950	570470
26mm	2.210	570475
32mm	2.200	570480



BATTERY DRIVEN CRIMPING MACHINE

Description	Weight Kg/m or EA	Product Part no.
Akku press 22V Metal case	9.000	576010R220
Battery-driven crimping machine up to 75 mm diameter	7.000	576011R220
Spare Battery 22V 2.5AH for Akku press	0.420	571571R22

Fluxo®

Bending and cutting tools



TOOLS

Description	Weight Kg/m or EA	Product Part no.
Automatic pipe cutter PL 50-125 mm with internal deburrer	2.030	70032
Bending kit 16-18-20-25/26-32mm	5.450	153023
16mm to 40mm Multilayer Pipe Cutter	0.730	291220
Pipe cutter 42mm	0.930	291250
Hydro-bender kit 16-18-20-25/26-32mm	7.000	153523R
Tube cutter with integrated sheath cutter	0.320	291242R
Python hydraulic pipe bender 40-50-63 mm	47.240	590022R
Pipe cutter shears 16mm	0.800	V7010001
Pipe cutter shears 20mm	0.880	V7010003



EXTERNAL BENDING SPRINGS

Size (mm)	Weight Kg/m or EA	Product Part no.
16mm	0.430	V700001
20mm	0.530	V700003
32mm	0.820	V700005
26mm	0.650	V700006



INTERNAL BENDING SPRING

Size (mm)	Weight Kg/m or EA	Product Part no.
110 cm long for tubes Ø 16 mm	0.380	FLRC11016I

Fluxo®

Pipe preparation tools



CHAMFERING GAUGES

Size (mm)	Weight Kg/m or EA	Product Part no.
Pipe callibrator (16-20-26-32mm)	0.380	N80001
Pipe callibrator (40-50-63mm)	0.380	N80002



DRILL MOUNTABLE

Description/size	Weight Kg/m or EA	Product Part no.
Handle for attaching Chamfering Tools	n/a	IM0001
Chamfering Tool 16mm	0.080	CA0002
Chamfering Tool 20mm	0.100	CA0004
Chamfering Tool 26mm	0.140	CA0005
Chamfering Tool 32mm	0.200	CA0006



COIL STRAIGHTENING AND UNWINDING

Description	Weight Kg/m or EA	Product Part no.
Roller tube straightener	3.600	V900000
Tube straightening adapter	0.520	V900000A
Fixing clamp for workbenches of the roller straightener	1.700	V900000T
Coil Unwinder	10.020	V900040

SuperFlo ABS



SuperFlo ABS

Metric pipe & solvent weld fittings



METRIC PIPE SYSTEM – Plain PN10

Diameter	Standard length in metres	Product Part no.
16mm	5	11 555 305
20mm	5	11 555 306
25mm	5	11 555 307
32mm	5	11 555 308
40mm	5	11 555 309
50mm	5	11 555 310
63mm	5	11 555 311
75mm	5	11 555 312
90mm	5	11 555 313
110mm	5	11 555 314
125mm	5	11 555 315
140mm	5	11 555 316
160mm	5	11 555 317
200mm	5	11 555 318
225mm	5	11 555 319
250mm	5	11 555 320
315mm**	5	11 555 323
20mm*	6	11 551 306
25mm	6	11 551 307
32mm	6	11 551 308
40mm	6	11 551 309
50mm	6	11 551 310
63mm	6	11 551 311
75mm	6	11 551 312
90mm	6	11 551 313
110mm	6	11 551 314
125mm*	6	11 551 315
140mm*	6	11 551 316
160mm*	6	11 551 317
200mm*	6	11 551 318
225mm*	6	11 551 319
250mm*	6	11 551 320
315mm**	6	11 551 323

* Made to Order (Please refer to our Terms & Conditions).

** 315mm is PN8 rated



SOCKET

Size	Standard pack quantity	Product Part no.
16mm	10	11 100 305
20mm	10	11 100 306
25mm	10	11 100 307
32mm	10	11 100 308
40mm	10	11 100 309
50mm	10	11 100 310
63mm	5	11 100 311
75mm	1	11 100 312
90mm	1	11 100 313
110mm	1	11 100 314
125mm	1	11 100 315
140mm	1	11 100 316
160mm	1	11 100 317
200mm	1	11 100 318
225mm	1	11 100 319
250mm	1	11 100 320
315mm	1	11 100 323



REDUCING BUSH

Size	Standard pack quantity	Product Part no.
20 x 16mm	10	11 109 412
25 x 20mm	10	11 109 415
32 x 16mm	10	11 09 417
32 x 25mm	10	11 109 419
40 x 32mm	10	11 109 423
50 x 20mm	10	11 109 424
50 x 25mm	10	11 109 425
50 x 32mm	10	11 109 426
50 x 40mm	10	11 109 427
63 x 25mm	10	11 109 429
63 x 32mm	10	11 109 430
63 x 50mm	10	11 109 432
75 x 63mm	5	11 109 438
90 x 50mm	5	11 109 442
90 x 63mm	5	11 109 443
90 x 75mm	5	11 109 444
110 x 63mm	1	11 109 449
110 x 90mm	1	11 109 451
125 x 110mm	1	11 109 459
140 x 125mm	1	11 109 467
160 x 90mm	1	11 109 473
160 x 110mm	1	11 109 474
160 x 140mm	1	11 109 476
200 x 160mm	1	11 109 487
225 x 160mm	1	11 109 495
225 x 200mm	1	11 109 496
250 x 225mm	1	11 109 499
315 x 250mm	1	11 109 503



REDUCER – Plain/Spigot x plain

Size	Standard pack quantity	Product Part no.
(25 or 20) x 16mm	10	11 114 412
(32 or 25) x 20mm	10	11 114 415
(40 or 32) x 25mm	10	11 114 419
(50 or 40) x 32mm	10	11 114 423
(63 or 50) x 40mm	5	11 114 427
(75 or 63) x 50mm	5	11 114 432
(90 or 75) x 63mm	1	11 114 438
(110 or 90) x 75mm	1	11 114 444
(125 or 110) x 90mm	1	11 114 451
(140 or 125) x 110mm	1	11 114 459
(160 or 140) x 125mm	1	11 114 467
(200 or 160) x 140mm	1	11 114 476
(225 or 200) x 160mm	1	11 114 487



TEE 45° – Plain

Size	Standard pack quantity	Product Part no.
20mm	5	11 418 306
25mm	5	11 418 307
32mm	5	11 418 308
40mm	5	11 418 309
50mm	5	11 418 310
63mm	1	11 418 311

SuperFlo ABS

Metric solvent weld fittings



ELBOW 45°

Size	Standard pack quantity	Product Part no.
16mm	10	11 119 305
20mm	10	11 119 306
25mm	10	11 119 307
32mm	10	11 119 308
40mm	10	11 119 309
50mm	10	11 119 310
63mm	5	11 119 311
75mm	1	11 119 312
90mm	1	11 119 313
110mm	1	11 119 314
125mm	1	11 119 315
140mm	1	11 119 316
160mm	1	11 119 317
200mm	1	11 119 318
225mm	1	11 119 319
250mm	1	11 119 320
315mm	1	11 119 323



ELBOW 90°

Size	Standard pack quantity	Product Part no.
16mm	10	11 115 305
20mm	10	11 115 306
25mm	10	11 115 307
32mm	10	11 115 308
40mm	10	11 115 309
50mm	10	11 115 310
63mm	5	11 115 311
75mm	1	11 115 312
90mm	1	11 115 313
110mm	1	11 115 314
125mm	1	11 115 315
140mm	1	11 115 316
160mm	1	11 115 317
200mm	1	11 115 318
225mm	1	11 115 319
250mm	1	11 115 320
315mm	1	11 115 323



TEE 90° – Equal

Size	Standard pack quantity	Product Part no.
16mm	10	11 122 305
20mm	10	11 122 306
25mm	10	11 122 307
32mm	10	11 122 308
40mm	10	11 122 309
50mm	5	11 122 310
63mm	5	11 122 311
75mm	1	11 122 312
90mm	1	11 122 313
110mm	1	11 122 314
125mm	1	11 122 315
140mm	1	11 122 316
160mm	1	11 122 317
200mm	1	11 122 318
225mm	1	11 122 319
250mm	1	11 122 320
315mm	1	11 122 323



TEE 90° – Swept

Size	Standard pack quantity	Product Part no.
32mm	10	11 148 308
50mm	10	11 148 310
63mm	5	11 148 311
75mm	1	01 148 108
110mm	1	11 148 314



TEE 90° – Reducing

Size	Standard pack quantity	Product Part no.
25 x 20	10	11 124 415
32 x 20	10	11 124 418
32 x 25	10	11 124 419
40 x 20	10	11 124 421
40 x 25	10	11 124 422
50 x 20	5	11 124 424
50 x 25	5	11 124 425
50 x 32	5	11 124 426
63 x 25	5	11 124 429
63 x 32	5	11 124 430
75 x 32	1	11 124 435
75 x 40	1	11 124 436
75 x 50	1	11 124 437
75 x 63	1	11 124 438
90 x 40	1	11 124 441
90 x 50	1	11 124 442
90 x 63	1	11 124 443
110 x 63	1	11 124 449
110 x 75	1	11 124 450



BEND 90°

Size	Standard pack quantity	Product Part no.
20mm	10	11 118 306
25mm	10	11 118 307
32mm	10	11 118 308
40mm	5	11 118 309
50mm	1	11 118 310
63mm	1	11 118 311
75mm	1	11 118 312
90mm	1	11 118 313
110mm	1	11 118 314

SuperFlo ABS

Metric solvent weld fittings

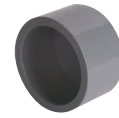


FABRICATED BEND 90° – Plain

Size	Standard pack quantity	Product Part no.
75mm*	1	11 309 312
125mm*	1	11 309 315
140mm*	1	11 309 316
160mm*	1	11 309 317
200mm*	1	11 309 318
225mm*	1	11 309 319

* Made to Order (Please refer to our Terms & Conditions)

Note: Special angled bends can be supplied to order: Angles between 0° and 90° – POA



CAP – Plain

Size	Standard pack quantity	Product Part no.
16mm	10	11 149 305
20mm	10	11 149 306
25mm	10	11 149 307
32mm	10	11 149 308
40mm	10	11 149 309
50mm	10	11 149 310
63mm	5	11 149 311
75mm	5	11 149 312
90mm	5	11 149 313
110mm	1	11 149 314



SOCKET UNION

Size	Standard pack quantity	Product Part no.
16mm	10	11 205 305
20mm	10	11 205 306
25mm	10	11 205 307
32mm	10	11 205 308
40mm	5	11 205 309
50mm	5	11 205 310
63mm	5	11 205 311
75mm	5	11 205 312
90mm	1	11 205 313
110mm	1	11 205 314

EPDM seal as standard



IMPERIAL/METRIC SOCKET ADAPTOR – Plain

Size	Standard pack quantity	Product Part no.
1/2" x 20mm	10	11 345 102
3/4" x 25mm	10	11 345 103
1" x 32mm	10	11 345 104
1 1/4" x 40mm	10	11 345 105
1 1/2" x 50mm	10	11 345 106
2" x 63mm	5	11 345 107
2 1/2" x 75mm	1	11 100 312
3" x 90mm	1	11 345 109
4" x 110mm	1	11 345 110
6" x 160mm	1	11 345 112



MALE THREADED ADAPTOR – BSP taper male thread

Size	Standard pack quantity	Product Part no.
16 x 12mm x 3/8"	10	11 151 331
20 x 16mm x 3/8"	10	11 151 332
20 x 16mm x 1/2"	10	11 151 333
20 x 16mm x 3/4"	10	11 151 327
25 x 20mm x 1/2"	10	11 151 334
25 x 20mm x 3/4"	10	11 151 335
32 x 25mm x 1/2"	10	11 151 352
32 x 25mm x 3/4"	10	11 151 336
32 x 25mm x 1"	10	11 151 337
40 x 32mm x 1"	10	11 151 338
40 x 32mm x 1 1/4"	10	11 151 339
50 x 40mm x 1 1/4"	5	11 151 340
50 x 40mm x 1 1/2"	5	11 151 341
63 x 50mm x 1 1/2"	5	11 151 342
63 x 50mm x 2"	5	11 151 343
75 x 63mm x 2"	5	11 151 345



FEMALE THREADED ADAPTOR – BSP taper female threaded reinforced

Size	Standard pack quantity	Product Part no.
16 x 12mm x 3/8"	10	11 153 331
20 x 16mm x 1/2"	10	11 153 333
25 x 20mm x 3/4"	10	11 153 335
32 x 25mm x 1"	10	11 153 337
40 x 32mm x 1 1/4"	5	11 153 339
50 x 40mm x 1 1/2"	5	11 153 341
63 x 50mm x 2"	5	11 153 343



HOSE ADAPTOR – Spigot end

Size	Standard pack quantity	Product Part no.
16mm	10	11 158 305
20mm	10	11 158 306
25mm	10	11 158 307
32mm	10	11 158 308



FEMALE COMPOSITE UNION – ABS/Brass, BSP parallel female

Size	Standard pack quantity	Product Part no.
16mm x 3/8"	10	11 216 305
20mm x 1/2"	10	11 222 306
25 mm x 3/4"	10	11 222 307
32mm x 1"	10	11 222 308
40mm x 1 1/4"	5	11 222 309
50mm x 1 1/2"	5	11 222 310
63mm x 2"	5	11 222 311

SuperFlo ABS

Metric solvent weld fittings



MALE COMPOSITE UNION – ABS/Brass, BSP taper male thread

Size	Standard pack quantity	Product Part no.
16mm x 3/8"	10	11 217 305
20mm x 1/2"	10	11 223 306
25 mm x 3/4"	10	11 223 307
32mm x 1"	10	11 223 308
40mm x 1 1/4"	5	11 223 309
50mm x 1 1/2"	5	11 223 310
63mm x 2"	5	11 223 311



SS FEMALE COMPOSITE UNION – ABS/Stainless Steel 316L, BSP parallel female

Size	Standard pack quantity	Product Part no.
20mm x 1/2"	10	11 218 306
25 mm x 3/4"	10	11 218 307
32mm x 1"	10	11 218 308
40mm x 1 1/4"	5	11 218 309
50mm x 1 1/2"	5	11 218 310
63mm x 2"	5	11 218 311



ABS FLEXIBLE BRAIDED HOSE* – Plain spigot x BSP

Size	Standard pack quantity	Product Part no.
20 1/2" x 300mm	1	11 450 306
25 3/4" x 300mm	1	11 450 307
32 1" x 300mm	1	11 450 308
20 1/2" x 600mm	1	11 451 306
25 3/4" x 600mm	1	11 451 307
32 1" x 600mm	1	11 451 308

* Made to Order (Please refer to our Terms & Conditions)



SS MALE COMPOSITE UNION – ABS/Stainless Steel 316L, BSP taper male

Size	Standard pack quantity	Product Part no.
20mm x 1/2"	10	11 219 306
25mm x 3/4"	10	11 219 307
32mm x 1"	10	11 219 308
40mm x 1 1/4"	5	11 219 309
50mm x 1 1/2"	5	11 219 310
63mm x 2"	5	11 219 311



STUB FLANGE – Serrated face

Size	Standard pack quantity	Product Part no.
16mm	10	11 135 305
20mm	10	11 135 306
25mm	10	11 135 307
32mm	10	11 135 308
40mm	10	11 135 309
50mm	5	11 135 310
63mm	5	11 135 311
75mm	5	11 135 312
90mm	1	11 135 313
110mm	1	11 135 314
125mm	1	11 135 315
140mm	1	11 135 316
160mm	1	11 135 317
200mm*	1	11 135 318
225mm	1	11 135 319
250mm	1	11 135 320
315mm	1	11 135 323

*The 200mm (NW175) stub flange when used in conjunction with backing ring Part no. number 421 318 and 420 318 has a bolt circle diameter which matches 225mm (NW200) valves and fittings (295mm)



BLANK FLANGE

Size	Standard pack quantity	Product Part no.
Drilled to EN1029 PN16 (formerly BS4504)		
32mm	5	11 323 308
40mm	5	11 323 309
50mm	5	11 323 310
63mm	5	11 323 311
75mm	5	11 323 312
90mm	1	11 323 313
110mm	1	11 323 314
125mm	1	11 323 315
140mm	1	11 323 316
160mm	1	11 323 317

Note: Backing rings must be used in conjunction with blank flanges

SuperFlo ABS

Metric solvent weld fittings & accessories



SOCKET UNION PLAIN ADAPTOR

Size	Standard pack quantity	Product Part no.
16mm	10	11 206 305
20mm	10	11 206 306
25mm	10	11 206 307
32mm	10	11 206 308
40mm	5	11 206 309
50mm	5	11 206 310
63mm	5	11 206 311



SOCKET UNION THREADED ADAPTOR

Size	Standard pack quantity	Product Part no.
25mm	10	11 207 307
32mm	10	11 207 308
40mm	5	11 207 309
50mm	5	11 207 310
63mm	5	11 207 311



SOCKET UNION NUT

Size	Standard pack quantity	Product Part no.
16mm	10	11 208 305
20mm	10	11 208 306
25mm	10	11 208 307
32mm	10	11 208 308
40mm	5	11 208 309
50mm	5	11 208 310
63mm	5	11 208 311



SOCKET END PLAIN

Size	Standard pack quantity	Product Part no.
20mm	10	92 878 306
25mm	10	92 878 307
32mm	10	92 878 308
40mm	5	92 878 309
50mm	5	92 878 310
63mm	5	92 878 311



BACKING RING – Galvanised mild steel

Size	Standard pack quantity	Product Part no.
Drilled to EN1029 PN10/PN16 (formerly BS4504)		
16mm	1	13 421 305
20mm	1	13 421 306
25mm	1	13 421 307
32mm	1	13 421 308
40mm	1	13 421 309
50mm	1	13 421 310
63mm	1	13 421 311
75mm	1	13 421 312
90mm	1	13 421 313
110mm	1	13 421 314
125mm	1	13 421 315
140mm	1	13 421 316
160mm	1	13 421 317
Drilled to EN1029 PN10 (formerly BS4504)		
200	1	13 421 318
225mm	1	13 421 319
250mm	1	13 421 320
315mm	1	13 421 323
Drilled to EN1029 PN16 (formerly BS4504)		
200mm	1	13 420 318
225mm	1	13 420 319
250mm	1	13 420 320
315mm	1	13 420 323
Drilled to ANSI CLASS 150		
20mm	1	13 448 306
25mm	1	13 448 307
32mm	1	13 448 308
40mm	1	13 448 309
50mm	1	13 448 310
63mm	1	13 448 311
75mm	1	13 448 312
90mm	1	13 448 313
110mm	1	13 448 314

*The 200mm (NW175) stub flange when used in conjunction with backing ring; Part no. number 421 318 and 420 318 has a bolt circle diameter which matches 225mm (NW200) valves and fittings (295mm)



FLAT GASKET/STUB FLANGE

Size	Standard pack quantity	Product Part no.
16mm	1	13 411 305
20mm	1	13 411 306
25mm	1	13 411 307
32mm	1	13 411 308
40mm	1	13 411 309
50mm	1	13 411 310
63mm	1	13 411 311
75mm	1	13 411 312
90mm	1	13 411 313
110mm	1	13 411 314
125mm	1	13 411 315
140mm	1	13 411 316
160mm	1	13 411 317
200mm	1	13 411 318
225mm	1	13 411 319
250mm	1	13 431 320
315mm	1	13 411 323



VALVE SUPPORT PLATE GALVANISED MILD STEEL

Size	Standard pack quantity	Product Part no.
16mm	1	31 459 305
20mm	1	31 459 306
25mm	1	31 459 307
32mm	1	31 459 308
50mm	1	31 459 310
63mm	1	31 459 311
75mm	1	31 459 312
90mm	1	31 459 313
110mm	1	31 459 314

SuperFlo ABS

Metric valves & accessories



VKD DOUBLE UNION BALL VALVE MANUAL - EPDM seal

Size	Standard pack quantity	Product Part no.
16mm	1	HO DKA 305
20mm	1	HO DKA 306
25mm	1	HO DKA 307
32mm	1	HO DKA 308
40mm	1	HO DKA 309
50mm	1	HO DKA 310
63mm	1	HO DKA 311

Note: FKM seals available on request



LOCKABLE VKD DOUBLE UNION BALL VALVE MANUAL - EPDM seal

Size	Standard pack quantity	Product Part no.
16mm	1	HO DLA 305
20mm	1	HO DLA 306
25mm	1	HO DLA 307
32mm	1	HO DLA 308
40mm	1	HO DLA 309
50mm	1	HO DLA 310
63mm	1	HO DLA 311

Note: FKM seals available on request



VKD DOUBLE UNION BALL VALVES MANUAL - EPDM seals

Size	Standard pack quantity	Product Part no.
75mm	1	HO DKA 312
90mm	1	HO DKA 313
110mm	1	HO DKA 314

Note: VKD ball valves are available with flanged ends (ISO-DIN) on request. Please order via Part no. HO DKA F**



TKD 3-WAY BALL VALVES T-PORT PLAIN FEMALE ENDS - EPDM seals

Size	Standard pack quantity	Product Part no.
20mm	1	HO TTA 306
25mm	1	HO TTA 307
32mm	1	HO TTA 308
40mm	1	HO TTA 309
50mm	1	HO TTA 310
63mm	1	HO TTA 311

TKD 3-WAY BALL VALVES T-PORT PLAIN FEMALE ENDS - EPDM seals

Size	Standard pack quantity	Product Part no.
20mm	1	HO LTA 306
25mm	1	HO LTA 307
32mm	1	HO LTA 308
40mm	1	HO LTA 309
50mm	1	HO LTA 310
63mm	1	HO LTA 311

Lockable Handle Option available upon request: Please order Part no. reference 'TLA'



VXE EASYFIT DOUBLE UNION BALL VALVES MANUAL - EPDM seals

Size	Standard pack quantity	Product Part no.
20mm	1	HO XEA 306
25mm	1	HO XEA 307
32mm	1	HO XEA 308
40mm	1	HO XEA 309
50mm	1	HO XEA 310
63mm	1	HO XEA 311

Note: FKM seals available on request



SET OF TRANSPARENT SERVICE PLUG AND WHITE PVC TAG HOLDER – For insertion in handle for VXE Easyfit valve customisation

Size	Standard pack quantity	Product Part no.
16–20mm / 1/2"	20	LCE020
25mm / 3/4"	20	LCE025
32mm / 1"	20	LCE032
40mm / 1 1/4"	20	LCE040
50mm / 1 1/2"	20	LCE050
63mm / 2"	20	LCE063

Note: FKM seals available on request



DIE CUT LABELS PLUS SOFTWARE – White waterproof A4 sheets and freeware editing software to be used with inkjet printers for VXE Easyfit valve customisation

Size	No. of sheets	Total labels	Product Part no.
16–20mm / 1/2"	10	500	LSE020
25mm / 3/4"	10	500	LSE025
32mm / 1"	10	500	LSE032
40mm / 1 1/4"	10	500	LSE040
50mm / 1 1/2"	10	400	LSE050
63mm / 2"	10	400	LSE063



VKR METERING BALL VALVE PLAIN FEMALE END - EPDM seal

Size	Standard pack quantity	Product Part no.
16mm	1	HO MBA 305
20mm	1	HO MBA 306
25mm	1	HO MBA 307
32mm	1	HO MBA 308
40mm	1	HO MBA 309
50mm	1	HO MBA 310
63mm	1	HO MBA 311

SuperFlo ABS

Metric valves & accessories



SX EASYFIT BALL CHECK VALVE PLAIN FEMALE END - EPDM seal

Size	Standard pack quantity	Product Part no.
20mm	1	H0 SXA 306
25mm	1	H0 SXA 307
32mm	1	H0 SXA 308
40mm	1	H0 SXA 309
50mm	1	H0 SXA 310
63mm	1	H0 SXA 311

SX ball check valve is also available with FKM seals



SX EASYFIT AIR RELEASE VALVES PLAIN FEMALE END - EPDM seal

Size	Standard pack quantity	Product Part no.
20mm	1	H0 SAA 306
25mm	1	H0 SAA 307
32mm	1	H0 SAA 308
40mm	1	H0 SAA 309
50mm	1	H0 SAA 310
63mm	1	H0 SAA 311

Note: FKM seals available on request



UV Y-TYPE STRAINER - Plain end - EPDM seal

Size	Standard pack quantity	Product Part no.
20mm	1	H0 UVA 306
25mm	1	H0 UVA 307
32mm	1	H0 UVA 308
40mm	1	H0 UVA 309
50mm	1	H0 UVA 310
63mm	1	H0 UVA 311

Note: FKM seals available on request



DIALOCK® DIAPHRAGM VALVE MANUAL - plain female end - EPDM

Size	Standard pack quantity	Product Part no.
20mm	1	H0 DVA 306
25mm	1	H0 DVA 307
32mm	1	H0 DVA 308
40mm	1	H0 DVA 309
50mm	1	H0 DVA 310
63mm	1	H0 DVA 311

FKM or PTFE seal options available upon request

Note: Larger Size available upon request.
(Minimum order quantity will apply)



LR PRESSURE LOADING/RELIEF VALVE - Plain Union End - EPDM Seal

Size	Standard pack quantity	Product Part no.
16mm	1	H0 LRA 305
20mm	1	H0 LRA 306
25mm	1	H0 LRA 307
32mm	1	H0 LRA 308
40mm	1	H0 LRA 309
50mm	1	H0 LRA 310
63mm	1	H0 LRA 311

FKM or PTFE seal options available upon request



FK BUTTERFLY VALVE - Glass reinforced Polypropylene with ABS disc, EPDM liner. Lever operated

Size	Standard pack quantity	Product Part no.
50mm	1	H0 FKA 106
63mm	1	H0 FKA 107
75mm	1	H0 FKA 108
90mm	1	H0 FKA 109
110mm	1	H0 FKA 110
140mm	1	H0 FKA 111
160mm	1	H0 FKA 112
225mm	1	H0 FKA 113

Note: FKM Liner available on request



FK BUTTERFLY VALVE - with gear box

Size	Standard pack quantity	Product Part no.
75mm	1	HV FKA 108
90mm	1	HV FKA 109
110mm	1	HV FKA 110
140mm	1	HV FKA 111
160mm	1	HV FKA 112
225mm	1	HV FKA 113
250mm	1	HV FKA 114
315mm	1	HV FKA 115

Note: FKM Liner available on request

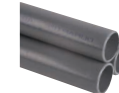


RUBBER LINED PIPE CLIP

Size	Thread	Standard pack quantity	Product Part no.
16mm	M10	50	FT PC 1600
20mm	M10	50	FT PC 2000
25mm	M10	50	FT PC 2500
32mm	M10	50	FT PC 3200
40mm	M10	50	FT PC 4000
50mm	M10	50	FT PC 5000
63mm	M10	50	FT PC 6300
75mm	M10	50	FT PC 7500
90mm	M10	50	FT PC 9000
110mm	M10	50	FT PC 1100
160mm	M10	50	FT PC 1601

SuperFlo ABS

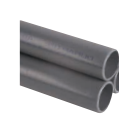
Imperial pipe & solvent weld fittings



PIPE - ABS Class C (9 bar)

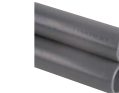
Pipe diameter	Standard length in metres	Product Part no.
1"	6	01 511 104
1 1/4"	6	01 511 105
1 1/2"	6	01 511 106
2"	6	01 511 107
2 1/2"	6	11 551 312
3"	6	01 511 109
4"	6	01 511 110
5"	6	11 551 316
6"	6	01 511 112
8"	6	01 511 113

Note: 2 1/2" and 5" pipes are 10 bar rated.



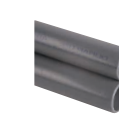
PIPE - ABS Class D (12 bar)

Pipe diameter	Standard length in metres	Product Part no.
6"	6	01 512 112



PIPE - ABS Class E (15 bar)

Pipe diameter	Standard length in metres	Product Part no.
1/2"	6	01 513 102
3/4"	6	01 513 103
1"	6	01 513 104
1 1/4"	6	01 513 105
1 1/2"	6	01 513 106
2"	6	01 513 107
3"	6	01 513 109
4"	6	01 513 110



PIPE - ABS Class T for threading (12 bar after threading)

Size	Standard pack quantity	Product Part no.
1/2"	6	01 514 102
3/4"	6	01 514 103
1"	6	01 514 104
1 1/4"	6	01 514 105
1 1/2"	6	01 514 106
2"	6	01 514 107



SOCKET PLAIN

Size	Standard pack quantity	Product Part no.
1/2"	10	01 100 102
3/4"	10	01 100 103
1"	10	01 100 104
1 1/4"	10	01 100 105
1 1/2"	10	01 100 106
2"	5	01 100 107
2 1/2"	1	11 100 312
3"	1	01 100 109
4"	1	01 100 110
5"	1	11 100 316
6"	1	01 100 112
8"	1	01 100 113



REDUCING SOCKET - Plain

Size	Standard pack quantity	Product Part no.
3/4 x 1/2"	10	01 114 122
1 x 3/4"	10	01 114 124
1 1/4 x 1"	10	01 114 125
1 1/2 x 1 1/4"	10	01 114 127
2 x 1 1/2"	5	01 114 130
3 x 2"	1	01 114 135
4 x 3"	1	01 114 141
6 x 4"	1	01 114 147
6 x 5"	1	01 329 148
8 x 6"	1	01 109 152



REDUCING BUSH - Plain

Size	Standard pack quantity	Product Part no.
3/4 x 1/2"	10	01 109 122
1 x 1/2"	10	01 109 123
1 x 3/4"	10	01 109 124
1 1/4 x 1/2"	10	01 109 116
1 1/4 x 3/4"	10	01 109 117
1 1/4 x 1"	10	01 109 125
1 1/2 x 1/2"	10	01 109 118
1 1/2 x 3/4"	10	01 109 119
1 1/2 x 1"	10	01 109 126
1 1/2 x 1 1/4"	10	01 109 127
2 x 3/4"	10	01 109 120
2 x 1"	10	01 109 128
2 x 1 1/4"	10	01 109 129
2 x 1 1/2"	10	01 109 130
2 1/2 x 2"	5	01 109 131
3 x 1 1/2"	5	01 109 134
3 x 2"	5	01 109 135
3 x 2 1/2"	5	01 109 136
4 x 3"	1	01 109 141
5 x 4"	1	01 329 142
6 x 4"	1	01 109 147
6 x 5"	1	01 329 148
8 x 6"	1	01 109 152

SuperFlo ABS

Imperial solvent weld fittings



ELBOW 45° – Plain

Size	Standard pack quantity	Product Part no.
1/2"	10	01 119 102
3/4"	10	01 119 103
1"	10	01 119 104
1 1/4"	10	01 119 105
1 1/2"	10	01 119 106
2"	5	01 119 107
2 1/2"	1	11 119 312
3"	1	01 119 109
4"	1	01 119 110
5"	1	11 119 316
6"	1	01 119 112
8"	1	01 119 113



ELBOW 90° – Plain

Size	Standard pack quantity	Product Part no.
1/2"	10	01 115 102
3/4"	10	01 115 103
1"	10	01 115 104
1 1/4"	10	01 115 105
1 1/2"	10	01 115 106
2"	5	01 115 107
2 1/2"	1	11 115 312
3"	1	01 115 109
4"	1	01 115 110
5"	1	11 115 316
6"	1	01 115 112
8"	1	01 115 113



TEE 45° – Plain

Size	Standard pack quantity	Product Part no.
1/2"	5	01 128 102
3/4"	5	01 128 103
1"	5	01 128 104
1 1/4"	5	01 128 105
1 1/2"	5	01 128 106
2"	1	01 128 107



TEE 90° – Plain

Size	Standard pack quantity	Product Part no.
1/2"	10	01 122 102
3/4"	10	01 122 103
1"	10	01 122 104
1 1/4"	10	01 122 105
1 1/2"	5	01 122 106
2"	5	01 122 107
2 1/2"	1	11 122 312
3"	1	01 122 109
4"	1	01 122 110
5"	1	11 122 316
6"	1	01 122 112
8"	1	01 122 113



TEE 90° SWEPT - Plain

Size	Standard pack quantity	Product Part no.
1"	10	01 148 104
1 1/2"	5	01 148 106
2"	5	01 148 107
2 1/2"	1	01 148 108
4"	1	01 148 110



TEE 90° - Reducing

Size	Standard pack quantity	Product Part no.
3/4" x 1/2"	5	01 124 122
1" x 1/2"	5	01 124 123
1" x 3/4"	5	01 124 124



BEND 22 1/2° – Long radius

Size	Standard pack quantity	Product Part no.
1"	1	01 311 104
1 1/2"	1	01 311 106
2"	1	01 311 107
2 1/2"	1	11 311 312
3"	1	01 311 109
4"	1	01 311 110
5"	1	11 311 316
6"	1	01 311 112
8"	1	01 311 113

* Made to Order (Please refer to our Terms & Conditions)

Note: Special angled bends can be supplied by order: Angles between 0° and 90° – POA



BEND 45° – Long radius

Size	Standard pack quantity	Product Part no.
1"	1	01 310 104
1 1/2"	1	01 310 106
2"	1	01 310 107
2 1/2"	1	11 310 312
3"	1	01 310 109
4"	1	01 310 110
5"	1	11 310 316
6"	1	01 310 112
8"	1	01 310 113

SuperFlo ABS

Imperial solvent weld fittings



BEND 90° – Long radius

Size	Standard pack quantity	Product Part no.
3"	1	01 309 109
4"	1	01 309 110
5"	1	11 309 316
6"	1	01 309 112
8"	1	01 309 113



BEND 90° – Short radius

Size	Standard pack quantity	Product Part no.
1/2"	10	01 118 103
1"	10	01 118 104
1 1/4"	5	01 118 105
1 1/2"	1	01 118 106
2"	1	01 118 107
2 1/2"	1	11 118 312
3"	1	01 118 109
4"	1	01 118 110



SADDLE - Plain

Size	Standard pack quantity	Product Part no.
2 x 1 1/4"	10	01 126 129
3 x 1 1/2"	1	01 126 134
4 x 2"	1	01 126 140
6 x 2"	1	01 126 146



END CAP - Plain

Size	Standard pack quantity	Product Part no.
1/2"	10	01 140 102
3/4"	10	01 140 103
1"	10	01 140 104
1 1/4"	10	01 140 105
1 1/2"	10	01 140 106
2"	5	01 140 107
2 1/2"	5	11 149 312
3"	5	01 140 109
4"	1	01 140 110



SOCKET UNION – Plain EPDM

Size	Standard pack quantity	Product Part no.
1/2"	10	01 205 102
3/4"	10	01 205 103
1"	10	01 205 104
1 1/4"	5	01 205 105
1 1/2"	5	01 205 106
2"	5	01 205 107
2 1/2"	5	11 205 312
3"	1	01 205 109
4"	1	01 205 110



SOCKET UNION – Plain FKM

Size	Standard pack quantity	Product Part no.
1/2"	10	01 204 103
3/4"	10	01 204 104
1"	5	01 204 105
1 1/4"	5	01 204 106
1 1/2"	5	01 204 107
2"	5	11 204 312
2 1/2"	1	01 204 109
3"	1	01 204 110
4"	1	01 205 110

3" and 4" are class C rated. 2 1/2" is PN10 rated. EPDM seal as standard



IMPERIAL/METRIC SOCKET ADAPTOR – Plain

Size	Standard pack quantity	Product Part no.
1/2" x 20	10	11 345 102
3/4" x 25	10	11 345 103
1" x 32	10	11 345 104
1 1/4" x 40	10	11 345 105
1 1/2" x 50	10	11 345 106
2" x 63	5	11 345 107
2 1/2" x 75	1	11 100 312
3" x 90	1	11 345 109
4" x 110	1	11 345 110
6" x 160	1	11 345 112



SOCKET – Plain/female BSP thread

Size	Standard pack quantity	Product Part no.
1/2"	10	01 101 102
3/4"	10	01 101 103
1"	10	01 101 104
1 1/4"	10	01 101 105
1 1/2"	10	01 101 106
2"	5	01 101 107
3"	1	01 101 109

SuperFlo ABS

Imperial solvent weld fittings



REDUCING BUSH – Plain/female BSP thread

Size	Standard pack quantity	Product Part no.
3/4" x 1/2"	10	01 111 121
1" x 1/2"	10	01 111 122
1" x 3/4"	10	01 111 124



ELBOW 90° – Plain/female BSP thread

Size	Standard pack quantity	Product Part no.
1/2"	10	01 116 102
3/4"	10	01 116 103
1"	10	01 116 104
1 1/2"	5	01 116 106
2"	5	01 116 107



MALE THREADED ADAPTOR – Plain/female BSP thread

Size	Standard pack quantity	Product Part no.
1/2"	10	01 151 102
3/4"	10	01 151 103
1"	10	01 151 104
1 1/4"	10	01 151 105
1 1/2"	5	01 151 106
2"	5	01 151 107



FEMALE THREADED ADAPTOR – Plain spigot end/female BSP thread

Size	Standard pack quantity	Product Part no.
1/2"	10	01 153 102
3/4"	10	01 153 103
1"	10	01 153 104
1 1/4"	10	01 153 105
1 1/2"	5	01 153 106
2"	5	01 153 107



HEXAGON NIPPLE – Plain spigot/male BSP thread

Size	Standard pack quantity	Product Part no.
1/2"	10	01 107 102
3/4"	10	01 107 103
1"	10	01 107 104
1 1/4"	10	01 107 105
1 1/2"	5	01 107 106
2"	5	01 107 107



BARREL NIPPLE – Plain spigot/male BSP thread

Size	Standard pack quantity	Product Part no.
1/2"	1	01 316 102
3/4"	1	01 316 103
1"	1	01 316 104
1 1/4"	1	01 316 105
1 1/2"	1	01 316 106
2"	1	01 316 107
2 1/2"	1	01 316 108
3"	1	01 316 109
4"	1	01 316 110



HOSE ADAPTOR – Male BSP thread/hose tail

Size	Standard pack quantity	Product Part no.
1/2"	10	01 157 102
3/4"	10	01 157 103
1"	10	01 157 104



TANK CONNECTOR – Plain spigot/male BSP thread

Size	Standard pack quantity	Product Part no.
1/2"	10	01 235 102
3/4"	10	01 235 103
1"	10	01 235 104
1 1/4"	10	01 235 105
1 1/2"	10	01 235 106
2"	5	01 235 107
2 1/2"	1	01 235 108
3"	1	01 235 109
4"	1	01 235 110

SuperFlo ABS

Imperial solvent weld fittings



COMPOSITE UNION – Plain/brass female parallel BSP thread

Size	Standard pack quantity	Product Part no.
1/2"	10	01 222 102
3/4"	10	01 222 103
1"	10	01 222 104
1 1/4"	5	01 222 105
1 1/2"	5	01 222 106
2"	5	01 222 107



COMPOSITE UNION – Plain/brass taper male BSP thread

Size	Standard pack quantity	Product Part no.
1/2"	10	01 223 102
3/4"	10	01 223 103
1"	10	01 223 104
1 1/4"	5	01 223 105
1 1/2"	5	01 223 106
2"	5	01 223 107



SS FEMALE COMPOSITE UNION – ABS/Stainless Steel 316L, BSP parallel female

Size	Standard pack quantity	Product Part no.
1/2"	10	01 218 102
3/4"	10	01 218 103
1"	10	01 218 104
1 1/4"	5	01 218 105
1 1/2"	5	01 218 106
2"	5	01 218 107



SS MALE COMPOSITE UNION – ABS/Stainless Steel 316L, BSP taper male

Size	Standard pack quantity	Product Part no.
1/2"	10	01 219 102
3/4"	10	01 219 103
1"	10	01 219 104
1 1/4"	5	01 219 105
1 1/2"	5	01 219 106
2"	5	01 219 107



SOCKET – Female BSP thread

Size	Standard pack quantity	Product Part no.
1/2"	10	01 102 102
1"	10	01 102 103
1 1/4"	10	01 102 104
1 1/2"	10	01 102 105
2"	10	01 102 106
2 1/2"	5	01 102 107
3"	1	01 102 109



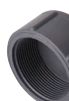
REDUCING BUSH – Male/female BSP thread

Size	Standard pack quantity	Product Part no.
1/2" x 3/8"	10	01 113 121
3/4" x 1/2"	10	01 113 122
1" x 3/4"	10	01 113 124



ELBOW 90° – Female BSP thread

Size	Standard pack quantity	Product Part no.
1/2"	10	01 117 102
3/4"	10	01 117 103
1"	10	01 117 104
1 1/2"	5	01 117 106
2"	5	01 117 107



END CAP – Female BSP thread

Size	Standard pack quantity	Product Part no.
1/2"	10	01 141 102
1"	10	01 141 103
1 1/4"	10	01 141 104
1 1/2"	10	01 141 105
2"	10	01 141 106
2 1/2"	5	01 141 107
3"	1	01 141 109

SuperFlo ABS

Imperial solvent weld fittings



PLUG – Male BSP thread

Size	Standard pack quantity	Product Part no.
½"	10	01 155 102
¾"	10	01 155 103
1"	10	01 155 104
1¼"	10	01 155 105
1½"	10	01 155 106
2"	10	01 155 107



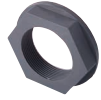
HEXAGON NIPPLE – Male BSP thread

Size	Standard pack quantity	Product Part no.
½"	10	01 106 102
¾"	10	01 106 103
1"	10	01 106 104
1¼"	10	01 106 105
1½"	5	01 106 106
2"	5	01 106 107



FLANGE STUB – Plain/serrated

Size	Standard pack quantity	Product Part no.
2"	5	01 135 107
2½"	5	11 135 312
3"	1	01 135 109
4"	1	01 135 110
5"	1	11 135 316
6"	1	01 135 112
8"	1	01 135 113



BACK NUT – Female BSP thread

Size	Standard pack quantity	Product Part no.
½"	10	01 159 102
¾"	10	01 159 103
1"	10	01 159 104
1¼"	10	01 159 105
1½"	10	01 159 106
2"	10	01 159 107
2½"	10	01 159 108
3"	10	01 159 109
4"	10	01 159 110



FULL FACE FLANGE – Undrilled

Size	Standard pack quantity	Product Part no.
Undrilled		
½"	10	01 129 102
¾"	10	01 129 103
1"	10	01 129 104
1¼"	5	01 129 105
1½"	5	01 129 106
2"	5	01 129 107
3"	1	01 129 109
4"	1	01 129 110
6"	1	01 129 112

Note: It is essential that backing rings are used with all types of stub, full face and blanking flanges



FULL FACE FLANGE – drilled

Size	Standard pack quantity	Product Part no.
Drilled to BS 10:1962 Table D/E		
½"	10	01 130 102
¾"	10	01 130 103
1"	10	01 130 104
1¼"	5	01 130 105
1½"	5	01 130 106
2"	5	01 130 107
3"	1	01 130 109
4"	1	01 130 110
6"	1	01 130 112
Drilled to BS EN1092-1, PN16 (Formerly BS 4504)**		
½"	10	01 319 102
¾"	10	01 319 103
1"	10	01 319 104
1¼"	5	01 319 105
1½"	5	01 319 106
2"	5	01 319 107
3"	1	01 319 109
4"	1	01 319 110
6"	1	01 319 112
Drilled to ANSI Class 150		
½"	10	01 322 102
¾"	10	01 322 103
1"	10	01 322 104
1¼"	5	01 322 106
1½"	5	01 322 107
2"	5	01 322 109
3"	1	01 322 110
4"	1	01 322 112

*For table D drilling, use order Part no. 01 317 110

**Also matches PN10 drillings



FULL FACE GASKET – Drilled EPDM

410/408/426

Size	Standard pack quantity	Product Part no.
Drilled to BS 10:1962 Table D/E		
½"	1	03 410 102
¾"	1	03 410 103
1"	1	03 410 104
1¼"	1	03 410 105
1½"	1	03 410 106
2"	1	03 410 107
3"	1	03 410 109
4"	1	03 410 110
6"	1	03 410 112
Drilled to BS EN1092-1, PN16 (Formerly BS 4504)		
Section 3.1:1989 table 10 & 11		
½"	1	03 408 102
¾"	1	03 408 103
1"	1	03 408 104
1¼"	1	03 408 105
1½"	1	03 408 106
2"	1	03 408 107
3"	1	03 408 109
4"	1	03 408 110
6"	1	03 408 112
Drilled to ANSI class 150		
½"	1	03 426 102
¾"	1	03 426 103
1"	1	03 426 104
1¼"	1	03 426 106
1½"	1	03 426 107
2"	1	03 426 109
3"	1	03 426 110
4"	1	03 426 112
6"	1	03 426 112

Also matches PN10 drillings

*Order Part no. 409 for Table D drilling

SuperFlo ABS

Imperial accessories



BACKING RING – Galvanised Mild Steel

Size	Standard pack quantity	Product Part no.
Drilled to BS 10:1962 Table D/E		
½"	1	03 416 102
¾"	1	03 416 103
1"	1	03 416 104
1¼"	1	03 416 105
1½"	1	03 416 106
2"	1	03 416 107
3"	1	03 416 109
4"	1	03 416 110
6"	1	03 416 112
Drilled to BS EN1092-1, PN16 (Formerly BS 4504)		
Section 3.1:1989 Tables 10 & 11		
½"	1	03 421 102
¾"	1	03 421 103
1"	1	03 421 104
1¼"	1	03 421 105
1½"	1	03 421 106
2"	1	13 421 311
2½"	1	13 421 312
3"	1	13 421 313
4"	1	03 421 110
5"	1	13 421 316
6"	1	03 421 112
8"	1	03 421 113

*For table D drilling, use order Part no. 03 415 110

** ½" to 6" also matches PN10 drillings



BACKING RING – Galvanised Mild Steel

Size	Standard pack quantity	Product Part no.
Drilled to BS EN1092-1, PN10 (Formerly BS 4504)		
Section 3.1:1989 Tables 10 & 11 *		
8"	1	03 404 113
Drilled to ANSI Class 150		
½"	1	03 425 102
¾"	1	03 425 103
1"	1	03 425 104
1½"	1	03 425 106
2"	1	03 425 107
3"	1	03 425 109
4"	1	03 425 110
6"	1	03 425 112
8"	1	03 425 113

* The PN10 8" drilling has 8 holes (8" PN16 has 12 holes) and therefore is compatible with the FK 8" butterfly valve

** Made to Order (Please refer to our Terms & Conditions)



BLANKING FLANGE – Undrilled

Size	Standard pack quantity	Product Part no.
Undrilled		
1"	10	01 131 104
1½"	5	01 131 106
2"	5	01 131 107
3"	1	01 131 109
4"	1	01 131 110
6"	1	01 131 112
8"	1	01 131 113

Note: It is essential that backing rings are used with all blanking flanges



BLANKING FLANGE – Drilled

Size	Standard pack quantity	Product Part no.
Drilled to BS 10:1962 Table D/E		
2"	5	01 313 107
3"	1	01 313 109
4"	1	01 313 110
6"	1	01 313 112
8"	1	01 313 113
Drilled to BS EN1092-1, PN16 (Formerly BS 4504)		
2"	5	01 323 107
2½"	5	11 323 312
3"	1	01 323 109
4"	1	01 323 110
5"	1	11 323 316
6"	1	01 323 112
8"	1	01 323 113
Drilled to ANSI Class 150		
2"	5	01 325 107
3"	1	01 325 109
4"	1	01 325 110
6"	1	01 325 112
8"	1	01 325 113

*For table D drilling, use order Part no. 01 326 110

** Also matches PN10 drilling



FLAT GASKET – EPDM, for use with stub flange

Size	Standard pack quantity	Product Part no.
2"	1	03 431 107
2½"	1	13 411 312
3"	1	03 431 109
4"	1	03 431 110
5"	1	13 411 316
6"	1	03 431 112
8"	1	03 431 113

For use with stub flanges 135/139)



VALVE SUPPORT PLATE – Galvanised mild steel, drilled

Size	Standard pack quantity	Product Part no.
Drilled to BS EN1029-1, PN10/PN16 (Formerly BS 4504)		
½"	1	03 458 102
¾"	1	03 458 103
1"	1	03 458 104
1¼"	1	03 458 105
1½"	1	03 458 106
2"	1	03 458 107
2½"	1	31 459 312
3"	1	03 458 109
4"	1	03 458 110
6"	1	03 458 112
8"	1	03 458 113

* Also matches PN10 drillings

SuperFlo ABS

Imperial valves & accessories



O-RING SEAL - For use with socket union

Size	Standard pack quantity	Product Part no.
EPDM for use with 205 series socket unions		
1/2"	1	03 209 102
3/4"	1	03 209 103
1"	1	03 209 104
1 1/4"	1	13 209 309
1 1/2"	1	13 209 310
2"	1	03 306 107
2 1/2"	1	13 209 312
3"	1	03 209 109
4"	1	03 209 110
FKM for use with 204 series socket unions		
1/2"	1	03 211 102
3/4"	1	03 211 103
1"	1	03 211 104
1 1/4"	1	03 211 105
1 1/2"	1	03 211 106
2"	1	03 211 107
2 1/2"	1	13 211 312
3"	1	03 211 109
4"	1	03 211 110



VKD DOUBLE UNION BALL VALVE MANUAL BS PLAIN FEMALE END - EPDM seal

Size	Standard pack quantity	Product Part no.
1/2"	1	H0 DKA 102
3/4"	1	H0 DKA 103
1"	1	H0 DKA 104
1 1/4"	1	H0 DKA 105
1 1/2"	1	H0 DKA 106
2"	1	H0 DKA 107

Note: FKM seals available on request



LOCKABLE VKD DOUBLE UNION BALL VALVE MANUAL LOCKING HANDLE BS PLAIN FEMALE END - EPDM seal

Size	Standard pack quantity	Product Part no.
1/2"	1	H0 DLA 102
3/4"	1	H0 DLA 103
1"	1	H0 DLA 104
1 1/4"	1	H0 DLA 105
1 1/2"	1	H0 DLA 106
2"	1	H0 DLA 107

Note: FKM seals available on request



VKD DOUBLE UNION BALL VALVE MANUAL BS PLAIN FEMALE END - EPDM seal

Size	Standard pack quantity	Product Part no.
2 1/2"	1	H0 DKA 312
3"	1	H0 DKA 109
4"	1	H0 DKA 110

Note: VKD ball valves are available with flanged ends (ISO-DIN) on request. Order via Part no. H0 DKA F**



TKD 3-WAY BALL VALVE T-PORT BS SERIES, PLAIN FEMALE END - EPDM seal

Size	Standard pack quantity	Product Part no.
1/2"	1	H0 TTA 102
3/4"	1	H0 TTA 103
1"	1	H0 TTA 104
1 1/4"	1	H0 TTA 105
1 1/2"	1	H0 TTA 106
2"	1	H0 TTA 107

Lockable Handle Option available upon request: Please order Part no. reference 'TLA'



TKD 3-WAY BALL VALVE L-PORT BS SERIES, PLAIN FEMALE END - EPDM seal

Size	Standard pack quantity	Product Part no.
1/2"	1	H0 LTA 102
3/4"	1	H0 LTA 103
1"	1	H0 LTA 104
1 1/4"	1	H0 LTA 105
1 1/2"	1	H0 LTA 106
2"	1	H0 LTA 107

Lockable Handle Option available upon request: Please order Part no. reference 'LLA'



VXE EASYFIT DOUBLE UNION BALL VALVES BS PLAIN FEMALE END - EPDM seal

Size	Standard pack quantity	Product Part no.
1/2"	1	H0 XEA 102
3/4"	1	H0 XEA 103
1"	1	H0 XEA 104
1 1/4"	1	H0 XEA 105
1 1/2"	1	H0 XEA 106
2"	1	H0 XEA 107

Note: FKM seals available on request

SuperFlo ABS

Imperial valves & accessories



SET OF TRANSPARENT SERVICE PLUGS AND WHITE PVC TAG HOLDER - For insertion in handle for VXE Easyfit valve customisation

Size	Standard pack quantity	Product Part no.
16-20mm / 1/2"	20	LCE020
25mm / 3/4"	20	LCE025
32mm / 1"	20	LCE032
40mm / 1 1/4"	20	LCE040
50mm / 1 1/2"	20	LCE050
63mm / 2"	20	LCE063



DIE CUT LABELS PLUS SOFTWARE - White waterproof A4 sheets and freeware editing software to be used with inkjet printers for VXE Easyfit valve customisation

Size	No. of sheets	Total labels	Product Part no.
16-20mm / 1/2"	10	500	LSE020
25mm / 3/4"	10	500	LSE025
32mm / 1"	10	500	LSE032
40mm / 1 1/4"	10	500	LSE040
50mm / 1 1/2"	10	400	LSE050
63mm / 2"	10	400	LSE063



VKR METERING BALL VALVE BS PLAIN FEMALE END - EPDM seal

Size	Standard pack quantity	Product Part no.
3/8"	1	H0 MBA 101
1/2"	1	H0 MBA 102
3/4"	1	H0 MBA 103
1"	1	H0 MBA 104
1 1/4"	1	H0 MBA 105
1 1/2"	1	H0 MBA 106
2"	1	H0 MBA 107

All VKD, TKD Ball valves are also available with FKM seals



SX EASYFIT BALL CHECK VALVE BS PLAIN FEMALE END - EPDM seal

Size	Standard pack quantity	Product Part no.
1/2"	1	H0 SXA 102
3/4"	1	H0 SXA 103
1"	1	H0 SXA 104
1 1/4"	1	H0 SXA 105
1 1/2"	1	H0 SXA 106
2"	1	H0 SXA 107

Note: FKM seals available on request



SX EASYFIT AIR RELEASE VALVE BS PLAIN FEMALE END - EPDM seal

Size	Standard pack quantity	Product Part no.
1/2"	1	H0 SAA 102
3/4"	1	H0 SAA 103
1"	1	H0 SAA 104
1 1/4"	1	H0 SAA 105
1 1/2"	1	H0 SAA 106
2"	1	H0 SAA 107

Note: FKM seals available on request



UV Y-TYPE STRAINERS PLAIN FEMALE END - EPDM seal

Size	Standard pack quantity	Product Part no.
1/2"	1	H0 UVA 102
3/4"	1	H0 UVA 103
1"	1	H0 UVA 104
1 1/4"	1	H0 UVA 105
1 1/2"	1	H0 UVA 106
2"	1	H0 UVA 107

Note: FKM seals available on request



DIALOCK® DIAPHRAGM VALVE MANUAL - plain female ends - EPDM seal

Size	Standard pack quantity	Product Part no.
1/2"	1	H0 DVA 102
3/4"	1	H0 DVA 103
1"	1	H0 DVA 104
1 1/4"	1	H0 DVA 105
1 1/2"	1	H0 DVA 106
2"	1	H0 DVA 107

Larger Size available upon request. Minimum order quantities apply.

FKM or PTFE seal options available on request



LR PRESSURE LOADING/RELIEF VALVES PLAIN FEMALE END - EPDM seal

Size	Standard pack quantity	Product Part no.
1/2"	1	H0 LRA 102
3/4"	1	H0 LRA 103
1"	1	H0 LRA 104
1 1/4"	1	H0 LRA 105
1 1/2"	1	H0 LRA 106
2"	1	H0 LRA 107

FKM or PTFE seal options available on request

SuperFlo ABS

Imperial valves & accessories



FK BUTTERFLY VALVE – With Lever Handle – EPDM Seal

Size	Standard pack quantity	Product Part no.
1 1/2"	1	H0 FKA 106
2"	1	H0 FKA 107
2 1/2"	1	H0 FKA 108
3"	1	H0 FKA 109
4"	1	H0 FKA 110
5"	1	H0 FKA 111
6"	1	H0 FKA 112
8"	1	H0 FKA 113

FK Butterfly valves are also available with FKM seals, please ask for details



FK BUTTERFLY VALVE – With gear box – EPDM Seal

Size	Standard pack quantity	Product Part no.
2 1/2"	1	HV FKA 108
3"	1	HV FKA 109
4"	1	HV FKA 110
5"	1	HV FKA 111
6"	1	HV FKA 112
8"	1	HV FKA 113
10"	1	HV FKA 114
12"	1	HV FKA 115

FK Butterfly valves are also available with FKM seals, please ask for details



SADDLE CLIP – Polypropylene

Size	Standard pack quantity	Product Part no.
16 3/8"	10	03 455 101
20 1/2"	10	03 455 102
25 3/4"	10	03 455 103
32/1"	10	03 455 104
40/1 1/4"	10	03 455 105
50/1 1/2"	10	03 455 106
63/2"	10	03 455 107
16/3"	10	03 455 109
110/4"	10	03 455 110



COBRA PIPE CLIP

Size	Standard pack quantity	Product Part no.
*12"	10	13 434 304
*16 3/8"	10	13 434 305
*20 1/2"	10	13 434 306
*25 3/4"	10	13 434 307
32/1"	10	13 434 308
40/1 1/4"	10	13 434 309
50/1 1/2"	10	13 434 310
63/2"	10	13 434 311
75/2 1/2"	10	13 434 312
90/3"	10	13 434 313
110/4"	10	13 434 314
125"	10	13 434 315
140/5"	10	13 434 316
160/6"	10	13 434 317

*Without retaining clips. Bolts/screws not supplied



CHAMFERING AND DE-BURRING TOOL

Description	Product Part no.
16-63mm pipe chamfering tool	FT 55 65 12
75-160mm chamfering tool	FT 55 05 10



PIPE CUTTER

Description	Product Part no.
16-63mm pipe cutter	FT 80 00 01
50-125mm pipe cutter	FT 80 00 03
16-63mm spare cutter wheel	FT 80 00 02
50-125mm spare cutter wheel	FT 80 00 04



SUPERFLO ONE-STEP SOLVENT CEMENT AND ECO-CLEANER

Description	Standard pack quantity	Product Part no.
500ml SuperFLO grey one-step cement	12	03 461 395
1 litre SuperFLO grey one-step cement	6	03 461 396



KOLMAT FIBRESEAL – For threaded connections

Description	Product Part no.
FibreSeal tape	03 469 395



SILICONE REPAIR TAPE

Description	Product Part no.
Silicone Repair Tape	03 469 400

Why choose plastic pipe systems?

Plastic pipes have been at the centre of the clean water revolution since their introduction in the mid-20th century.

Ever since, significant benefits over traditional materials have been realised, and the popularity of plastic pipe systems have grown rapidly.

Plastic pipes are not only an excellent choice for transporting water, their characteristics are also ideal for a wide range of industrial applications.



Lightweight, easy to install



Reduced biofilm build-up



Lowers the risk of theft



Faster installation



Corrosion resistant



Cost effective



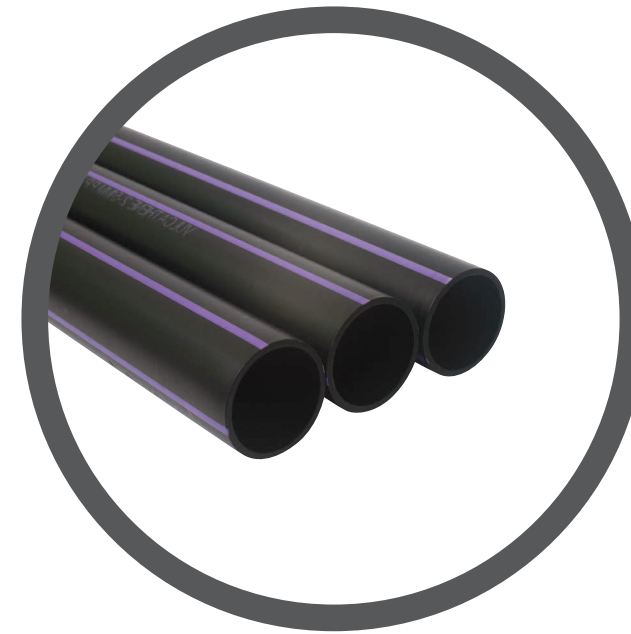
No hot-works required



A sustainable solution



Vulcathene



Vulcathene

Pipe, bench products and ancillaries



PIPE

Nominal Internal Pipe Diameter (mm)	Standard Length (m)	Catalogue number	Product Part no.
38	4	W001	V41 0310
51	4	W001	V41 0320
76	4	W001	V41 0330
102	4	W001	V41 0340
152	4	W001	V41 0360



WASTE

Size (inch x mm x mm)	Pack qty	Catalogue number	Product Part no.
UNSLOTTED			
1¼ x 60 dia. x 89	10	504	V5 504 011
1¼ x 73 dia. x 102	10	504	V5 504 031
1¼ x 85 dia. x 102	10	504	V5 504 051
1½ x 60 dia. x 89	10	504	V5 504 071
1½ x 73 dia. x 102	10	504	V5 504 091
1½ x 85 dia. x 102	10	504	V5 504 111
2 x 85 dia. x 102	10	504	V5 504 131
SLOTTED			
1¼ x 60 dia. x 89	10	504	V5 504 021
1¼ x 73 dia. x 102	10	504	V5 504 041
1¼ x 85 dia. x 102	10	504	V5 504 061
1½ x 60 dia. x 89	10	504	V5 504 081
1½ x 73 dia. x 102	10	504	V5 504 101
1½ x 85 dia. x 102	10	504	V5 504 121
2 x 85 dia. x 102	10	504	V5 504 141



STANDING WASTE TUBE

Size (mm)	Pack quantity	Catalogue number	Product Part no.
32 x 140*	25	507	V5 507 011
32 x 178*	25	507	V5 507 031
38 x 140	25	507	V5 507 051
38 x 178	25	507	V5 507 071
51 x 225*	10	507	V5 507 091
FITTED WITH HANGING LOOP			
32 x 140*	25	507	V5 507 021
32 x 178*	25	507	V5 507 041
38 x 140	25	507	V5 507 061
38 x 178	25	507	V5 507 081
51 x 225*	10	507	V5 507 101

* Made to Order (Please refer to our Terms & Conditions).

WASTE GASKET – For use with 601, 602 and 604 Series sinks and 605 Series troughs

Size (inch)	Pack quantity	Product Part no.
1½	1	V4 000 01
2	1	V4 000 02



PLUG AND CHAIN ASSEMBLY

Size (mm)	Pack quantity	Catalogue number	Product Part no.
32	1	508	V5 508 501
38	1	508	V5 508 101
51	1	508	V5 508 201



OVERFLOW ASSEMBLY

Size (inch)	Pack quantity	Catalogue number	Product Part no.
9-22	1	509	V5 509 001

Note: The 504 waste is not included in the assembly and should be ordered separately. Size refers to length of tube.



SMALL CIRCULAR DRIP CUP

Size (mm)	Pack quantity	Catalogue number	Product Part no.
102 dia.	1	501	V5 501 001



LARGE CIRCULAR DRIP CUP

Size (mm)	Pack quantity	Catalogue number	Product Part no.
168 dia.	1	500	V5 500 001



SMALL OVAL DRIP CUP

Size (mm)	Pack quantity	Catalogue number	Product Part no.
175 x 102	1	497	V5 497 001



LARGE OVAL DRIP CUP

Size (mm)	Pack quantity	Catalogue number	Product Part no.
264 x 111	1	499B	V5 499 001



LARGE OVAL DRIP CUP

Size (mm)	Pack quantity	Catalogue number	Product Part no.
305 x 152	1	499T	V5 490 001

Please note: Catalogue numbers are for additional reference only, please use product part no. to order.

Vulcathene

Pipe, bench products and ancillaries



SINK

Size (mm)	Pack qty	Catalogue number	Product Part no.
492 x 241 x 171	1	601	V4 601 00
552 x 400 x 231	1	602	V4 602 00



RUNNING TROUGH – Fabricated (polypropylene)

Size (mm)	Pack quantity	Catalogue number	Product Part no.
*	n/a	603	-

* Made to Order (Please refer to our Terms & Conditions).



ADJUSTABLE DILUTION RECOVERY TRAP – Anti-siphon, 2.3 litres capacity

Size (mm)	Pack quantity	Catalogue number	Product Part no.
38	1	W681	V1 068 101



ADJUSTABLE DILUTION RECOVERY TRAP – Anti-siphon, with visual glass base, 2.3 litres capacity

Size (mm)	Pack quantity	Catalogue number	Product Part no.
38	1	W691	V10 691 01



DILUTION RECOVERY TRAP – 4.5 litres capacity

Pack quantity	Catalogue number	Product Part no.
1	W612	V10 612 01



DILUTION RECOVERY TRAP/ DEMOUNTABLE LID* – With visual glass base, 4.5 litres capacity

Pack quantity	Catalogue number	Product Part no.
1	W910G	V10 910 001

*Inlets, glass dip tubes, blanking off plugs to be ordered separately. Note: The Vulcathene 910G Dilution Recovery Trap has been re-designed and now incorporates a removable lid for easier access and maintenance.



ADJUSTABLE ANTI-SIPHON BOTTLE TRAP

Size (mm)	Pack quantity	Catalogue number	Product Part no.
38	1	W561	V10 561 01



ADJUSTABLE ANTI-SIPHON BOTTLE TRAP – with visual glass base

Size (mm)	Pack quantity	Catalogue number	Product Part no.
38	1	W571	V10 571 01



ANTI-SIPHON UNIT

Size (mm)	Pack quantity	Catalogue number	Product Part no.
51	1	W50	V467020



CLAY TRAP

Pack quantity	Catalogue number	Product Part no.
1	W915	V10 915 01



FLOOR GULLY* – 4.5 litre trapped floor gully, 76mm plain ended outlet, 76mm trap seal

Size (litre)	Pack quantity	Product Part no.
4.5**	1	V18 101 00

*Floor gullies are fabricated to order; gullies with additional inlets can also be supplied.
** Made to Order (Please refer to our Terms & Conditions).



PIPE CLIPS

Size (mm)	Pack quantity	Catalogue number	Product Part no.
38	10	PC91	V5 091 101
51	10	PC91	V5 091 201
76	10	PC91	V5 091 301
102	2	PC91	V5 091 401

Please note: Catalogue numbers are for additional reference only, please use product part no. to order.

Vulcathene

Pipe, bench products and ancillaries



CLAMP SADDLE

Size (mm x BSP)	Pack quantity	Catalogue number	Product Part no.
102 x 2"	1	W465	V465050
102 x 1½"	1	W465	V465060
76 x 2"	1	W465	V465070
76 x 1½"	1	W465	V465080



AIR ADMITTANCE VALVE

Size (mm)	Pack quantity	Catalogue number	Product Part no.
102	1	W450	V466040



UNICOLLAR FIRE PROTECTION

Size (mm)	Pack quantity	Product Part no.
2250 strip length	1	V468100



FLEXIBLE CONNECTOR – 38mm

Size (m)	Pack quantity	Catalogue number	Product Part no.
1	1	W916	V5 916 001
1.5	1	W916	V5 916 015
2	1	W916	V5 916 002
3	1	W916	V5 916 003



GALVANISED SUPPORT CHANNEL – Supplied in standard lengths of 2.5m

Size (mm)	Pack quantity	Product Part no.
38	1	V4 650 10
51	1	V4 650 20
76	1	V4 650 30
102	1	V4 650 40



VERTICAL INLET – for 910G

Size (mm)	Pack quantity	Catalogue number	Product Part no.
38	1	W651	V10 651 01
51	1	W652	V10 652 01



HORIZONTAL INLET – for 910G

Size (mm)	Pack quantity	Catalogue number	Product Part no.
38	1	W641	V10 641 01
51	1	W642	V10 642 01



GLASS DIP TUBE – for 910G

Pack quantity	Product Part no.
1	V5 913 001



BLANKING OFF PLUG – for 910G

Pack quantity	Product Part no.
1	V5 912 001



VULCATHENE LUBRICANT

Size (g)	Pack quantity	Product Part no.
200	12	V5 900 002

Please note: Catalogue numbers are for additional reference only, please use product part no. to order.



ADDITIONAL DIP TUBE – for W612

Pack quantity	Product Part no.
1*	V10 912 01

* Made to Order (Please refer to our Terms & Conditions).



FLEXIBLE DRAIN COUPLING

Size (mm)	Pack qty	Cat. number	Product Part no.
DC95 80-95	1	DC95	V10 ODC95
DC115 100-115	1	DC115	V10 DC115



FLEXIBLE ADAPTOR COUPLING

Size (mm)	Pack qty	Cat. no.	Product Part no.
AC1221 110-122/80-95	1	AC1221	V1 AC1221
AC1361 121-136/80-95	1	AC1361	V1 AC1361
AC5144 110-125/100-115	1	AC5144	V1 AC5144
AC1362 121-136/100-115	1	AC1362	V1 AC1362

Vulcathene

Mechanical fittings

Please note: Catalogue numbers are for additional reference only, please use product part no. to order.



92½° SWEEP BEND

Size (mm)	Pack quantity	Catalogue number	Product Part no.
38	10	W181	V10 181 01
51	5	W182	V10 182 01
76	1	W183	V10 183 01
102	1	W184	V10 184 01



92½° LOOSE NUT SWEEP BEND

Size (mm)	Pack quantity	Catalogue number	Product Part no.
38	10	W291	V10 291 01
51	10	W292	V10 292 01
76	1	W293	V10 293 01
102	1	W294	V10 294 01



135° SLOW BEND

Size (mm)	Pack quantity	Catalogue number	Product Part no.
38	10	W191	V10 191 01
51	5	W192	V10 192 01
76	1	W193	V10 193 01
102	1	W194	V10 194 01



135° LOOSE NUT SLOW BEND

Size (mm)	Pack quantity	Catalogue number	Product Part no.
38	10	W211	V10 211 01
51	5	W212	V10 212 01
76	1	W213	V10 213 01
102	1	W214	V10 214 01



92½° EQUAL SWEEP TEE*

Size (mm)	Pack quantity	Catalogue number	Product Part no.
38	5	W201	V10 201 01
51	5	W202	V10 202 01
76	1	W203	V10 203 01
102	1	W204	V10 204 01

*Note: Apart from the 51mm x 38mm fitting which is produced as a one piece moulding, all other reducing sweep tees are made up with a W20 'Series' equal sweep tee with the addition of a W39 'Series' reducing coupler which should be ordered as a separate item.



92½° REDUCING SWEEP TEE

Size (mm)	Pack quantity	Catalogue number	Product Part no.
51 x 38	5	W2021	V10 202 11



45° SINGLE WYES

Size (mm)	Pack quantity	Catalogue number	Product Part no.
38	10	W371	V10 371 01
51	5	W372	V10 372 01
76	1	W373	V10 373 01
102	1	W374	V10 374 01



45° DOUBLE WYES

Size (mm)	Pack quantity	Catalogue number	Product Part no.
38	5	W381	V10 381 01
51	1	W382	V10 382 01
76	1	W383	V10 383 01
102	1	W384	V10 384 01



90° CORNER BRANCH*

Size (mm)	Pack quantity	Catalogue number	Product Part no.
102 x 51	1	W942	V10 942 01

*Fabricated.



TUBULAR TRAP – U-BENDS

Size (mm)	Pack quantity	Catalogue number	Product Part no.
38	5	W701	V10 701 01
51	1	W702	V10 702 01

Tubular traps should be assembled from stock components using a W70 'Series' 'U' bend and additional items as indicated in technical catalogue such as P traps, S traps and running traps



LINE COUPLERS

Size (mm)	Pack quantity	Catalogue number	Product Part no.
38	10	W161	V10 161 01
51	10	W162	V10 162 01
76	1	W163	V10 163 01
102	1	W164	V10 164 01



REDUCING COUPLERS

Size (mm)	Pack quantity	Catalogue number	Product Part no.
51 x 38	10	W3921	V10 39 211
76 x 38	10	W3931	V10 39 311
76 x 51	10	W3932	V10 39 321
102 x 38	1	W3941	V10 39 411
102 x 51	1	W3942	V10 39 421
102 x 76	1	W3943	V10 39 431

Vulcathene

Mechanical fittings



M.I. TO PIPE COUPLER

Size (mm)	Pack quantity	Catalogue number	Product Part no.
38	10	W141	V10 141 01
51	10	W142	V10 142 01



F.I. TO PIPE COUPLER

Size (mm)	Pack quantity	Catalogue number	Product Part no.
38	10	W151	V10 151 01
51	10	W152	V10 152 01



1 1/4" F.I. X 1 1/2" M.I. REDUCER

Size (mm)	Pack quantity	Catalogue number	Product Part no.
1 1/4" x 1 1/2"	25	W121	V10 121 01



1 3/4" X 38mm F.I TO PIPE COUPLER

Size (mm)	Pack quantity	Catalogue number	Product Part no.
1 3/4"	10	W2710	V10 271 01



GLASS ADAPTOR

Size (mm)	Pack quantity	Catalogue number	Product Part no.
38	1	W451	V10 451 04
51	1	W452	V10 452 04
76	1	W453	V10 453 04
102	1	W454	V10 454 04



ACCESS PIPE

Size (mm)	Pack quantity	Catalogue number	Product Part no.
51	1	W902	V10 902 01
76	1	W903	V10 903 01
102	1	W904	V10 904 01



HORIZONTAL/VERTICAL THERMAL STRESS RELIEF UNIT

Size (mm)	Pack quantity	Catalogue number	Product Part no.
38	1	W801	V10 111 01



HORIZONTAL/VERTICAL THERMAL STRESS RELIEF UNIT

Size (mm)	Pack quantity	Catalogue number	Product Part no.
51	1	W802	V54 522 01



HORIZONTAL/VERTICAL THERMAL STRESS RELIEF UNIT

Size (mm)	Pack quantity	Catalogue number	Product Part no.
76	1	W803	V10 803 01
102	1	W804	V10 804 01



FLANGE – BS Table 'D' supplied undrilled

Size (mm)	Pack quantity	Catalogue number	Product Part no.
38*	1	W101T.D	V10 101 01
51*	1	W102T.D	V10 102 01
76*	1	W103T.D	V10 103 01
102*	1	W104T.D	V10 104 01

* Made to Order (Please refer to our Terms & Conditions).



GASKET – BS Table 'D'

Size (mm)	Pack quantity	Product Part no.
38	1	V4 501 10
51	1	V4 501 20
76	1	V4 501 30
102	1	V4 501 40



NUT

Size (mm)	Pack quantity	Catalogue number	Product Part no.
38	50	W231	V10 231 01
51	50	W232	V10 232 01
76	25	W233	V10 233 01
102	25	W234	V10 234 01

Vulcathene

Mechanical fittings



NO HEAT OLIVE

Size (mm)	Pack quantity	Catalogue number	Product Part no.
38*	1	W221	V10 221 11
51*	1	W222	V10 222 11
76	25	W223	V10 223 11
102	25	W224	V10 224 11



BLANKING OFF PLUG

Size (mm)	Pack quantity	Catalogue number	Product Part no.
38	10	W241	V10 241 01
51	10	W242	V10 242 01
76	1	W243	V10 243 01
102	1	W244	V10 244 01



SPANNER

Size (mm)	Pack quantity	Catalogue number	Product Part no.
38	10	W361	V10 361 01
51	5	W362	V10 362 01
76	5	W363	V10 363 01
102	5	W364	V10 364 01



GROOVE CUTTING TOOL

Size (mm)	Pack quantity	Catalogue number	Product Part no.
38	1	W261	V10 261 01
51	1	W262	V10 262 01



GROOVE CUTTING TOOL

Size (mm)	Pack quantity	Catalogue number	Product Part no.
76	1	W263	V10 263 01
102	1	W264	V10 264 01



PIPE CUTTER

Description	Pack qty	Product Part no.
16-50mm pipe cutter	1	FT 80 00 01
50-125mm pipe cutter	1	FT 80 00 03
110-160mm pipe cutter	1	FT 80 00 09
16-63mm spare cutter wheel	1	FT 80 00 02
50-125mm spare cutter wheel	1	FT 80 00 04

Vulcathene

Polyfusion/mechanical adaptors



HALF COUPLER (POLYFUSION)

Size (mm)	Pack quantity	Catalogue number	Product Part no.
38	10	C130	V5 130 101



BSP COUPLER (POLYFUSION)

Size (mm)	Pack quantity	Catalogue number	Product Part no.
38	10	P758	V5 758 101



POLYFUSION WELDING TOOL

Size (mm)	Pack quantity	Product Part no.
38	1	V4 400 10

Vulcathene

Enfusion fittings



SINGLE SOCKET - Long sweep bend

Size (mm)	Pack quantity	Catalogue number	Product Part no.
38	10	L281	V60 281 01
51	10	L282	V60 282 01
76	1	L283	V60 283 01
102	1	L284	V60 284 01
152	1	L286	V60 286 01



SINGLE SOCKET - Short sweep bend

Size (mm)	Pack quantity	Catalogue number	Product Part no.
38	10	L291	V60 291 01
51	10	L292	V60 292 01



LOOSE NUT/SOCKET - Short sweep bend

Size (mm)	Pack quantity	Catalogue number	Product Part no.
38	10	L291A	V60 291 11



DOUBLE SOCKET - Long sweep bend

Size (mm)	Pack quantity	Catalogue number	Product Part no.
38	10	L171	V60 171 01
51	10	L172	V60 172 01
76	1	L173	V60 173 01
102	1	L174	V60 174 01
152	1	L176	V60 176 01



DOUBLE SOCKET - Short sweep bend

Size (mm)	Pack quantity	Catalogue number	Product Part no.
38	10	L181	V60 181 01
51	10	L182	V60 182 01



DOUBLE SOCKET - 45° slow bend

Size (mm)	Pack quantity	Catalogue number	Product Part no.
38	10	L191	V60 191 01
51	10	L192	V60 192 01
76	1	L193	V60 193 01
102	1	L194	V60 194 01
152	1	L196	V60 196 01



SINGLE SOCKET - 45° slow bend

L211/L212/L213/L214/L216

Size (mm)	Pack quantity	Catalogue number	Product Part no.
38	10	L211	V60 211 01
51	10	L212	V60 212 01
76	1	L213	V60 213 01
102	1	L214	V60 214 01
152	1	L216	V60 216 01



92½° EQUAL SWEEP TEE

Size (mm)	Pack quantity	Catalogue number	Product Part no.
38	5	L201	V60 201 01
51	5	L202	V60 202 01
76	1	L203	V60 203 01
102	1	L204	V60 204 01



92½° REDUCING SWEEP TEE*

Size (mm)	Pack quantity	Catalogue number	Product Part no.
51 x 38	5	L2021	V60 202 11
76 x 38	1	L2031	V60 203 11
76 x 51	1	L2032	V60 203 21
102 x 51	1	L2042	V60 204 21

*To make 102x76mm reducing tee use L204 equal tee with L3934 reducer.



45° SINGLE WYE

Size (mm)	Pack quantity	Catalogue number	Product Part no.
38	10	L371	V60 371 01
51	1	L372	V60 372 01
76	1	L373	V60 373 01
102	1	L374	V60 374 01
152	1	L376	V60 376 01



45° REDUCING WYE

Size (mm)	Pack quantity	Catalogue number	Product Part no.
51 x 38	1	L3721	V60 372 11
76 x 38	1	L3731	V60 373 11
76 x 51	1	L3732	V60 373 21
102 x 51	1	L3742	V60 374 21
102 x 76	1	L3743	V60 374 31
152 x 51	1	L3762	V60 376 21
152 x 76	1	L3763	V60 376 31
152 x 102	1	L3764	V60 376 41

Vulcathene

Enfusion fittings



92½° DOUBLE BRANCH

Size (mm)	Pack quantity	Catalogue number	Product Part no.
51	1	L352	V60 352 01
76	1	L353	V60 353 01
102	1	L354	V60 354 01



U-BEND

Size (mm)	Pack quantity	Catalogue number	Product Part no.
38*	1	L1011	V60 101 11
51*	1	L1012	V60 101 21

*P traps in 38mm & 51mm Size can be made by adding 1 x L28 series single socket bend to the U bend; P traps in 76mm, 102mm & 152mm Size can be made using 2 x L28 series single socket bends plus 1 x L17 series double socket.



SLIP COUPLER

Size (mm)	Pack quantity	Catalogue number	Product Part no.
102	1	L164(S)	V67 164 01
152	1	L166(S)	V64 166 01



LINE COUPLER

Size (mm)	Pack quantity	Catalogue number	Product Part no.
38	10	L161	V60 161 01
51	10	L162	V60 162 01
76	1	L163	V60 163 01
102	1	L164	V60 164 01
152	1	L166	V60 166 01



GLASS ADAPTOR

Size (mm)	Pack quantity	Catalogue number	Product Part no.
38*	1	L451	V60 451 04
51*	1	L452	V60 452 04
76*	1	L453	V60 453 04
102*	1	L454	V60 454 04

* Made to Order (Please refer to our Terms & Conditions).



M.I. TO PIPE COUPLER

Size (mm)	Pack quantity	Catalogue number	Product Part no.
38	10	L141	V60 141 01
51	10	L142	V60 142 01



REDUCING COUPLER*

Size (mm)	Pack quantity	Catalogue number	Product Part no.
51 x 38	25	L3912	V60 391 21
76 x 51	10	L3923	V60 392 31
102 x 51	5	L3924	V60 392 41
102 x 76	1	L3934	V60 393 41
152 x 102	1	L3946	V60 394 61

*76mm x 38mm reducer: Use L3923 reducer + L3912 reducer

102mm x 38mm reducer: Use L3924 reducer + L3912 reducer

152mm x 38mm reducer: Use L3946 reducer + L3924 reducer + L3912 reducer

152mm x 51mm reducer: Use L3946 reducer + L3924 reducer

152mm x 76mm reducer: Use L3946 reducer + L3934 reducer



F.I. TO PIPE COUPLER

Size (mm)	Pack quantity	Catalogue number	Product Part no.
76	1	L803	V10 803 01
102	1	L804	V10 804 01
152	1	L806	V60 806 01



HORIZONTAL/VERTICAL THERMAL STRESS RELIEF UNIT

Size (mm)	Pack quantity	Catalogue number	Product Part no.
38	1	L801	V60 801 01



HORIZONTAL/VERTICAL THERMAL STRESS RELIEF UNIT

Size (mm)	Pack quantity	Catalogue number	Product Part no.
51	1	L802	V60 802 01



HORIZONTAL/VERTICAL THERMAL STRESS RELIEF UNIT

Size (mm)	Pack quantity	Catalogue number	Product Part no.
76	1	L803	V10 803 01
102	1	L804	V10 804 01
152	1	L806	V60 806 01

*Now supplied spigot ended.

Vulcathene

Enfusion fittings



FLANGE

Size (mm)	Pack quantity	Catalogue number	Product Part no.
UNDRILLED			
38	1	L361	V60 401 01
51	1	L362	V60 402 01
76	1	L363	V60 403 01
102	1	L364	V60 404 01
152	1	L366	V60 406 01



CLEANOUT PLUG*

Size (mm)	Pack quantity	Catalogue number	Product Part no.
38	5	L241	V60 241 01
51	5	L242	V60 242 01
76	1	L243	V60 243 01
102	1	L244	V60 244 01

*Note: for 152mm cleanout use L3946 reducer with L244 cleanout plug.



ENFUSION 'HAND HELD' ELECTROFUSION UNIT

Pack quantity	Catalogue number	Product Part no.
1	L2601	V6ECU001



CLAMP

Size (mm)	Pack quantity	Catalogue number	Product Part no.
38	1	L261	V62 610 14
51	1	L262	V62 610 24
76	1	L263	V62 610 34
102	1	L264	V62 610 44
152	1	L265	V62 610 64



LINK CABLE

Pack quantity	Catalogue number	Product Part no.
1	L2610	C53EN003



PIPE SCRAPER

Size (mm)	Pack quantity	Product Part no.
Pipe scraper	-	C53MJ001
Replacement blades	2 per pack	C53MJ002

TERMINAL PIN ADAPTOR

Pack quantity	Product Part no.
10	C3370890

*Terminal pin adaptors allow easier access to fitting terminal pins where access is restricted.

Please note: Catalogue numbers are for additional reference only, please use product part no. to order.



Enhance your knowledge with our e-learning platform

Become an expert

Learn about our solutions, their key features, benefits and applications, you can also brush up on the latest installation advice from our experts.

Featuring courses on:

- Multikwik plumbing solutions
- Marley soil and waste systems
- Above and below ground drainage
- Vulcathene chemical drainage

To register for free visit:
alixisacademy.co.uk



Aliaxis UK reserves the right to modify the details in this publication as products and specifications are updated and improved.

The content of this publication is for general information only and it is user's responsibility to determine the suitability of any product for the purpose intended.

Aliaxis UK Limited, registered in England 01698059. Registered office:
Dickley Lane, Lenham, Maidstone, Kent, ME17 2DE

Aliaxis.co.uk

Distributor:

Version: V22023

